

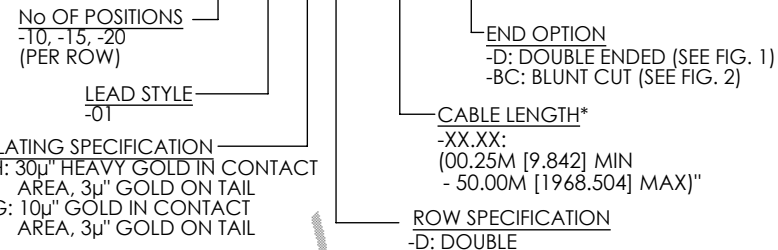
NOTES:

1. REPRESENTS A CRITICAL DIMENSION.
2. SAMTEC LOGO TO APPEAR ON SURFACE AS SHOWN, APPROXIMATELY 4.83[.190] x 17.78[.700], RECESSED 0.25[.010].
3. MOLDED SURFACES SHALL HAVE MATTE FINISH, SURFACES TO BE FREE OF SCRATCHES, NICKS, SINK AREAS, VOIDS, OR OTHER BLEMISHES.
4. MOLD TO BE INSERTED TO ACCEPT DIFFERENT CABLE DIAMETERS.
5. ALL EJECTOR PIN AND GATE LOCATIONS MUST BE APPROVED BY SAMTEC PRODUCT ENGINEERING.
6. ANY ADDITIONAL VOIDING AND/OR MODIFICATIONS TO VOIDING MUST BE APPROVED BY SAMTEC PRODUCT ENGINEERING.
7. ALL DRAFT MUST BE WITHIN THE SPECIFIED TOLERANCES.
8. ALL INSIDE/OUTSIDE RADII 0.13[.005] MAX UNLESS OTHERWISE STATED.
9. FOR ALL LENGTHS, TOLERANCE SHALL BE ±2%.
10. ASSEMBLY TO BE 100% HI-POT TESTED AT 300V FOR OPENS AND SHORTS. TEST TO BE DONE AFTER IN-PROCESS 2 AND IN-PROCESS 4.
11. MINIMUM LATCH PUSHOUT FORCE: 2.2N[.50LB]
12. ASSEMBLY TO BE BULK PACKAGED WITH ASBBLT4X5.5 ON EACH END PER PACKAGING STANDARD CO-RF-WI-3001-M.
13. DELETED
14. DELETED
15. REFER TO CRIMP SPECIFICATION PRINT FOR CRIMP AND STRIP DIMENSIONS, TOLERANCES, AND TOOLING.
16. CONTACT MUST BE INSERTED UNTIL RETENTION FEATURE LOCKS INTO PLACE, TO BE VIEWED FROM THE FRONT CORE.
17. CONTACT MUST FULLY BE INSIDE OF THE RC5B-XX-D & RC5-XX-D BODY.
18. REFER TO MD-XXX-XX-XXXX-XX FOR SAMTEC MATERIAL PART NUMBER

DO NOT SCALE FROM THIS PRINT

DESIGNED & DIMENSIONED IN MILLIMETERS [INCHES]

RC5-XX-XX-X-X-XX.XX-XX



*NOTE: -02.00, -03.00, AND -05.00 ARE CATALOG STANDARD LENGTHS. FOR OTHER LENGTHS CONTACT SAMTEC.

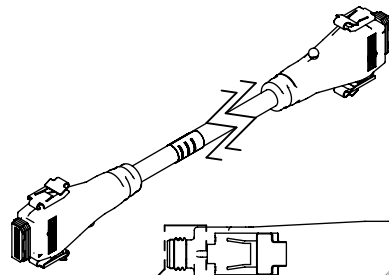
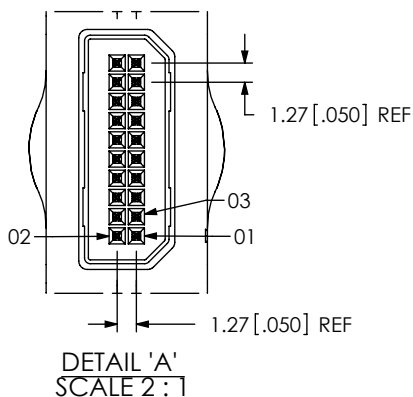
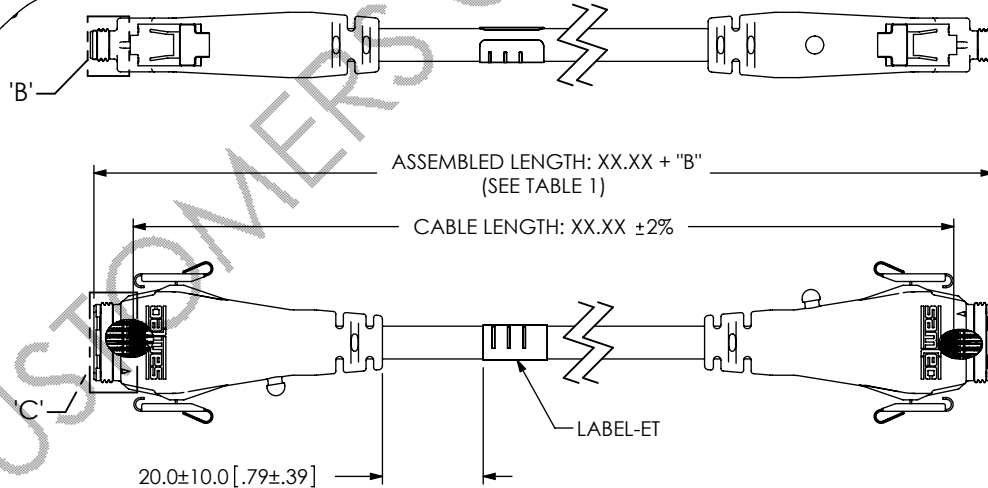


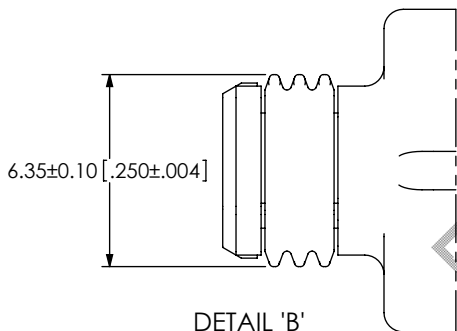
FIG 1 RC5-10-XX-X-D-XX-XX-D SHOWN



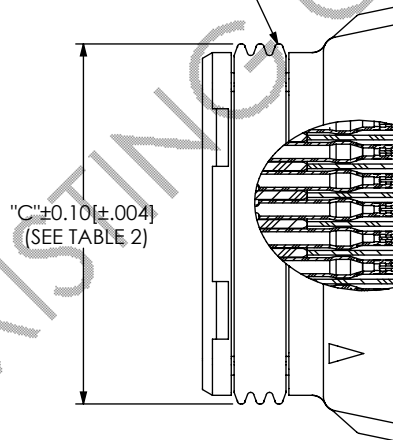
DETAIL 'A' SCALE 2:1

No. OF POS.	"C"
-10	15.88 [.625]
-15	22.23 [.875]
-20	28.58 [1.125]

OR-103-XX



DETAIL 'B' SCALE 4:1



DETAIL 'C' SCALE 3:1

PART NUMBER	CABLE	END 1	END 2	"B"
RC5-XX-XX-X-D-XX-XX-D	BWC-05-XX-01	C-203-2830-X	C-203-2830-X	14.12 [.556]
RC5-XX-XX-X-D-XX-XX-BC	BWC-05-XX-01	C-203-2830-X	NA	7.06 [.278]

UNLESS OTHERWISE SPECIFIED, DIMENSIONS ARE IN MILLIMETERS. TOLERANCES ARE:
 DECIMALS ANGLES 2°
 X.X: ±0.3 [.01]
 X.XX: ±0.13 [.005]
 X.XXX: ±0.051 [.0020]

PROPRIETARY NOTE
 THIS DOCUMENT CONTAINS INFORMATION CONFIDENTIAL AND PROPRIETARY TO SAMTEC, INC. AND SHALL NOT BE REPRODUCED OR TRANSFERRED TO OTHER DOCUMENTS OR DISCLOSED TO OTHERS OR USED FOR ANY PURPOSE OTHER THAN THAT WHICH IT WAS OBTAINED WITHOUT THE EXPRESSED WRITTEN CONSENT OF SAMTEC, INC.

MATERIAL: DO NOT SCALE DRAWING SHEET SCALE: 1:1.5
 INSULATOR: LCP, COLOR: BLACK
 CABLE: PVC JACKET/COPPER CONDUCTORS
 O-RING: NBR
 CONTACT: PHOS BRONZE MAX FLASH ALLOWED: .05[.002]
 PREMOLD: RITEFLEX 640-RD30565P62-BLACK MAX GATE VESTIGE: .05[.002]
 OVERMOLD: ZYTEL PA70G13L 52-91908BKS; MAX REGRIND: 10%
 LATCH: BeCu

520 PARK EAST BLVD, NEW ALBANY, IN 47150
 PHONE: 812-944-6733 FAX: 812-948-5047
 e-Mail: info@SAMTEC.com code 55322

DESCRIPTION:
 RECTANGULAR ACCLIMATE

DWG. NO.
RC5-XX-XX-X-X-XX.XX-XX

BY: B RAY 06/18/2008 SHEET 1 OF 3

-BC: BLUNT CUT
ADD LABEL-ET (BOTH ENDS)
(BUILD DOUBLE-ENDED INITIALLY FOR E-TEST)

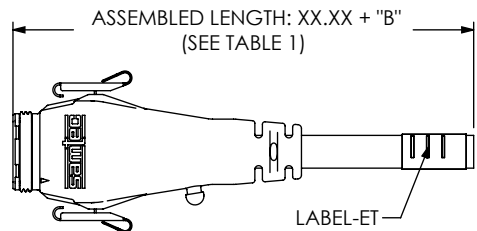
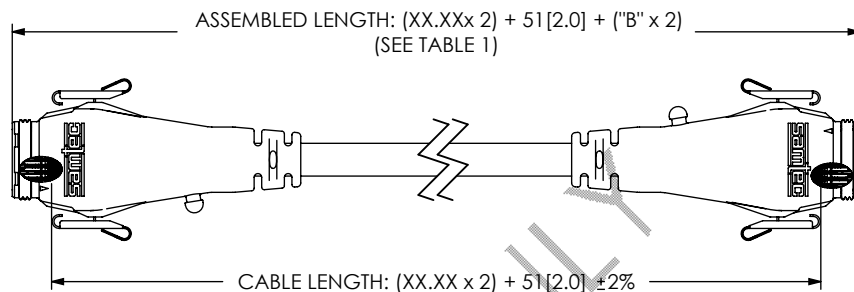
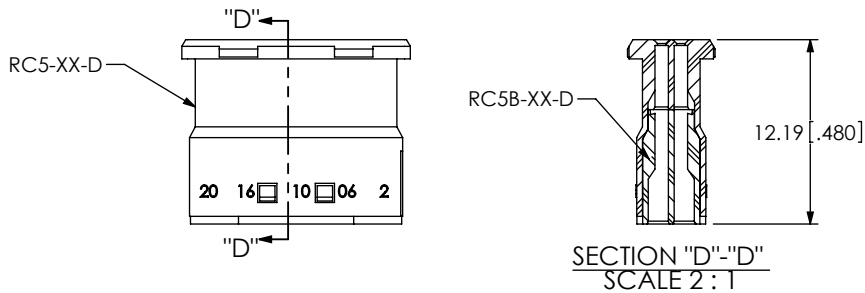


FIG 2
RC5-10-XX-X-D-XX.XX-BC SHOWN
(SAME AS FIG. 1, EXCEPT AS SHOWN)

-BC: BLUNT CUT
IN-PROCESS 5



IN-PROCESS 1
ADD RC5B-XX-D TO RC5-XX-D



IN-PROCESS 2
STRIP, CRIMP & ADD RC5-XX-D

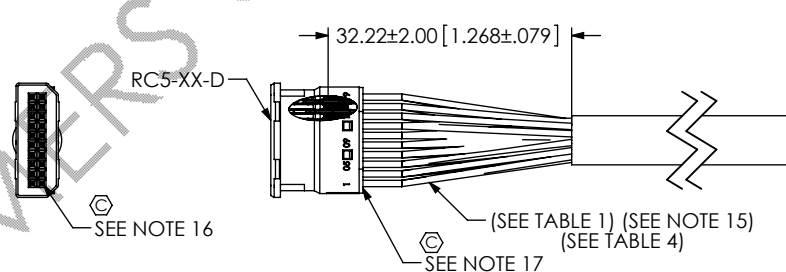


TABLE 4 (BWC-05-XX-01)

END 1 POS	WIRE COLOR	END 2 POS	END 1 POS	WIRE COLOR	END 2 POS
1	BLACK	1	21	ORANGE/BLACK STRIPE	21
2	BROWN	2	22	YELLOW/BLACK STRIPE	22
3	RED	3	23	GREEN/BLACK STRIPE	23
4	ORANGE	4	24	GRAY/BLACK STRIPE	24
5	YELLOW	5	25	PINK/BLACK STRIPE	25
6	GREEN	6	26	PINK/RED STRIPE	26
7	BLUE	7	27	PINK/BLUE STRIPE	27
8	PURPLE	8	28	PINK/GREEN STRIPE	28
9	GREY	9	29	LIGHT BLUE	29
10	WHITE	10	30	LIGHT BLUE/BLACK STRIPE	30
11	PINK	11	31	LIGHT BLUE/RED STRIPE	31
12	LIGHT GREEN	12	32	LIGHT BLUE/BLUE STRIPE	32
13	BLACK/WHITE STRIPE	13	33	LIGHT BLUE/GREEN STRIPE	33
14	BROWN/WHITE STRIPE	14	34	GRAY/RED STRIPE	34
15	RED/WHITE STRIPE	15	35	GRAY/GREEN STRIPE	35
16	ORANGE/WHITE STRIPE	16	36	PURPLE/BLACK	36
17	GREEN/WHITE STRIPE	17	37	BLUE/BLACK	37
18	BLUE/WHITE STRIPE	18	38	LIGHT GREEN/BLACK	38
19	PURPLE/WHITE STRIPE	19	39	LIGHT GREEN/RED	39
20	RED/BLACK STRIPE	20	40	LIGHT GREEN/BLUE	40

PROPRIETARY NOTE
THIS DOCUMENT CONTAINS INFORMATION
CONFIDENTIAL AND PROPRIETARY TO
SAMTEC, INC. AND SHALL NOT BE REPRODUCED
OR TRANSFERRED TO OTHER DOCUMENTS OR
DISCLOSED TO OTHERS OR USED FOR ANY
PURPOSE OTHER THAN THAT WHICH IT WAS
OBTAINED WITHOUT THE EXPRESSED WRITTEN
CONSENT OF SAMTEC, INC.

DO NOT SCALE DRAWING

SHEET SCALE: 1:1



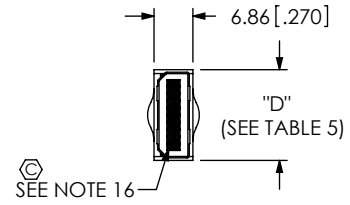
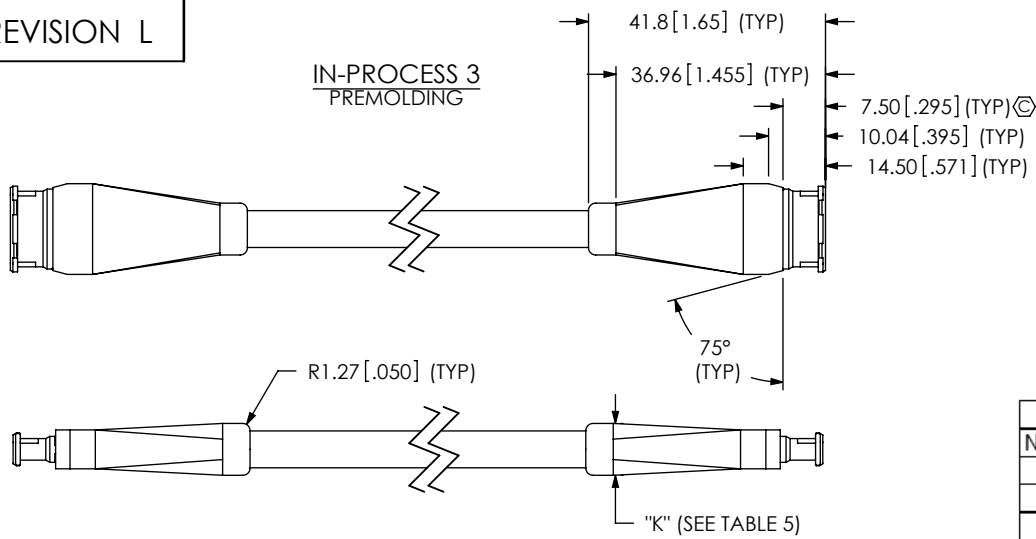
520 PARK EAST BLVD, NEW ALBANY, IN 47150
PHONE: 812-944-6733 FAX: 812-948-5047
e-Mail info@SAMTEC.com code 55322

DESCRIPTION:
RECTANGULAR ACCLIMATE

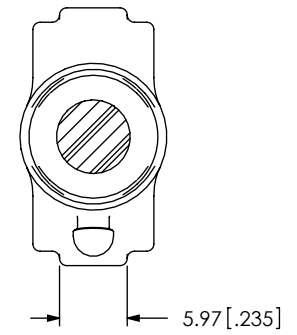
DWG. NO.
RC5-XX-XX-X-X-XX.XX-XX

BY: B RAY 06/18/2008 SHEET 2 OF 3

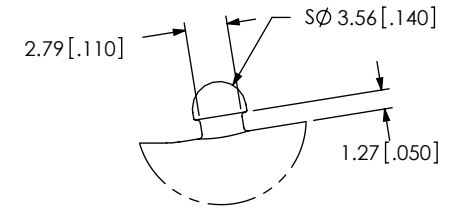
IN-PROCESS 3
PREMOLDING



No. OF POS	"D"	"K"
-10	16.00 [.630]	9.14 [.360]
-15	22.35 [.880]	10.16 [.400]
-20	28.70 [1.130]	10.87 [.420]

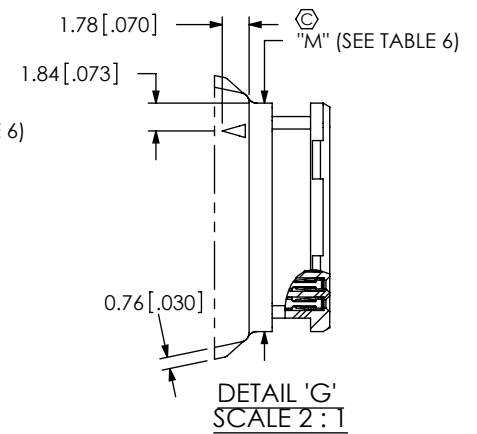
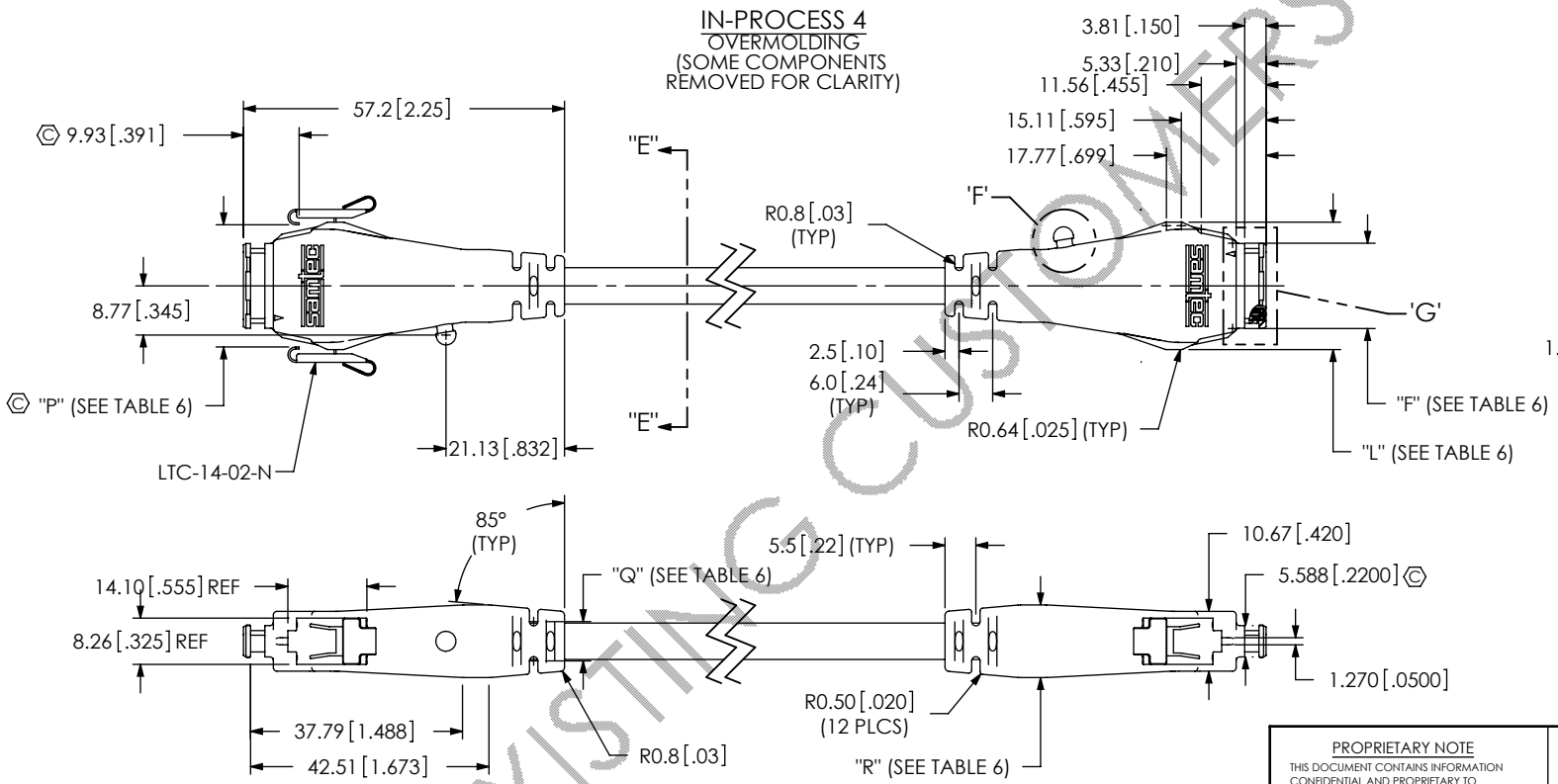


SECTION "E"-"E"
SCALE 1.5 : 1
(SOME COMPONENTS
REMOVED FOR CLARITY)



DETAIL 'F'
SCALE 2 : 1

IN-PROCESS 4
OVERMOLDING
(SOME COMPONENTS
REMOVED FOR CLARITY)



DETAIL 'G'
SCALE 2 : 1

No. OF POS	"F"	"L"	"M"	"P"	"Q"	"R"
-10	15.23 [.600]	22.73 [.895]	15.11 [.595]	21.8 [.86]	7.0 [.28]	12.95 [.510]
-15	21.58 [.850]	29.08 [1.145]	21.46 [.845]	28.2 [1.11]	8.0 [.31]	13.97 [.550]
-20	27.93 [1.100]	35.35 [1.392]	27.81 [1.095]	34.5 [1.36]	8.5 [.33]	14.48 [.570]

PROPRIETARY NOTE
THIS DOCUMENT CONTAINS INFORMATION
CONFIDENTIAL AND PROPRIETARY TO
SAMTEC, INC. AND SHALL NOT BE REPRODUCED
OR TRANSFERRED TO OTHER DOCUMENTS OR
DISCLOSED TO OTHERS OR USED FOR ANY
PURPOSE OTHER THAN THAT WHICH IT WAS
OBTAINED WITHOUT THE EXPRESSED WRITTEN
CONSENT OF SAMTEC, INC.

DO NOT SCALE DRAWING
SHEET SCALE: 0.75:1



520 PARK EAST BLVD, NEW ALBANY, IN 47150
PHONE: 812-944-6733 FAX: 812-948-5047
e-Mail: info@SAMTEC.com code 55322

DESCRIPTION:	RECTANGULAR ACCLIMATE
DWG. NO.	RC5-XX-XX-X-X-XX.XX-XX
BY: B RAY	06/18/2008 SHEET 3 OF 3

X-ON Electronics

Largest Supplier of Electrical and Electronic Components

Click to view similar products for [Rectangular Cable Assemblies](#) category:

Click to view products by [Samtec](#) manufacturer:

Other Similar products are found below :

[MC320E-N-23](#) [A08KR08KR26E203B](#) [G125FC10668L0-0300L](#) [G125FC10668L0-0150L](#) [G125-FC11068L0-0150L](#) [G125-FC11068L0-0300L](#)
[A06XAF06XAF22K254B](#) [A10XAF10XAF22K152B](#) [A13KR13KR26E254B](#) [A12SUR12SUR32W203A](#) [A16KR16KR26E203B](#)
[A12KR12KR26E305A](#) [A12KR12KR26E305B](#) [A12ZR12ZR28H203B](#) [A12ZR12ZR28H203A](#) [A10SR10SR30K254A](#) [A09SR09SR30K305A](#)
[A14KR14KR26E254A](#) [A14KR14KR26E254B](#) [A10ZR10ZR28H254A](#) [A09ZR09ZR28H305A](#) [A09ZR09ZR28H305B](#) [A13ZR13ZR28H203A](#)
[A15KR15KR26E254A](#) [A13KR13KR26E305B](#) [A11ZR11ZR28H254A](#) [A11ZR11ZR28H254B](#) [A11SR11SR30K254A](#)
[A12SUR12SUR32W254A](#) [A10ZR10ZR28H305A](#) [A14KR14KR26E305B](#) [A10ZR10ZR28H305B](#) [A12ZR12ZR28H254A](#)
[A15KR15KR26E305A](#) [A15KR15KR26E305B](#) [A11SR11SR30K305A](#) [A11ZR11ZR28H305A](#) [A11ZR11ZR28H305B](#) [A13ZR13ZR28H254A](#)
[A12SUR12SUR32W305A](#) [A12ZR12ZR28H305A](#) [A12ZR12ZR28H305B](#) [A20XAF20XAF22K51B](#) [A13ZR13ZR28H305A](#)
[A20XAF20XAF22K102B](#) [A20XAF20XAF22K152B](#) [A20XAF20XAF22K203B](#) [A20XAF20XAF22K254B](#) [A20XAF20XAF22K305B](#)
[A16XSR16XSR36R254B](#)