

RCE-01-G-02.00-BC

RCE, RCEF SERIES

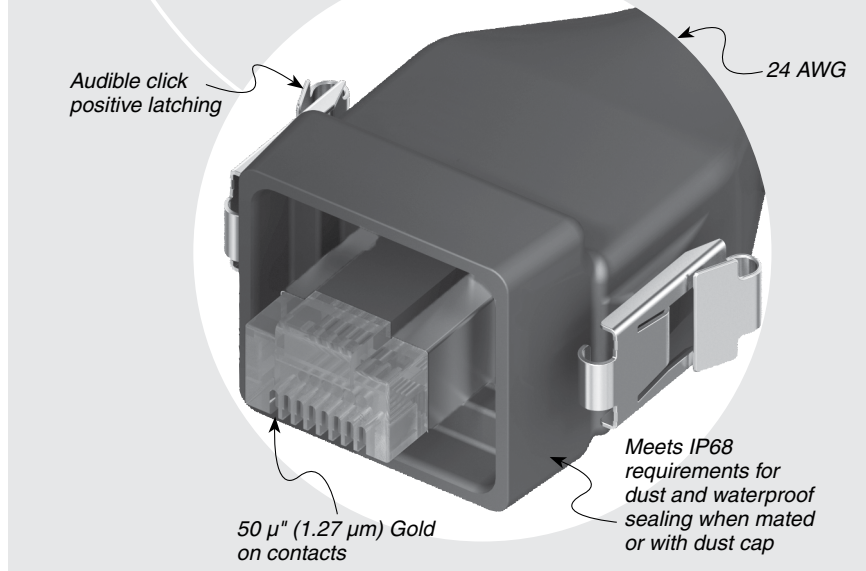
IP68 SEALED ETHERNET PLUG

SPECIFICATIONS

For complete specifications see www.samtec.com?RCE

- Insulator Material:** Black Liquid Crystal Polymer
- Contact:** Phosphor Bronze
- Operating Temp Range:** -40 °C to +75 °C
- Latch:** BeCu
- Wire:** 24 AWG

Mates with: RPBE-01, RPCE

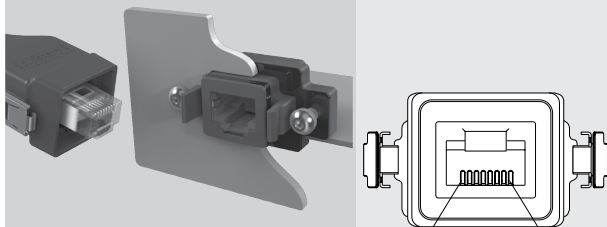


ALSO AVAILABLE
(MOQ Required)

- Other wire lengths

RCE	CABLE STYLE	PLATING	WIRE LENGTH	END OPTION
	-01 = Outdoor UL	-G = 50 μm (1.27 μm) Gold on contact	-02.00 = (2 m) 78.74" -03.00 = (3 m) 118.11" -05.00 = (5 m) 196.85" Standard lengths	-D = Double End (Both ends sealed) -BC = Blunt Cut (One end sealed)

APPLICATION



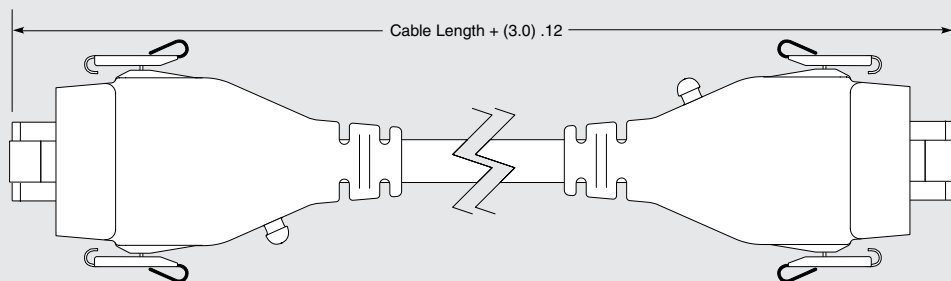
FIELD TERMINATION KIT

- Ethernet Field Termination Kit available for long cable run and small-opening applications so housings can be customer-installed after the runs are complete.
- RCEF-G-01 Series (For cable outside diameter range of 5.00-5.75 mm)
- RCEF-G-02 Series (For cable outside diameter range of 5.75-6.50 mm)

DUST CAPS

STYLE	RCE
-01	DCA-RCE-01-01

Note: Meets IP68 requirements for dust and waterproof sealing when mated or with dust cap.



X-ON Electronics

Largest Supplier of Electrical and Electronic Components

Click to view similar products for [Headers & Wire Housings](#) category:

Click to view products by [Samtec](#) manufacturer:

Other Similar products are found below :

[892-18-020-10-001101](#) [58102-G61-06LF](#) [582553-1](#) [0009485154](#) [009176003701906](#) [0050291907](#) [LY20-4P-DT1-P1E-BR](#) [02.125.8002.8](#)
[609-3404](#) [61062-3](#) [61082-181009](#) [622-3653LF](#) [63453-116](#) [636-1030](#) [636-1427](#) [636-3427](#) [636-4007](#) [641938-9](#) [641991-4](#) [644827-2](#) [65817-](#)
[010LF](#) [65817-015LF](#) [65863-015LF](#) [66207-023LF](#) [67095-007LF](#) [67601157](#) [68645-018](#) [68648-049](#) [70.362.1628.0](#) [70-4210](#) [70-4226B](#) [70-](#)
[4853B](#) [707-5020](#) [707-5028](#) [71.350.2428.0](#) [71918-208LF](#) [71961-016LF](#) [733-134](#) [733-162](#) [754199-000](#) [760-3052](#) [787-8014-00](#) [79531-3000](#)
[FCN-360C032-B](#) [FCN-367T-T012/H](#) [FCN-723D010/2](#) [80.063.4001.1](#) [800-90-001-10-001000](#) [800-90-010-10-002000](#) [801-43-002-10-013000](#)