

RCE-01-G-02.00-BC

**RCE, RCEF SERIES**

# IP68 SEALED ETHERNET PLUG

**SPECIFICATIONS**

For complete specifications see [www.samtec.com?RCE](http://www.samtec.com?RCE)

- Insulator Material:** Black Liquid Crystal Polymer
- Contact:** Phosphor Bronze
- Operating Temp Range:** -40 °C to +75 °C
- Latch:** BeCu
- Wire:** 24 AWG

Mates with: RPBE-01, RPCE

Audible click positive latching

24 AWG

50 μ" (1.27 μm) Gold on contacts

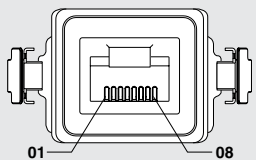
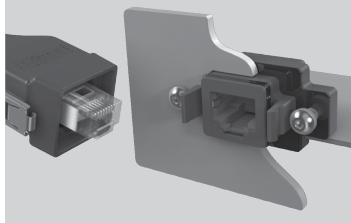
Meets IP68 requirements for dust and waterproof sealing when mated or with dust cap

**ALSO AVAILABLE**  
(MOQ Required)

- Other wire lengths

RCE	CABLE STYLE	PLATING	WIRE LENGTH	END OPTION
	-01 = Outdoor UL	-G = 50 μ" (1.27 μm) Gold on contact	-02.00 = (2 m) 78.74" -03.00 = (3 m) 118.11" -05.00 = (5 m) 196.85" Standard lengths	-D = Double End (Both ends sealed) -BC = Blunt Cut (One end sealed)

**APPLICATION**



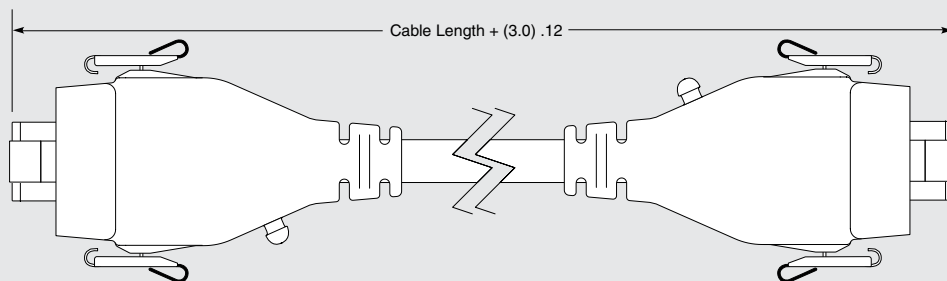
**FIELD TERMINATION KIT**

- Ethernet Field Termination Kit available for long cable run and small-opening applications so housings can be customer-installed after the runs are complete.
- RCEF-G-01 Series (For cable outside diameter range of 5.00-5.75 mm)
- RCEF-G-02 Series (For cable outside diameter range of 5.75-6.50 mm)

**DUST CAPS**

STYLE	RCE
-01	DCA-RCE-01-01

**Note:** Meets IP68 requirements for dust and waterproof sealing when mated or with dust cap.



## X-ON Electronics

Largest Supplier of Electrical and Electronic Components

*Click to view similar products for [Modular Connectors / Ethernet Connectors](#) category:*

*Click to view products by [Samtec](#) manufacturer:*

Other Similar products are found below :

[8949-H88/06BLKA/SN](#) [74441-0010/BKN](#) [MP1010RX-1000](#) [MP44RX-1000](#) [PHJ-4P4C-1-V-4](#) [PHP-6P6C-5](#) [GAX-3-66](#) [GAX-8-62](#) [GDCX-PA-66-50](#) [GDCX-PN-64](#) [GDCX-PN-66](#) [GDCX-PN-66-50](#) [GDLX-A-66](#) [GDLX-N-66](#) [GDLX-S-66](#) [GDLX-S-88K](#) [GDLX-SMT-S-88](#) [GDTX-S-88-50](#) [GDX-PA-1010](#) [GLX-N-1010M-BLK](#) [GLX-S-88M-BLK](#) [GMX-N-1010](#) [GMX-S-1010](#) [GMX-S-66](#) [GMX-SMT4-N-88](#) [GPX-2-64](#) [GSGX-N-2-88](#) [GSGX-N-4-88](#) [GSX-NS2-88-3.05](#) [GSX-NS2-88-3.05-50](#) [GSX-NS-88-3.05-50](#) [PT-108A-8C-UL](#) [PT-J951-8C](#) [PTS-J531-8CS-50UL](#) [1-1775629-2](#) [A-2014-0-4](#) [GWLX-S-88-GR](#) [GWLX-S9-88-YG](#) [DC-1021-8-WH-6](#) [1300530003](#) [1324640-4](#) [RJ11FTVC2G](#) [RJ11FTVC2N](#) [RJFTVX2SA1G](#) [132764-001](#) [1413235](#) [MP88X-1000](#) [MPS88RX-5000](#) [E5288-S000K3-L](#) [E5908-15A242-L](#)