



**RF047 SERIES**

# 50 Ω .047" DIA FLEXIBLE CABLE

**SPECIFICATIONS**

For complete specifications see [www.samtec.com?RF047](http://www.samtec.com?RF047)

**RF Connector:**

**Outer Contact Material:**

Brass (SMA),  
BeCu (HMHF1)

**Contact Material:**

Brass (SMA),  
BeCu (HMHF1)

**Insulator Material:**

PTFE

**Impedance:**

50 Ω

**Frequency Range:**

0-10 GHz (HMHF1)

0-20 GHz (SMA)

**Dielectric Withstanding:**

1,000 Vrms (SMA)

**CCA-047 (.047")**

**Cable:**

**Impedance:**

50 Ω microwave

**Capacitance:**

95.14 pF/meter

**Max Attenuation**

**(cable only):**

1.15 dB @ 1 GHz for 1 meter

**Conductor Size:**

28 AWG (0.29 mm) .011" dia.

**Conductor Material:**

Silver plated copper

**Insulator Material:**

FEP

**Shield Material:**

Metallic Alloy

**Jacket Material:**

FEP

**Jacket Diameter:**

(1.42 mm) .056" dia.

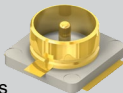
**Bend Radius:**

5 mm

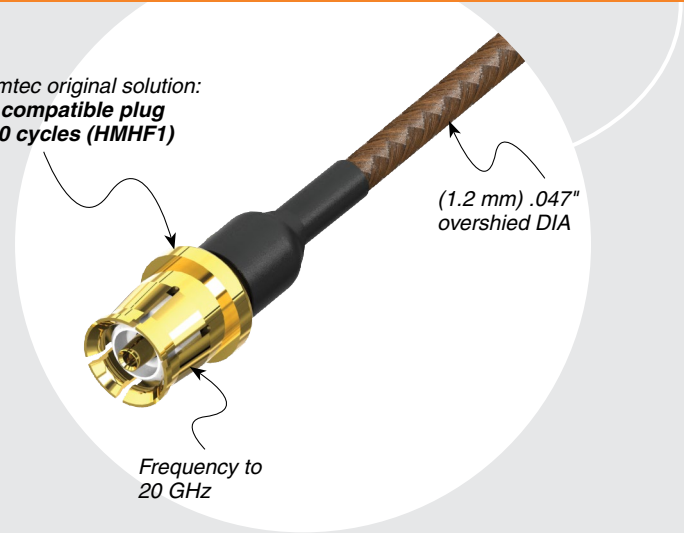
**Mates with:**  
SMA, RSP-122811-01

**MATING SOLUTION**

- Micro RF PCB connectors for Micro High Frequency RFs
- MHF1 end mates with RSP-122811-01 (Cycles: 30 max.)



A Samtec original solution:  
**U.FL compatible plug to 500 cycles (HMHF1)**



**CABLE TYPE**

**END 1 CONNECTOR**

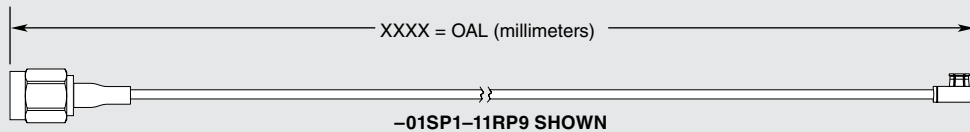
**END 2 CONNECTOR**

**OVERALL LENGTH**

**RF047**  
= (1.2 mm) .047"  
overshield DIA  
28 AWG Flexible coax cable

Specify END OPTIONS from chart

–“XXXX”  
= Overall Length  
in millimeters  
–0100 (100 mm) 3.94"  
minimum



**ALSO AVAILABLE**  
(MOQ Required)

- Additional stripping and tinning options

**OTHER SOLUTIONS**

- Cable connector kits (see cable components catalog pages)

**END OPTIONS**

<p>–01SP1 = SMA Straight Plug (30 μ" (0.76 μm) Gold on Center Contact, Gold Flash on Shell)</p>	
<p>–11SP9 = HMHF1 U.FL Straight Plug (30 μ" (0.76 μm) Gold on Center Contact, Gold Flash on Shell)</p>	
<p>–11RP9 = HMHF1 U.FL Right-angle Plug (30 μ" (0.76 μm) Gold on Center Contact, Gold Flash on Shell)</p>	
<p>–SING = Single Ended (End 2 Callout)</p>	
<p>–XXXXXX = Stripped &amp; Tinned (End 2 Callout)</p>	

**STRIPPED & TINNED**  
(Dimensions in mm)

CALLOUT	A	B	C
–303030	3.0	3.0	3.0
–303040	3.0	3.0	4.0
–403030	4.0	3.0	3.0
–403040	4.0	3.0	4.0
–404040	4.0	4.0	4.0

Both center conductor and braid shield are stripped, only the center conductor is tinned.

## X-ON Electronics

Largest Supplier of Electrical and Electronic Components

*Click to view similar products for [RF Cable Assemblies](#) category:*

*Click to view products by [Samtec](#) manufacturer:*

Other Similar products are found below :

[73-6352-10](#) [73-6353-3](#) [R285001001](#) [R288940004](#) [145111-05-12.00](#) [1661-C-24](#) [1801171170914KE](#) [24P104C24J1-012](#) [24P104C24P1-006](#)  
[24P104C24P1-018](#) [24P204C24J1-003](#) [172-2150-EX](#) [FCB-3030-ALT](#) [21117-046](#) [21117-050](#) [PCX-24-50](#) [24P103C24P2-003](#) [25P203C25P2-](#)  
[003](#) [R284008001](#) [R285001021](#) [R285426000](#) [R288940003](#) [4814-BB-24](#) [5260-72](#) [JT2N1-CL1-1F](#) [DLP-COAX1](#) [4814-K-48](#) [115101-09-06.00](#)  
[CCNTN2-MM-LL335-26](#) [73-6351-25](#) [73-6352-3](#) [73-6353-25](#) [1800920920610PJ](#) [GD0BQ0BQ024.0](#) [1-3636-600-5210](#) [TL8A-11SMA-](#)  
[11SMA-01500-51](#) [R284C0351060](#) [R288940009](#) [R284C0351028](#) [R288940002](#) [9702-1SL-1](#) [PT82NSMA](#) [73-6353-10](#) [R285020301W](#) [PCX-](#)  
[18-50](#) [Minibend-9](#) [Minibend-4](#) [BNC TO SMA Cable](#) [MIKROE-274](#) [Minibend-10](#)