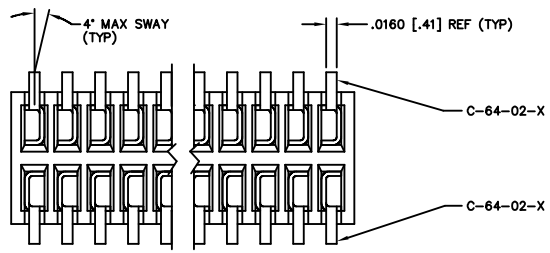
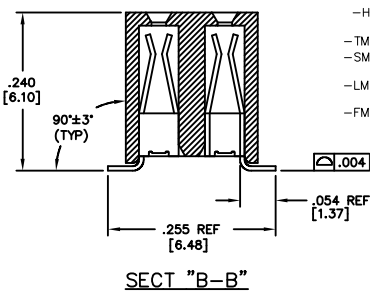
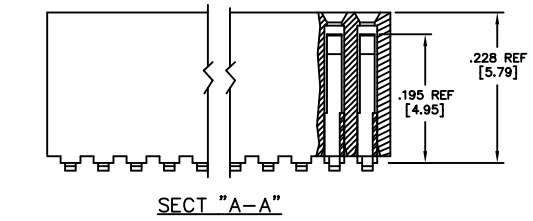
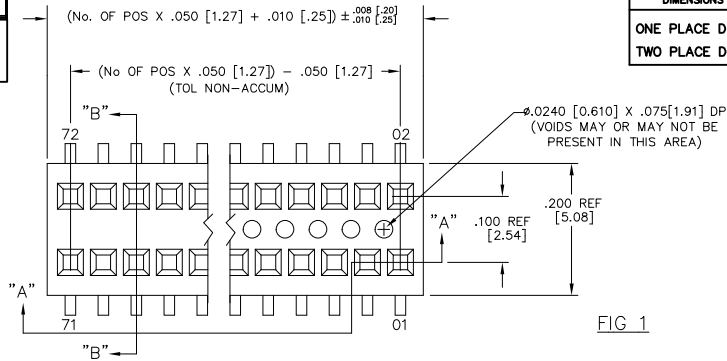


REVISION AW

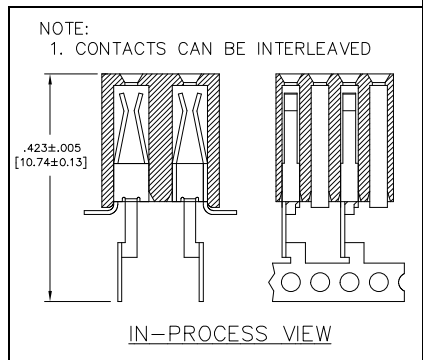
DO NOT SCALE FROM THIS PRINT

DIMENSIONS ARE IN INCHES UNLESS OTHERWISE NOTED		TOLERANCES ARE:	TITLE: RECEPTACLE SURFACE MOUNT (DOUBLE ROW)	DWG NO: RSM-1XX-XX-XXX-D-XX SHEET 1 OF 2
ONE PLACE DECIMALS: ± .1	THREE PLACE DECIMALS: ± .005	ANGLES ± 5°		
TWO PLACE DECIMALS: ± .01	FOUR PLACE DECIMALS: ± .0020			



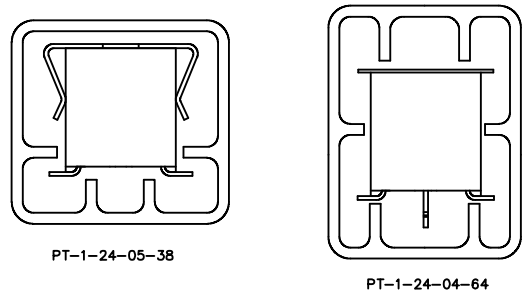
- RSM-1XX-XX-XXX-D-XX
- BODY LENGTH SPECIFICATION**
 - 02 THRU -40 POSITIONS
 - LEAD STYLE**
 - 02: C-64-02-X
 - PLATING SPECIFICATIONS**
 - S: 30μ" SELECTIVE GOLD IN CONTACT AREA MATTE TIN ON TAIL
 - F: 3μ" FLASH SELECTIVE GOLD IN CONTACT AREA MATTE TIN ON TAIL
 - L: 10μ" LIGHT SELECTIVE GOLD IN CONTACT AREA MATTE TIN ON TAIL
 - T: MATTE TIN CONTACT AND TAIL
 - STL: 30μ" SELECTIVE GOLD IN CONTACT AREA TIN/LEAD (90%/10 +/ -5%) TAIL
 - H: 30μ" HEAVY GOLD IN CONTACT AREA 3 ON TAIL
 - TM: MATTE TIN CONTACT AND TAIL
 - SM: 30μ" SELECTIVE GOLD IN CONTACT AREA MATTE TIN ON TAIL
 - LM: 10μ" LIGHT SELECTIVE GOLD IN CONTACT AREA MATTE TIN ON TAIL
 - FM: 3μ" FLASH SELECTIVE GOLD IN CONTACT AREA MATTE TIN ON TAIL
 - OPTIONS**
 - LC: LOCKING CLIP (USE LC-05-TM)(SEE FIG 2, SHT 2)(SEE NOTE 4)
 - P: PICK AND PLACE PAD (AVAILABLE ON POS. 5 THRU 40 ONLY) (USE LMP-02)(SEE FIG 3, SHT 2)
 - K: POLYAMIDE FILM PAD (AVAILABLE ON POS. 5 THRU 40 ONLY) (.005 [.13] THICKNESS WITH SILICONE ADHESIVE)(SEE FIG 4, SHT 2) (USE K-D0T-.246-.375-.005)
 - TR: TAPE & REEL
 - BODY SPECIFICATION**
 - D: DOUBLE ROW (USE RSM-XX-D)

CRITICAL DIMENSION INSPECTION TABLE	
ASSEMBLY OPERATION	IN-PROCESS INSPECTION
BREAK CARRIER	C1
ROTARY CUT	C2
ADD -P OPTION	C3



- WILL LOSE A POSITION FOR EVERY CUT MADE ON A SOCKET STRIP; CUT FLASH TO BE .010 [.25] MAX WITH NO FLASH ALLOWED IN HOLES OR EXTENDING BELOW LEADS.
- ⊕ REPRESENTS A CRITICAL DIMENSION.
- MINIMUM RETENTION FORCE: 1.0 LB.
- DUE TO THE HIGH AMOUNT OF INSERTION FORCE NEEDED, THE -LC OPTION IS NOT COMPATIBLE WITH AUTO PLACEMENT. SAMTEC RECOMMENDS MANUAL PLACEMENT FOR ALL ASSEMBLIES WITH THE -LC OPTION.
- INSULATOR MATERIAL: LCP, UL 94 V0

PACKAGING



- NOTES:
- 1st POSITION TO BE LOADED IN TUBE IN THE DIRECTION OF THE ARROW.
 - LAYER PACKAGE POSITIONS 2-4, TUBE PACKAGE POSITIONS 5-36
 - ENDWALLS TO BE .020±.003"

TABLE 1		
OPTION	TUBE	PLUG
-K, -LC, -K-LC	PT-1-24-04-64	TP-03
NONE, -P, -P-LC	PT-1-24-05-38	TP-09

PROPRIETARY NOTE
THIS DOCUMENT CONTAINS CONFIDENTIAL AND PROPRIETARY INFORMATION AND ALL DESIGN, MANUFACTURING, REPRODUCTION, USE, PATENT RIGHTS AND SALES RIGHTS ARE EXPRESSLY RESERVED BY SAMTEC, INC. THIS DOCUMENT SHALL NOT BE DISCLOSED, IN WHOLE OR PART, TO ANY UNAUTHORIZED PERSON OR ENTITY NOR REPRODUCED, TRANSMITTED OR INCORPORATED IN ANY OTHER PROJECT IN ANY MANNER WITHOUT THE EXPRESS WRITTEN CONSENT OF SAMTEC, INC.

EXISPROD\ASSEMBLY\050 RSM-DASM

samtec

520 PARK EAST BLVD. NEW ALBANY, INDIANA 47150
PHONE (812) 944-6733 P.O. BOX 1147
CODE 55322

MADE BY: GREG REIDINGER 11-24-92

RSM-1XX-XX-XXX-D-XX SHEET 1 OF 2

X-ON Electronics

Largest Supplier of Electrical and Electronic Components

Click to view similar products for [Board to Board & Mezzanine Connectors](#) category:

Click to view products by [Samtec](#) manufacturer:

Other Similar products are found below :

[589158040000018](#) [FCN-230C068-11](#) [FCN-268F012-G/BD](#) [FCN-268F036-G/BD](#) [FCN-268M012-G/0D](#) [FCN-268M024-G/1D](#) [FCN-723J004/1](#) [MIS-048-01-F-D-DP-K](#) [832-10-034-10-001000](#) [FX4C-80S-1.27DSA](#) [FCN-214Q030-G/0](#) [FCN-234P048-G/0](#) [FCN-235D050-G/C](#) [210-93-314-41-105000](#) [2-22603-0](#) [MDF7-40DP-2.54DSA\(55\)](#) [AXG720047](#) [5031084030](#) [MIT-114-03-F-D-K](#) [55323-1519](#) [DF33-2P-3.3DSA\(24\)](#) [YFT-20-05-H-03-SB-K](#) [503308-3040](#) [026-6203-PDB](#) [027-6203-PDB](#) [069159702701000](#) [10123981-102LF](#) [101A10019X](#) [55650-0588-C](#) [68684-306](#) [75140-7012](#) [589159005003045](#) [194261-1](#) [FCN-268F024-G0D](#) [10124054-515LF](#) [68685-603](#) [8-1616154-3](#) [MIS-019-01-F-D](#) [589159005002045](#) [541371078](#) [IL-WX-10PB-HF-B-E1000E](#) [FCN-268M024-G/3D](#) [20021832-06016C1LF](#) [KX15-20KLDL-E1000E](#) [MDF7-16DP-2.54DSA\(55\)](#) [AXE810124](#) [FCN-214J100-G/0](#) [FCN-230C068-E/S](#) [AXE812124](#) [AXE816124](#)