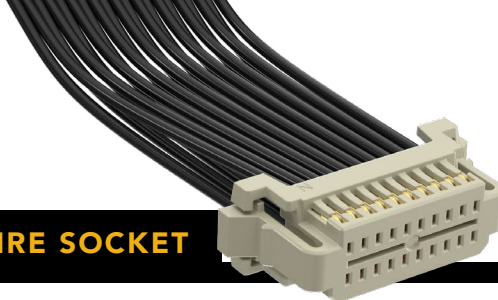


## (1.00 mm) .0394" PITCH • DOUBLE ROW DISCRETE WIRE SOCKET



SERIES	PINS PER ROW	WIRE GAUGE	PLATING OPTION	ASSEMBLED LENGTH	WIRING OPTION
<b>S1SD</b> = Double Row PVC Cable	<b>-02, -03 -04, -05, -10, -15, -20</b> (Standard sizes)	<b>-28</b> = 28 AWG  <b>-30</b> = 30 AWG	<b>-GF</b> = 3 μ" (0.07 μm) Gold on contact and tail	<b>-"XX.XX"</b> = Assembled Length in Inches (45.72 mm) 01.80" min.	Double Ended Assemblies  <b>-L1</b> = Pin 1 to Pin 1  <b>-L2</b> = Pin 1 to Pin 2  <b>-L3</b> = Pin 1 to Pin N  <b>-L4</b> = Pin 1 to Pin N-1  Single Ended Assembly  <b>-L</b> = Latching
<b>S1SDT</b> = Double Row Blue *Teflon® Cable					

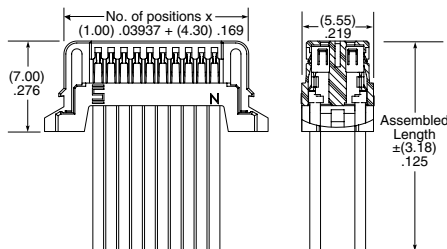
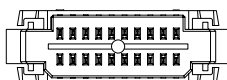
### S1SD(T)

Board Mates:

T1M

Cable Mates:

T1SD(T), T1PD(T)



### SPECIFICATIONS

**Insulator Material:**

Natural Nylon

**Contact Material:**

Phosphor Bronze

**Plating:**

Au over 50 μ" (1.27 μm) Ni

**Operating Temp Range (S1SD(T)/T1M):**

-10 °C to +85 °C (PVC)

-40 °C to +125 °C (Teflon®)

**Current Rating (28 AWG):**

2.3 A per pin

(2 pins powered)

**Voltage Rating:**

250 VAC/353 VDC

**Wire:**

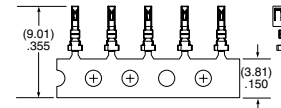
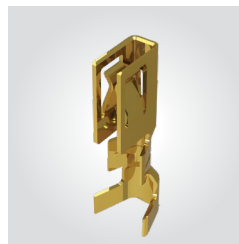
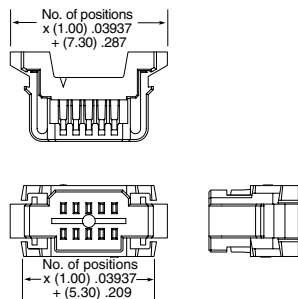
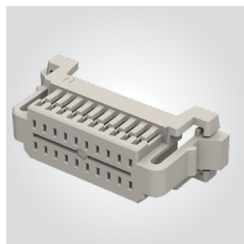
28 or 30 AWG

\*DuPont™ Teflon® is a registered trademark of the E.I. du Pont de Nemours and Company or its affiliates.

**Note:** Teflon® cable is intended for crimp only. Contact Samtec for solderable cable applications.

View complete specifications at: [samtec.com?S1SD](http://samtec.com?S1SD) & [samtec.com?S1SDT](http://samtec.com?S1SDT)

SERIES	NO. OF POSITIONS	SERIES	01	PLATING
<b>ISD1</b> = Double Row Body	<b>-02, -03, -05, -07, -10, -15, -20</b> (Per Row)	<b>CC09R</b> = Contact, Full Reel (25,000 Parts per Reel)		<b>-GF</b> = 3 μ" (0.07 μm) Gold contact and tail
		<b>CC09M</b> = Contact, Mini Reel (5,000 Parts per Reel)		



### TOOLING

Hand Tool: CAT-HT-309-2830-12

Clamp for mounting hand tool: CAT-HT-MNT-01

Mini Applicator: CAT-MC-309-2830-XX-01

**Note:** Some lengths, styles and options are non-standard, non-returnable.

View complete specifications at: [samtec.com?ISD1](http://samtec.com?ISD1), [samtec.com?CC09R](http://samtec.com?CC09R) & [samtec.com?CC09M](http://samtec.com?CC09M)

## X-ON Electronics

Largest Supplier of Electrical and Electronic Components

*Click to view similar products for [Rectangular Cable Assemblies](#) category:*

*Click to view products by [Samtec](#) manufacturer:*

Other Similar products are found below :

[MC320E-N-23](#) [A08KR08KR26E203B](#) [G125FC10668L0-0300L](#) [G125FC10668L0-0150L](#) [G125-FC11068L0-0150L](#) [G125-FC11068L0-0300L](#)  
[A06XAF06XAF22K254B](#) [A10XAF10XAF22K152B](#) [A13KR13KR26E254B](#) [A12SUR12SUR32W203A](#) [A16KR16KR26E203B](#)  
[A12KR12KR26E305A](#) [A12KR12KR26E305B](#) [A12ZR12ZR28H203B](#) [A12ZR12ZR28H203A](#) [A10SR10SR30K254A](#) [A09SR09SR30K305A](#)  
[A14KR14KR26E254A](#) [A14KR14KR26E254B](#) [A10ZR10ZR28H254A](#) [A09ZR09ZR28H305A](#) [A09ZR09ZR28H305B](#) [A13ZR13ZR28H203A](#)  
[A15KR15KR26E254A](#) [A13KR13KR26E305B](#) [A11ZR11ZR28H254A](#) [A11ZR11ZR28H254B](#) [A11SR11SR30K254A](#)  
[A12SUR12SUR32W254A](#) [A10ZR10ZR28H305A](#) [A14KR14KR26E305B](#) [A10ZR10ZR28H305B](#) [A12ZR12ZR28H254A](#)  
[A15KR15KR26E305A](#) [A15KR15KR26E305B](#) [A11SR11SR30K305A](#) [A11ZR11ZR28H305A](#) [A11ZR11ZR28H305B](#) [A13ZR13ZR28H254A](#)  
[A12SUR12SUR32W305A](#) [A12ZR12ZR28H305A](#) [A12ZR12ZR28H305B](#) [A20XAF20XAF22K51B](#) [A13ZR13ZR28H305A](#)  
[A20XAF20XAF22K102B](#) [A20XAF20XAF22K152B](#) [A20XAF20XAF22K203B](#) [A20XAF20XAF22K254B](#) [A20XAF20XAF22K305B](#)  
[A16XSR16XSR36R254B](#)