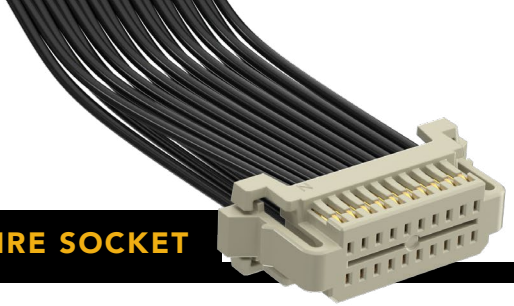
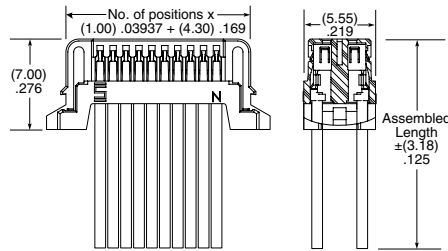
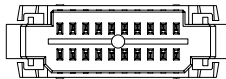


(1.00 mm) .0394" PITCH • DOUBLE ROW DISCRETE WIRE SOCKET



SERIES	PINS PER ROW	WIRE GAUGE	PLATING OPTION	ASSEMBLED LENGTH	WIRING OPTION
S1SD = Double Row PVC Cable	-02, -03 -04, -05, -10, -15, -20 (Standard sizes)	-28 = 28 AWG -30 = 30 AWG	-GF = 3 μ" (0.07 μm) Gold on contact and tail	-"XX.XX" = Assembled Length in Inches (45.72 mm) 01.80" min.	Double Ended Assemblies -L1 = Pin 1 to Pin 1 -L2 = Pin 1 to Pin 2 -L3 = Pin 1 to Pin N -L4 = Pin 1 to Pin N-1 Single Ended Assembly -L = Latching
S1SDT = Double Row Blue *Teflon® Cable					

S1SD(T)
Board Mates:
T1M
Cable Mates:
T1SD(T), T1PD(T)



SPECIFICATIONS

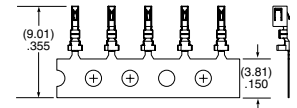
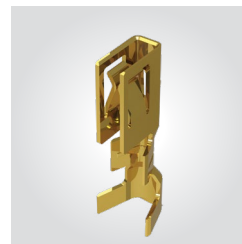
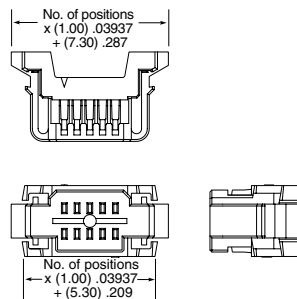
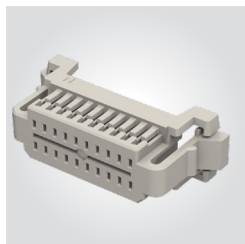
Insulator Material:
Natural Nylon
Contact Material:
Phosphor Bronze
Plating:
Au over 50 μ" (1.27 μm) Ni
Operating Temp Range (S1SD(T)/T1M):
-10 °C to +85 °C (PVC)
-40 °C to +125 °C (Teflon®)
Current Rating (28 AWG):
2.3 A per pin
(2 pins powered)
Voltage Rating:
250 VAC/353 VDC
Wire:
28 or 30 AWG

*DuPont™ Teflon® is a registered trademark of the E.I. du Pont de Nemours and Company or its affiliates.

Note:
Teflon® cable is intended for crimp only. Contact Samtec for solderable cable applications.

View complete specifications at: samtec.com?S1SD & samtec.com?S1SDT

SERIES	NO. OF POSITIONS	SERIES	01	PLATING
ISD1 = Double Row Body	-02, -03, -05, -07, -10, -15, -20 (Per Row)	CC09R = Contact, Full Reel (25,000 Parts per Reel)		-GF = 3 μ" (0.07 μm) Gold contact and tail
		CC09M = Contact, Mini Reel (5,000 Parts per Reel)		



TOOLING

Hand Tool: CAT-HT-309-2830-12

Clamp for mounting hand tool: CAT-HT-MNT-01

Mini Applicator: CAT-MC-309-2830-XX-01

Note:
Some lengths, styles and options are non-standard, non-returnable.

View complete specifications at: samtec.com?ISD1, samtec.com?CC09R & samtec.com?CC09M

X-ON Electronics

Largest Supplier of Electrical and Electronic Components

Click to view similar products for [Rectangular Cable Assemblies](#) category:

Click to view products by [Samtec](#) manufacturer:

Other Similar products are found below :

[MC320E-N-23](#) [A08KR08KR26E203B](#) [G125FC10668L0-0300L](#) [G125FC10668L0-0150L](#) [G125-FC11068L0-0150L](#) [G125-FC11068L0-0300L](#)
[A06XAF06XAF22K254B](#) [A10XAF10XAF22K152B](#) [A13KR13KR26E254B](#) [A12SUR12SUR32W203A](#) [A16KR16KR26E203B](#)
[A12KR12KR26E305A](#) [A12KR12KR26E305B](#) [A12ZR12ZR28H203B](#) [A12ZR12ZR28H203A](#) [A10SR10SR30K254A](#) [A09SR09SR30K305A](#)
[A14KR14KR26E254A](#) [A14KR14KR26E254B](#) [A10ZR10ZR28H254A](#) [A09ZR09ZR28H305A](#) [A09ZR09ZR28H305B](#) [A13ZR13ZR28H203A](#)
[A15KR15KR26E254A](#) [A13KR13KR26E305B](#) [A11ZR11ZR28H254A](#) [A11ZR11ZR28H254B](#) [A11SR11SR30K254A](#)
[A12SUR12SUR32W254A](#) [A10ZR10ZR28H305A](#) [A10ZR10ZR28H305B](#) [A12ZR12ZR28H254A](#) [A15KR15KR26E305A](#)
[A15KR15KR26E305B](#) [A11SR11SR30K305A](#) [A11ZR11ZR28H305A](#) [A11ZR11ZR28H305B](#) [A13ZR13ZR28H254A](#)
[A12SUR12SUR32W305A](#) [A12ZR12ZR28H305A](#) [A12ZR12ZR28H305B](#) [A20XAF20XAF22K51B](#) [A13ZR13ZR28H305A](#)
[A20XAF20XAF22K102B](#) [A20XAF20XAF22K152B](#) [A20XAF20XAF22K203B](#) [A20XAF20XAF22K254B](#) [A20XAF20XAF22K305B](#)
[A16XSR16XSR36R254B](#) [A03ZR03ZR28H51B](#)