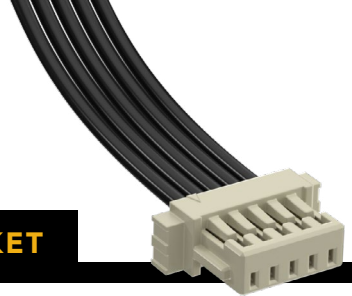


## (1.00 mm) .0394" PITCH • SINGLE ROW DISCRETE WIRE SOCKET



SERIES	PINS PER ROW	WIRE GAUGE	PLATING OPTION	ASSEMBLED LENGTH	OPTION
--------	--------------	------------	----------------	------------------	--------

**S1SS**  
= Single Row PVC Cable

**S1SST**  
= Single Row Blue \*Teflon® Cable (28 AWG only)

**-02, -03, -05, -07, -10 -15, -20**  
(Standard sizes)

**-28**  
= 28 AWG

**-28C**  
= 28 AWG Color Coded Cable (S1SS only)

**-30**  
= 30 AWG

**-30C**  
= 30 AWG Color Coded Cable (S1SS only)

**-GF**  
= 3 μm (0.07 μm) Gold on contact and tail

**-"XX.XX"**  
= Assembled Length in Inches (45.72 mm) 01.80" min.

(Required Callout)

**-L**  
= Single Ended With Latch

**-L1**  
= Double Ended Latch down, straight (Pin 1 to Pin 1)

**-L3**  
= Double Ended Latch up, straight (Pin 1 to Pin N)

**-S**  
= Single Ended No Latch

**-D-NUS**  
= Double Ended No Latch, "N" up, straight

**-D-NDS**  
= Double Ended No Latch, "N" down, straight

**S1SS(T)**  
Board Mates:  
T1M  
Cable Mates:  
T1SS(T), T1PS(T)

### SPECIFICATIONS

**Insulator Material:**  
Nylon, White (with latch)  
Black, LCP (without latch)

**Contact Material:**  
Phosphor Bronze

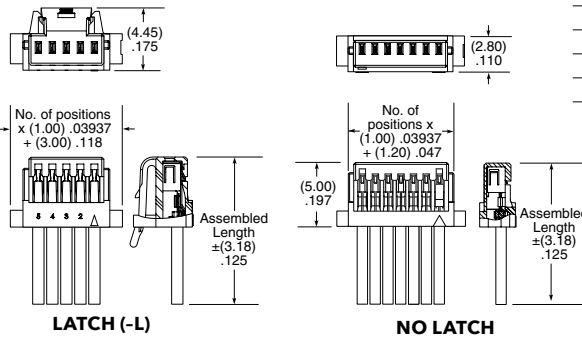
**Plating:**  
Au over 50 μm (1.27 μm) Ni

**Operating Temp Range (S1SS(T)/T1M):**  
-10 °C to +85 °C (PVC)  
-40 °C to +125 °C (Teflon®)

**Current Rating (28 AWG):**  
2.7 A per pin (1 pin powered)

**Voltage Rating:**  
250 VAC/353 VDC

**Wire:** 28 or 30 AWG



S1SS CABLE COLOR CODING	
PIN	COLOR
1	BROWN
2	RED
3	ORANGE
4	YELLOW
5	GREEN
6	BLUE
7	VIOLET
8	GRAY
9	WHITE
10	BLACK
ETC	REPEAT

\*DuPont™ Teflon® is a registered trademark of the E.I. du Pont de Nemours and Company or its affiliates.

**Note:**  
Teflon® cable is intended for crimp only. Contact Samtec for solderable cable applications.

View complete specifications at: [samtec.com?S1SS](http://samtec.com?S1SS) & [samtec.com?S1SST](http://samtec.com?S1SST)

SERIES	NO. OF POSITIONS	LATCH	SERIES	01	PLATING
--------	------------------	-------	--------	----	---------

**ISS1**  
= Single Row Body

**-02, -03, -05, -07, -10, -15, -20**

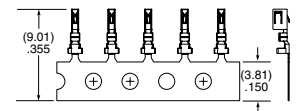
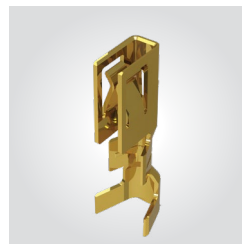
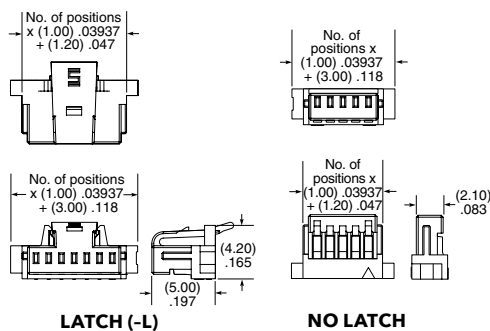
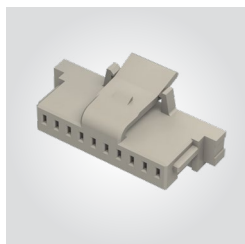
(Leave blank for no latch)

**-L**  
= Positive Latch

**CC09R**  
= Contact, Full Reel (25,000 Parts per Reel)

**-GF**  
= 3 μm (0.07 μm) Gold contact and tail

**CC09M**  
= Contact, Mini Reel (5,000 Parts per Reel)



### TOOLING

Hand Tool: CAT-HT-309-2830-12	Mini Applicator: CAT-MC-309-2830-XX-01
Clamp for mounting hand tool: CAT-HT-MNT-01	

**Note:**  
Some lengths, styles and options are non-standard, non-returnable.

View complete specifications at: [samtec.com?ISS1](http://samtec.com?ISS1), [samtec.com?CC09R](http://samtec.com?CC09R) & [samtec.com?CC09M](http://samtec.com?CC09M)

## X-ON Electronics

Largest Supplier of Electrical and Electronic Components

*Click to view similar products for [Rectangular Cable Assemblies](#) category:*

*Click to view products by [Samtec](#) manufacturer:*

Other Similar products are found below :

[MC320E-N-23](#) [A08KR08KR26E203B](#) [G125FC10668L0-0300L](#) [G125FC10668L0-0150L](#) [G125-FC11068L0-0150L](#) [G125-FC11068L0-0300L](#)  
[A06XAF06XAF22K254B](#) [A10XAF10XAF22K152B](#) [A13KR13KR26E254B](#) [A12SUR12SUR32W203A](#) [A16KR16KR26E203B](#)  
[A12KR12KR26E305A](#) [A12KR12KR26E305B](#) [A12ZR12ZR28H203B](#) [A12ZR12ZR28H203A](#) [A10SR10SR30K254A](#) [A09SR09SR30K305A](#)  
[A14KR14KR26E254A](#) [A14KR14KR26E254B](#) [A10ZR10ZR28H254A](#) [A09ZR09ZR28H305A](#) [A09ZR09ZR28H305B](#) [A13ZR13ZR28H203A](#)  
[A15KR15KR26E254A](#) [A13KR13KR26E305B](#) [A11ZR11ZR28H254A](#) [A11ZR11ZR28H254B](#) [A11SR11SR30K254A](#)  
[A12SUR12SUR32W254A](#) [A10ZR10ZR28H305A](#) [A14KR14KR26E305B](#) [A10ZR10ZR28H305B](#) [A12ZR12ZR28H254A](#)  
[A15KR15KR26E305A](#) [A15KR15KR26E305B](#) [A11SR11SR30K305A](#) [A11ZR11ZR28H305A](#) [A11ZR11ZR28H305B](#) [A13ZR13ZR28H254A](#)  
[A12SUR12SUR32W305A](#) [A12ZR12ZR28H305A](#) [A12ZR12ZR28H305B](#) [A20XAF20XAF22K51B](#) [A13ZR13ZR28H305A](#)  
[A20XAF20XAF22K102B](#) [A20XAF20XAF22K152B](#) [A20XAF20XAF22K203B](#) [A20XAF20XAF22K254B](#) [A20XAF20XAF22K305B](#)  
[A16XSR16XSR36R254B](#)