



(2.00 mm) .0787"

S2SD, S2SDT SERIES

TIGER EYE™ CABLE ASSEMBLY

SPECIFICATIONS

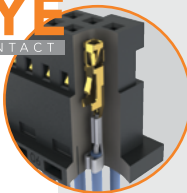
For complete specifications see www.samtec.com?S2SD or www.samtec.com?S2SDT

- Insulator Material:** Black LCP
- Contact Material:** BeCu
- Plating:** Au over 50 μ" (1.27 μm) Ni
- Wire:** 24, 26, 28 or 30 AWG
- Operating Temp Range:** -10 °C to +105 °C (PVC) -40 °C to +125 °C (*Teflon®)
- Current Rating (S2SD-24/T2M):** 3.8 A per pin (2 pins powered)
- Voltage Rating:** 250 VAC
- RoHS Compliant:** Yes

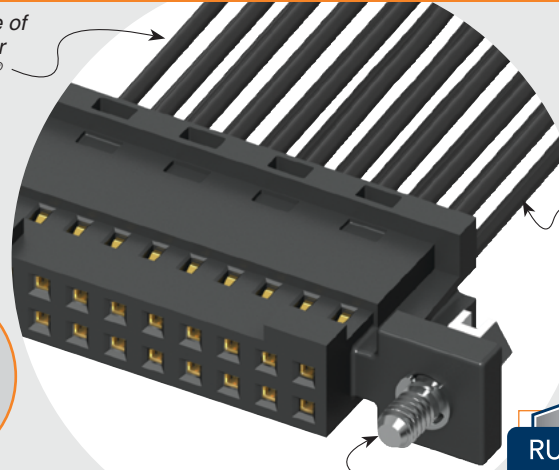
*DuPont™ Teflon® is a registered trademark of the E.I. du Pont de Nemours and Company or its affiliates.

Mates with:
T2M

TIGER EYE™
CONTACT



Choice of PVC or Teflon® cable



24, 26, 28 or 30 Wire gauge

Optional screw down

RUGGEDIZED
BY SAMTEC

- Tiger Eye™ contacts
- Retention latches

COMPONENTS

- For body, see www.samtec.com?ISD2
- For contacts, see www.samtec.com?CC81L www.samtec.com?CC81R

ALSO AVAILABLE (MOQ Required)

- Other sizes

APPLICATION

-24C CABLE COLOR CODING	
PIN	COLOR
1	BROWN
2	RED
3	ORANGE
4	YELLOW
5	GREEN
6	VIOLET
7	GRAY
8	WHITE
9	BLACK
10	BLUE
ETC	REPEAT

Notes:
For wiring option information refer to drawing on web.

Teflon® cable is intended for crimp only. Contact Samtec for solderable cable applications.

Some lengths, styles and options are non-standard, non-returnable.

TYPE	PINS PER ROW	WIRE GAUGE	PLATING OPTION	ASSEMBLED LENGTH	END OPTION	END 2 OPTION
S2SD = Double Row PVC Cable	-05, -07, -10, -15, -20, -25, -30 (Standard sizes)	-24 -24C = Color Coded Cable (S2SD only)	-L = 10 μ" (0.25 μm) Gold on contact	- "XX.XX" = Wire Length in Inches (69.85 mm) 02.75" min.	-S = Single End -D = Double End	(Only available with -D, -DR & -DS) -NUS = Notch up, straight (Pin 1 to Pin N-1) -NDS = Notch down, straight (Pin 1 to Pin 2) -NUX = Notch up, crossed (Pin 1 to Pin N) -NDX = Notch down, crossed (Pin 1 to Pin 1)

Specify "S" for single ended and "D" for double ended.
 -(X)R = Retention Latch (-SR mates with T2M-WT)
 -(X)S = Screw Down (10 positions minimum) (mates with T2M-DS)

Dimensions shown in drawings:
 -SR: (2.11) .083, (2.64) .104
 -D-NUS: (5.15) .203, (7.52) .296, (2.00) .0787, (4.42) .174, (11.38) .448, (1.60) .063
 No. of positions x (2.00) .0787 + (3.50) .138

Due to technical progress, all designs, specifications and components are subject to change without notice.

WWW.SAMTEC.COM

All parts within this catalog are built to Samtec's specifications. Customer specific requirements must be approved by Samtec and identified in a Samtec customer-specific drawing to apply.

X-ON Electronics

Largest Supplier of Electrical and Electronic Components

Click to view similar products for [Gate Drivers](#) category:

Click to view products by [Samtec](#) manufacturer:

Other Similar products are found below :

[00028](#) [00053P0231](#) [8967380000](#) [56956](#) [CR7E-30DB-3.96E\(72\)](#) [57.404.7355.5](#) [LT4936](#) [57.904.0755.0](#) [5801-0903](#) [5803-0901](#) [5811-0902](#)
[5813-0901](#) [58410](#) [00576P0030](#) [00581P0070](#) [5882900001](#) [00103P0020](#) [00600P0005](#) [00-9050-LRPP](#) [00-9090-RDPP](#) [5951900000](#) [01-](#)
[1003W-10/32-15](#) [LTI LA6E-1S-WH-RC-FN12VXCR1](#) [0131700000](#) [00-2240](#) [LTP70N06](#) [LVP640](#) [0158-624-00](#) [5J0-1000LG-SIL](#) [020017-13](#)
[LY1D-2-5S-AC120](#) [LY2-0-US-AC120](#) [LY2-US-AC240](#) [LY3-UA-DC24](#) [00-5150](#) [00576P0020](#) [00600P0010](#) [LZNQ2M-US-DC5](#) [LZNQ2-](#)
[US-DC12](#) [LZP40N10](#) [00-8196-RDPP](#) [00-8274-RDPP](#) [00-8275-RDNP](#) [00-8609-RDPP](#) [00-8722-RDPP](#) [00-8728-WHPP](#) [00-8869-RDPP](#) [00-](#)
[9051-RDPP](#) [00-9091-LRPP](#) [00-9291-RDPP](#)