

(1.27 mm) .050"

HIGH-SPEED/HIGH-DENSITY OPEN-PIN-FIELD

SPECIFICATIONS

For complete specifications and recommended PCB layouts see www.samtec.com?SEAF

Insulator Material:
Black LCP

Contact Material:
Copper Alloy

Operating Temp Range:
-55 °C to +125 °C

Current Rating (7 mm stack height):
2.7 A per pin
(10 adjacent pins powered)

Plating:

Au or Sn over
50 μ" (1.27 μm) Ni

Working Voltage:
240 VAC

RoHS Compliant:
Yes (-2 Solder type only)

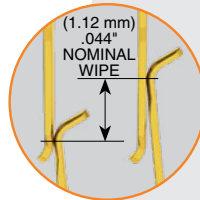
Lead-Free Solderable:
Yes

Board Mates:
SEAM, SEAMP,
SEAR, SEAMI

Cable Mates:
SEAC*

Standoffs:
JSO

*NOTE:
SEAF is recommended to mate to SEAC cable. Visit www.samtec.com?SEAF for specifications.



Up to 500 pins

Low insertion/extraction forces



HIGH-SPEED CHANNEL PERFORMANCE

SEAF/SEAM @ 10 mm Mated Stack Height

Rating based on Samtec reference channel. For full SI performance data visit www.samtec.com or contact SIG@samtec.com

PAM 4

56 Gbps

RECOGNITIONS

For complete scope of recognitions see www.samtec.com/quality

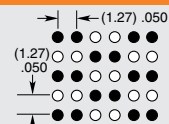


STANDARDS

- VITA 47
- VITA 57.1 FMC
- VITA 57.4 FMC+
- VITA 74 VNX
- PISMO™ 2

Visit www.samtec.com/standards for more information.

DIFFERENTIAL SIGNAL ROUTING



The above signal routing configuration allows for the use of 25 to 125 differential pair counts. Contact sig@samtec.com for specific details.

Notes:

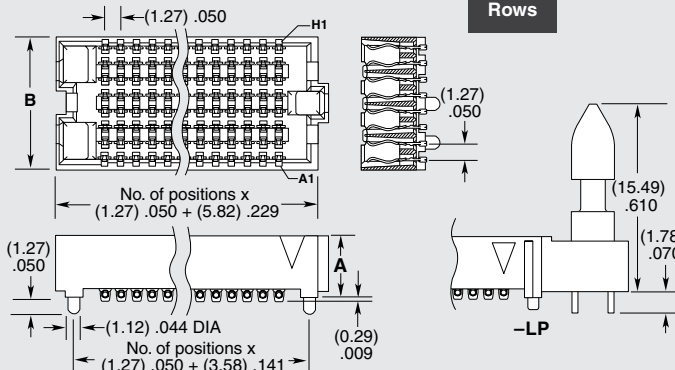
IPC-A-610F and IPC J-STD-001F Class 3 solder joint.

Some sizes, styles and options are non-standard, non-returnable.

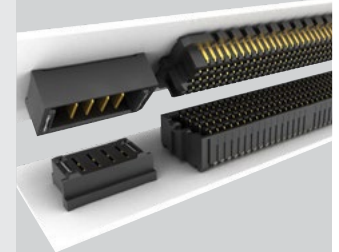
SEAF	NO. PINS PER ROW	LEAD STYLE	PLATING OPTION	NO. OF ROWS	SOLDER TYPE	A	OPTION	K	"X"R
	-10, -15, -20, -30, -40, -50	Specify LEAD STYLE from chart	-L = 10 μ" (0.25 μm) Gold on contact area, Matte Tin on solder tail -S = 30 μ" (0.76 μm) Gold on contact area, Matte Tin on solder tail	-04 = Four Rows -05 = Five Rows -06 = Six Rows -08 = Eight Rows -10 = Ten Rows	-1 = Tin/Lead Alloy Solder Charge -2 = Lead-Free Solder Charge		-LP = Latch Post (-LP required for SEAC mate only) (Available with -05.0 lead style and -04, -06, -08 & -10 rows only)		-TR = Tape & Reel -FR = Full Reel Tape & Reel Packaging (Must order max. quantities per reel. Contact Samtec for parts per reel)

NO. OF ROWS	B
-04	(5.66) .223
-05, -06	(8.20) .323
-08	(10.74) .423
-10	(13.28) .523

LEAD STYLE	A
-05.0	(5.05) .199
-06.0	(6.05) .238
-06.5	(6.55) .258
-07.5	(7.54) .297



POWER/SIGNAL APPLICATION



Compatible with UMP/T/UMPS for flexible two-piece power/signal solutions

Due to technical progress, all designs, specifications and components are subject to change without notice.

X-ON Electronics

Largest Supplier of Electrical and Electronic Components

Click to view similar products for [Board to Board & Mezzanine Connectors](#) category:

Click to view products by [Samtec](#) manufacturer:

Other Similar products are found below :

[10135583-642402LF](#) [89885-310LF](#) [589158040000018](#) [6-1393048-0](#) [68683-613](#) [MDF7-12DP-2.54DSA](#) [MDF7-18P-2.54DSA\(01\)](#) [MDF7-20DP-2.54DSA](#) [MDF7-26D-2.54DSA\(55\)](#) [MDF7-3P-2.54DSA\(01\)](#) [MDF7B-3P-2.54DSA\(55\)](#) [MDF7C-11P-2.54DSA\(55\)](#) [MDF7C-18P-2.54DSA\(55\)](#) [MDF7C-5P-2.54DSA\(01\)](#) [MDF7P-5P-2.54DSA\(55\)](#) [75234-0516](#) [FCN-230C068-11](#) [FCN-268F012-G/BD](#) [FCN-268F036-G/BD](#) [FCN-268M012-G/0D](#) [FCN-268M024-G/1D](#) [FCN-360C008-C](#) [FCN-360C040-C](#) [FCN-723J004/1](#) [MIS-048-01-F-D-DP-K](#) [832-10-034-10-001000](#) [93696-325LF](#) [11828-1FA](#) [AXK630345P](#) [18097-0013](#) [ICA-328STT](#) [2007042-2](#) [304400-2](#) [FCN-214Q030-G/0](#) [FCN-215Q040-G/0](#) [FCN-230C068-ESA](#) [FCN-234P048-G/0](#) [FCN-235D050-G/C](#) [FCN-360A3](#) [FCN-360C040-B](#) [210-93-314-41-105000](#) [2-22603-0](#) [379-064-521-202](#) [MDF7-12P-2.54DSA\(01\)](#) [MDF7-16P-2.54DS\(56\)](#) [MDF7-40DP-2.54DSA\(55\)](#) [MDF7-8P-2.54DSA\(55\)](#) [MDF7B-16P-2.54DSA\(55\)](#) [AXG720047](#) [5031084030](#)