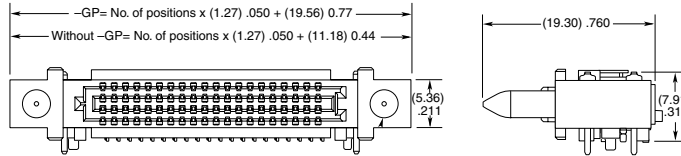
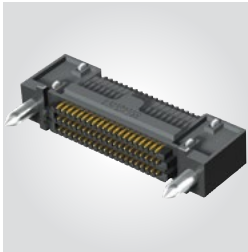


(1.27 mm) .050" PITCH • RIGHT-ANGLE & GUIDE POST

| SERIES | POSITIONS PER ROW | 01 | PLATING OPTION | NO. OF ROWS | SOLDER TYPE | RA | OPTIONS | "X"R |
|------------------------------|-------------------|----|---|-------------|--------------------------------------|----|--|--|
| SEAM Right-Angle Terminal | -20 | | -L = 10 μ" (0.25 μm) Gold on contact area, Matte Tin on solder tail | -04 | -1 = Tin/Lead Alloy Solder Charge | | -GP = Guide Post/Hole | -TR = Tape & Reel |
| | -30 | | | -06 | | | -K = Polyimide Film Pick & Place Pad | -FR = Full Reel Tape & Reel (must order max. quantity per reel; contact Samtec for quantity breaks) |
| SEAF Right-Angle Socket | -40 | | -S = 30 μ" (0.76 μm) Gold on contact area, Matte Tin on solder tail | -08 | -2 = Lead-Free Solder Charge | | -LP Latch Post (Available with SEAF in -06 Row with 30 positions only; Required for mating to SEAC) | |
| | -50 | | | -10 | | | -08 & -10 Row options require fixturing to process | |

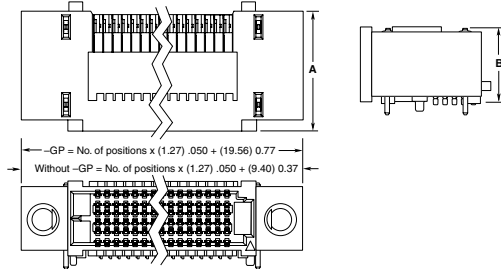
SEAM-RA

Board Mates:
SEAF, SEAF-RA, SEAFP



SEAF-RA

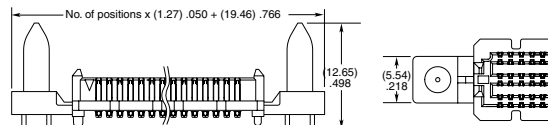
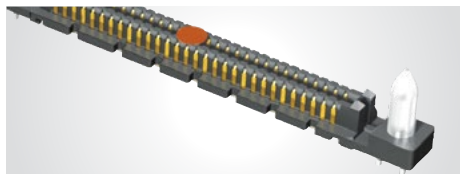
Board Mates:
SEAM, SEAFP



| NO. PINS PER ROW | A | B |
|------------------|--------------|--------------|
| -04 | (13.77) .542 | (7.91) .311 |
| -06 | (16.31) .642 | (10.45) .411 |
| -08 | (18.85) .742 | (12.99) .511 |
| -10 | (21.39) .842 | (15.53) .611 |

View complete specifications at: samtec.com?SEAM-RA & samtec.com?SEAF-RA

| SERIES | POSITIONS PER ROW | 02.0 | PLATING OPTION | NO. OF ROWS | SOLDER TYPE | A | GP | K | "X"R |
|----------------------------------|---|------|---|---------------------------------|--------------------------------------|---|----|---|--|
| SEAM Terminal with Guide post | -20, -30, -40, -50 | | -L = 10 μ" (0.25 μm) Gold on contact area, Matte Tin on solder tail | -04 | -1 = Tin/Lead Alloy Solder Charge | | | | -TR = Tape & Reel |
| | | | | -06 | | | | | -FR = Full Reel Tape & Reel (must order max. quantity per reel; contact Samtec for quantity breaks) |
| SEAM-GP | -S = 30 μ" (0.76 μm) Gold on contact area, Matte Tin on solder tail | | -08 | -2 = Lead-Free Solder Charge | | | | | |
| | | | -10 | | | | | | |



View complete specifications at: samtec.com?SEAM

Note: Some lengths, styles and options are non-standard, non-returnable

X-ON Electronics

Largest Supplier of Electrical and Electronic Components

Click to view similar products for [Board to Board & Mezzanine Connectors](#) category:

Click to view products by [Samtec](#) manufacturer:

Other Similar products are found below :

[589158040000018](#) [MDF7C-18P-2.54DSA\(55\)](#) [FCN-230C068-11](#) [FCN-268F012-G/BD](#) [FCN-268F036-G/BD](#) [FCN-268M012-G/0D](#) [FCN-268M024-G/1D](#) [FCN-723J004/1](#) [MIS-048-01-F-D-DP-K](#) [832-10-034-10-001000](#) [FX4C-80S-1.27DSA](#) [FCN-214Q030-G/0](#) [FCN-234P048-G/0](#) [FCN-235D050-G/C](#) [210-93-314-41-105000](#) [2-22603-0](#) [MDF7-40DP-2.54DSA\(55\)](#) [AXG720047](#) [5031084030](#) [MIT-114-03-F-D-K](#) [55323-1519](#) [DF33-2P-3.3DSA\(24\)](#) [YFT-20-05-H-03-SB-K](#) [503308-3040](#) [026-6203-PDB](#) [027-6203-PDB](#) [069159702701000](#) [10123981-102LF](#) [101A10019X](#) [55650-0588-C](#) [68684-306](#) [75140-7012](#) [194261-1](#) [FCN-268F024-G0D](#) [10124054-515LF](#) [68685-603](#) [8-1616154-3](#) [MIS-019-01-F-D](#) [541371078](#) [IL-WX-10PB-HF-B-E1000E](#) [FCN-268M024-G/3D](#) [20021832-06016C1LF](#) [KX15-20KLDL-E1000E](#) [MDF7-16DP-2.54DSA\(55\)](#) [AXE810124](#) [FCN-214J100-G/0](#) [FCN-230C068-E/S](#) [AXE812124](#) [AXE816124](#) [AXE720127](#)