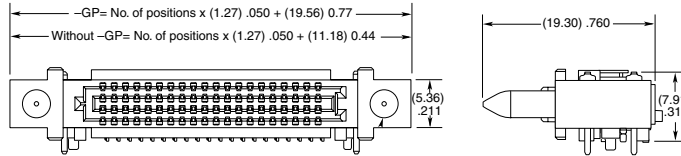
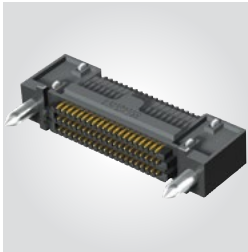


## (1.27 mm) .050" PITCH • RIGHT-ANGLE & GUIDE POST

| SERIES                       | POSITIONS PER ROW | 01 | PLATING OPTION                                                            | NO. OF ROWS                                        | SOLDER TYPE                          | RA | OPTIONS                                                                                                | "X"R                                                                                                   |
|------------------------------|-------------------|----|---------------------------------------------------------------------------|----------------------------------------------------|--------------------------------------|----|--------------------------------------------------------------------------------------------------------|--------------------------------------------------------------------------------------------------------|
| SEAM<br>Right-Angle Terminal | -20               |    | -L<br>= 10 μ" (0.25 μm)<br>Gold on contact area, Matte Tin on solder tail | -04                                                | -1<br>= Tin/Lead Alloy Solder Charge |    | -GP<br>= Guide Post/Hole                                                                               | -TR<br>= Tape & Reel                                                                                   |
|                              | -30               |    |                                                                           | -06                                                |                                      |    | -K<br>= Polyimide Film Pick & Place Pad                                                                | -FR<br>= Full Reel Tape & Reel (must order max. quantity per reel; contact Samtec for quantity breaks) |
|                              | -40               |    |                                                                           | -08                                                |                                      |    |                                                                                                        |                                                                                                        |
| SEAF<br>Right-Angle Socket   | -50               |    | -S<br>= 30 μ" (0.76 μm)<br>Gold on contact area, Matte Tin on solder tail | -10                                                | -2<br>= Lead-Free Solder Charge      |    | -LP<br>Latch Post (Available with SEAF in -06 Row with 30 positions only; Required for mating to SEAC) |                                                                                                        |
|                              |                   |    |                                                                           | -08 & -10 Row options require fixturing to process |                                      |    |                                                                                                        |                                                                                                        |

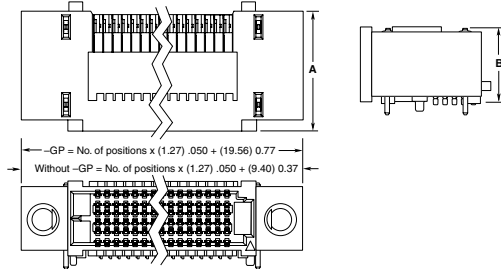
### SEAM-RA

Board Mates:  
SEAF, SEAF-RA, SEAFP



### SEAF-RA

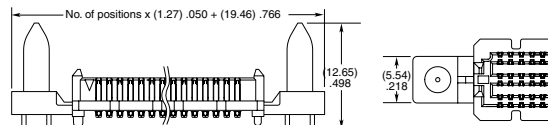
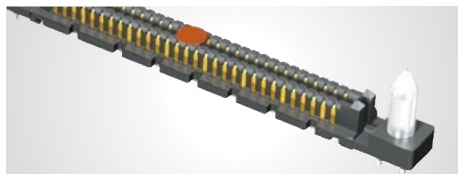
Board Mates:  
SEAM, SEAFP



| NO. PINS PER ROW | A            | B            |
|------------------|--------------|--------------|
| -04              | (13.77) .542 | (7.91) .311  |
| -06              | (16.31) .642 | (10.45) .411 |
| -08              | (18.85) .742 | (12.99) .511 |
| -10              | (21.39) .842 | (15.53) .611 |

View complete specifications at: [samtec.com?SEAM-RA](http://samtec.com?SEAM-RA) & [samtec.com?SEAF-RA](http://samtec.com?SEAF-RA)

| SERIES                                | POSITIONS PER ROW  | 02.0 | PLATING OPTION                                                            | NO. OF ROWS                                        | SOLDER TYPE                          | A | GP | K | "X"R                                    |                                                                                                        |
|---------------------------------------|--------------------|------|---------------------------------------------------------------------------|----------------------------------------------------|--------------------------------------|---|----|---|-----------------------------------------|--------------------------------------------------------------------------------------------------------|
| SEAM<br>Terminal with Guide post      | -20, -30, -40, -50 |      | -L<br>= 10 μ" (0.25 μm)<br>Gold on contact area, Matte Tin on solder tail | -04                                                | -1<br>= Tin/Lead Alloy Solder Charge |   |    |   | -TR<br>= Tape & Reel                    |                                                                                                        |
|                                       |                    |      |                                                                           | -06                                                |                                      |   |    |   | -K<br>= Polyimide Film Pick & Place Pad | -FR<br>= Full Reel Tape & Reel (must order max. quantity per reel; contact Samtec for quantity breaks) |
|                                       |                    |      |                                                                           | -08                                                |                                      |   |    |   |                                         |                                                                                                        |
| SEAM-GP<br>Board Mates:<br>SEAF-RA-GP |                    |      | -S<br>= 30 μ" (0.76 μm)<br>Gold on contact area, Matte Tin on solder tail | -10                                                | -2<br>= Lead-Free Solder Charge      |   |    |   |                                         |                                                                                                        |
|                                       |                    |      |                                                                           | -08 & -10 Row options require fixturing to process |                                      |   |    |   |                                         |                                                                                                        |



View complete specifications at: [samtec.com?SEAM](http://samtec.com?SEAM)

**Note:** Some lengths, styles and options are non-standard, non-returnable

## X-ON Electronics

Largest Supplier of Electrical and Electronic Components

*Click to view similar products for [Board to Board & Mezzanine Connectors](#) category:*

*Click to view products by [Samtec](#) manufacturer:*

Other Similar products are found below :

[589158040000018](#) [MDF7C-18P-2.54DSA\(55\)](#) [FCN-230C068-11](#) [FCN-268F012-G/BD](#) [FCN-268F036-G/BD](#) [FCN-268M012-G/0D](#) [FCN-268M024-G/1D](#) [FCN-723J004/1](#) [MIS-048-01-F-D-DP-K](#) [832-10-034-10-001000](#) [FX4C-80S-1.27DSA](#) [FCN-214Q030-G/0](#) [FCN-234P048-G/0](#) [FCN-235D050-G/C](#) [210-93-314-41-105000](#) [2-22603-0](#) [MDF7-40DP-2.54DSA\(55\)](#) [AXG720047](#) [5031084030](#) [MIT-114-03-F-D-K](#) [55323-1519](#) [DF33-2P-3.3DSA\(24\)](#) [YFT-20-05-H-03-SB-K](#) [503308-3040](#) [026-6203-PDB](#) [027-6203-PDB](#) [069159702701000](#) [10123981-102LF](#) [101A10019X](#) [55650-0588-C](#) [68684-306](#) [75140-7012](#) [589159005003045](#) [194261-1](#) [FCN-268F024-G0D](#) [10124054-515LF](#) [68685-603](#) [8-1616154-3](#) [MIS-019-01-F-D](#) [589159005002045](#) [541371078](#) [IL-WX-10PB-HF-B-E1000E](#) [FCN-268M024-G/3D](#) [20021832-06016C1LF](#) [KX15-20KLDL-E1000E](#) [MDF7-16DP-2.54DSA\(55\)](#) [AXE810124](#) [FCN-214J100-G/0](#) [FCN-230C068-E/S](#) [AXE812124](#)