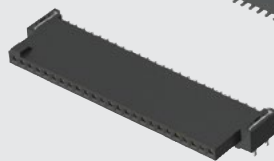




**TIGER EYE**  
SYSTEM

SFM-110-02-L-D-A

SFML-125-T2-L-D-LC



SFML-115-T2-L-D-LC

SFM-125-02-L-SH

(1.27 mm) .050"

# SMT & THROUGH-HOLE TIGER EYE™ SOCKET

## SPECIFICATIONS

For complete specifications and recommended PCB layouts see [www.samtec.com?SFM](http://www.samtec.com?SFM) or [www.samtec.com?SFML](http://www.samtec.com?SFML)

**Insulator Material:**  
Black Liquid Crystal Polymer  
**Plating:**  
Au or Sn over 50 μm (1.27 μm) Ni  
**Current Rating (SFM/TFM):**  
3.2 A per pin  
(2 pins powered)  
**Voltage Rating:**  
250 VAC mated with TFM  
**Operating Temp Range:**  
-55 °C to +125 °C  
**Insertion Depth:**  
(3.05 mm) .120" to  
(4.06 mm) .160"  
**Wiping Distance:**  
(0.38 mm) .015"  
**Normal Force:**  
Standard= 132 g (1.29 N) avg.;  
LIF= 90 g (0.88 N) avg.  
**Max Cycles:**  
10,000 with 30 μm (0.76 μm) Au  
(Call Samtec for E.L.P.™  
plating option)  
**RoHS Compliant:**  
Yes

**SFM Board Mates:**

TFM

**SFM Cable Mates:**

TFSD, TFSS

**SFML Board Mates:**

TFML



Low insertion force  
Tiger Eye™ contacts available

(1.27 mm x 1.27 mm)  
.050" x .050" micro pitch

Locking feature  
increases unmating  
force (SFML)

Choice of SMT or  
through-hole tails

**RUGGEDIZED**  
BY SAMTEC

- Passes 10 Year MFG
- Locking option
- Locking clip option
- Screw Down option

**HIGH-SPEED CHANNEL PERFORMANCE**

Rating based on Samtec reference channel. For full SI performance data visit [Samtec.com](http://Samtec.com) or contact [SIG@samtec.com](mailto:SIG@samtec.com)

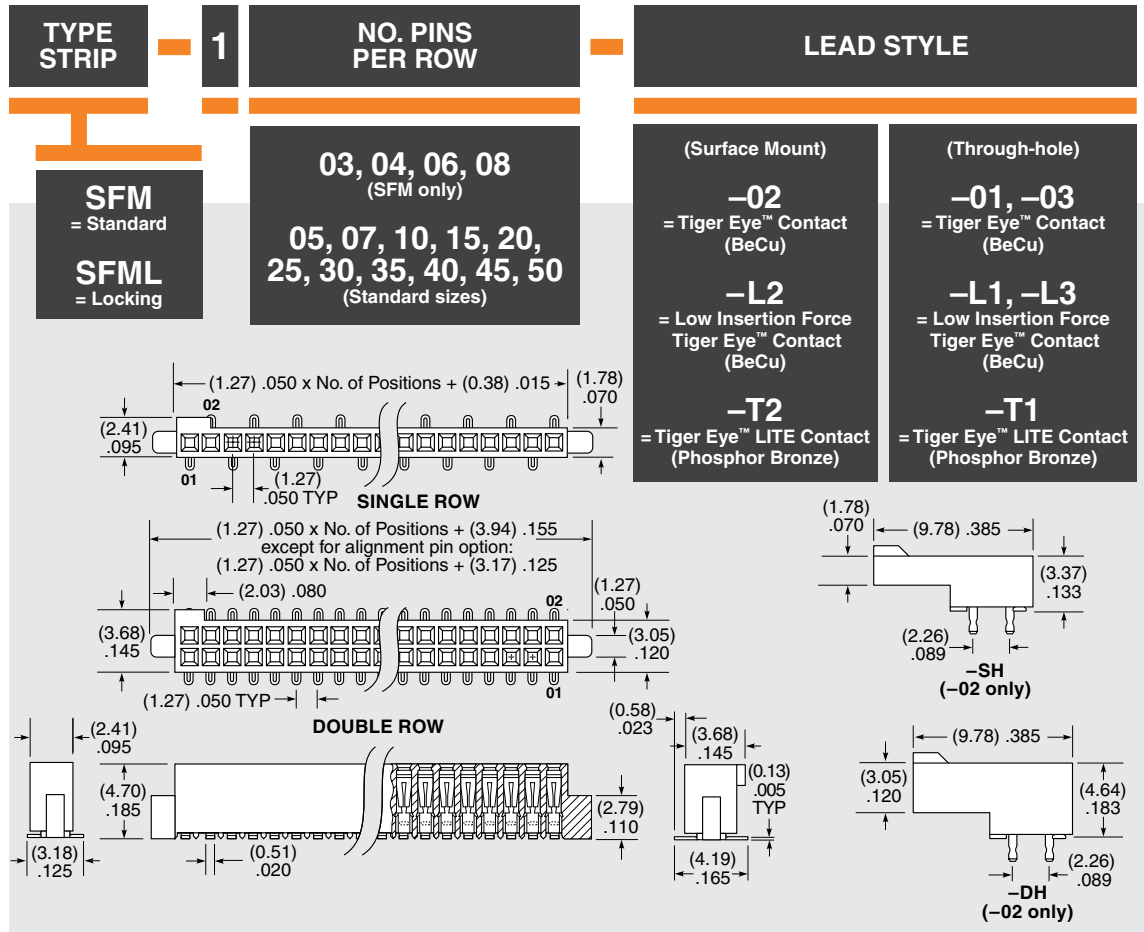
**8**  
Gbps

## PROCESSING

**Lead-Free Solderable:**  
Yes  
**SMT Lead Coplanarity:**  
(0.10 mm) .004" max (05-25)  
(0.15 mm) .006" max (30-50)\*  
\*(.004" stencil solution  
may be available; contact  
IPG@samtec.com)

## RECOGNITIONS

For complete scope of recognitions see [www.samtec.com/quality](http://www.samtec.com/quality)

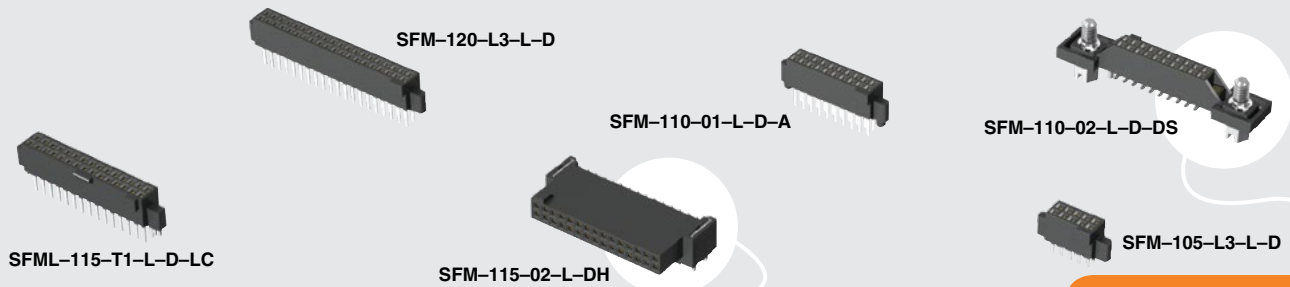


**Note:**  
Some sizes, styles and options are non-standard, non-returnable.

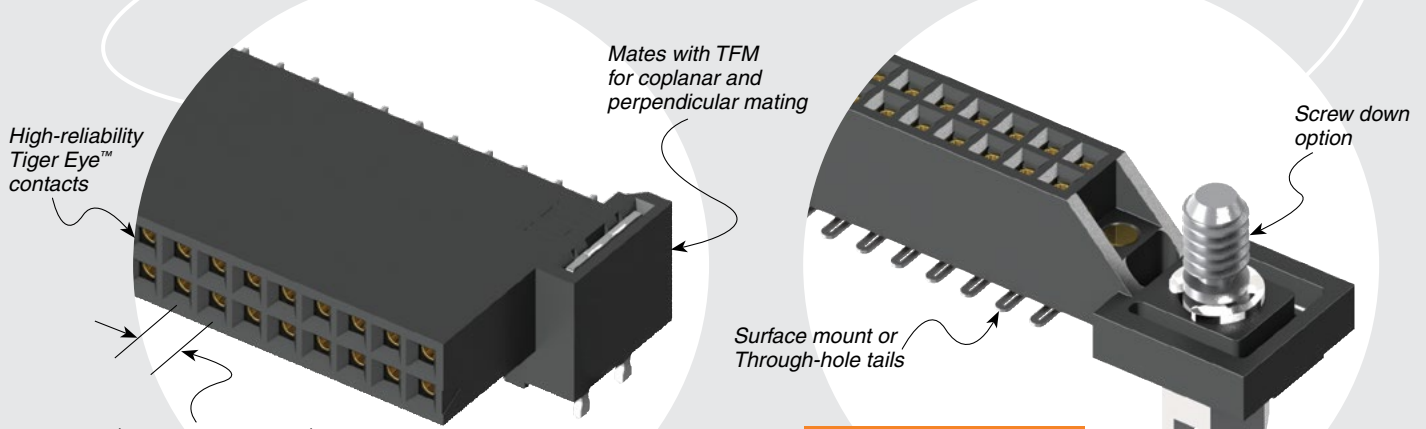
Due to technical progress, all designs, specifications and components are subject to change without notice.

[WWW.SAMTEC.COM](http://WWW.SAMTEC.COM)

All parts within this catalog are built to Samtec's specifications. Customer specific requirements must be approved by Samtec and identified in a Samtec customer-specific drawing to apply.



**SFM, SFML SERIES**



(1.27 mm x 1.27 mm)  
.050" x .050" micro pitch

**OTHER SOLUTIONS**

- Lower cost plating options. See SFC Series.

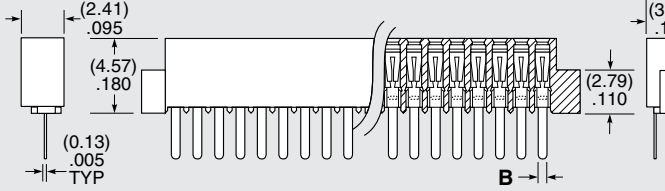
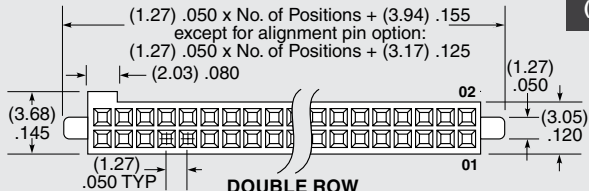
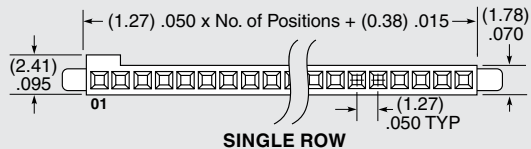
**ALSO AVAILABLE (MOQ Required)**

- Solder nail option
- Other sizes
- Other platings

**PLATING OPTION**

**-L**  
= 10 μ" (0.25 μm) Gold on contact, Matte Tin on tail  
(Call Samtec for E.L.P.™ plating option)

LEAD STYLE	A	B
-01, -L1, -T1	(3.05) .120	(0.51) .020
-03, -L3	(1.91) .075	(0.41) .016



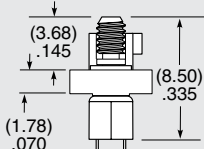
**ROW OPTION**

**-S**  
= Single Row (SFM only)

**-D**  
= Double Row

**-SH**  
= Single Horizontal (05 thru 30 positions only) (SFM only) (Lead style -02 only)

**-DH**  
= Double Horizontal (05 thru 30 positions only) (SFM only) (Lead style -02 only)



**OPTION**

Specify only -A, -LC or -DS (Not available with -DH, -SH)

**-A**  
= Alignment Pin (Available with all lead styles)

**-LC**  
= Locking Clip (Available with all lead styles) (Manual placement required)

**-DS**  
= Dual Screw Down for (1.60 mm) .062" PCB (05 thru 40 positions only) (Lead styles -01, -02 & -03 only) (Requires -D row option) (Not available with SFML) (Mates with TFM-DS option) (Not available with -A, -LC, -K, -P, -TR)

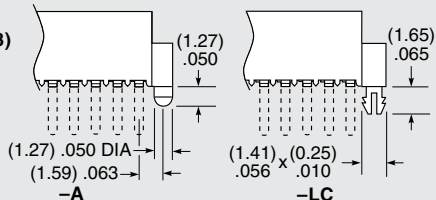
Specify only -K or -P (Lead styles -02, -L2, -T2 only)

**-K**  
= Polyimide film Pick & Place Pad (Not available with -DH, -SH)

**-P**  
= Plastic Pick & Place Pad (Not available with -DH, -SH)

Specify -TR last (Lead styles -02, -L2, -T2 only)

**-TR**  
= Tape & Reel (Required callout for -DH, -SH)



Due to technical progress, all designs, specifications and components are subject to change without notice.

## X-ON Electronics

Largest Supplier of Electrical and Electronic Components

*Click to view similar products for [samtec](#) manufacturer:*

Other Similar products are found below :

[MTMM-105-09-H-D-390](#) [YTW-20-07-H-6-520-110](#) [TW-10-08-H-D-616-107](#) [TW-15-08-H-D-600-080](#) [TW-30-08-H-D-616-107](#) [MTMM-108-05-H-D-220](#) [MTMM-120-06-H-D-180](#) [MTMM-103-05-H-D-220](#) [SSM-105-H-DV-A-P-TR](#) [ERCD-060-19.00-TEU-TBL-1-3](#) [SSQ-108-01-SM-S](#) [SSQ-105-01-SM-S](#) [ACD-185680-02](#) [ESQT-112-02-F-D-375](#) [ESQT-135-03-F-D-380](#) [FTSH-111-01-L-DV](#) [QTE-060-01-L-D-A](#) [MSAS-179-ZUGG-18](#) [MTMM-103-05-H-D-300](#) [MTMM-142-05-H-D-126](#) [MTSW-103-07-F-S-240](#) [MTSW-125-24-H-D-285](#) [ERF8-020-05.0-S-DV-K-TR](#) [IDMD-10-T-12.00-A-G-R](#) [IPL1-112-01-L-D-K](#) [IPL1-116-01-H-D](#) [SFM-107-02-S-D-LC](#) [SFML-115-01-S-D](#) [SFML-125-01-S-D](#) [SFSDT-15-28-H-04.50-DR-NDS](#) [LSHM-120-02.5-L-DV-A-N-K-TR](#) [SMS-125-02-S-D](#) [ESQ-110-14-G-D](#) [ESQT-125-03-F-D-310](#) [ESQT-133-03-F-D-350](#) [SO-0515-01-01-02](#) [SQW-120-01-F-D-VS-A](#) [SSW-110-02-H-D](#) [FJH-50-D-12.00-4](#) [CES-150-01-T-D](#) [QFS-052-01-SL-D-RA](#) [QTE-040-04-L-D-A](#) [QTH-020-04-F-D-DP-A-K-TR](#) [QTH-060-01-F-D-A](#) [QTH-090-04-L-D-A](#) [TCSD-10-S-05.00-01-F-N](#) [TFM-110-02-S-D](#) [TFM-115-02-L-DH](#) [TFM-120-12-S-D-LC](#) [TFML-140-02-S-D](#)