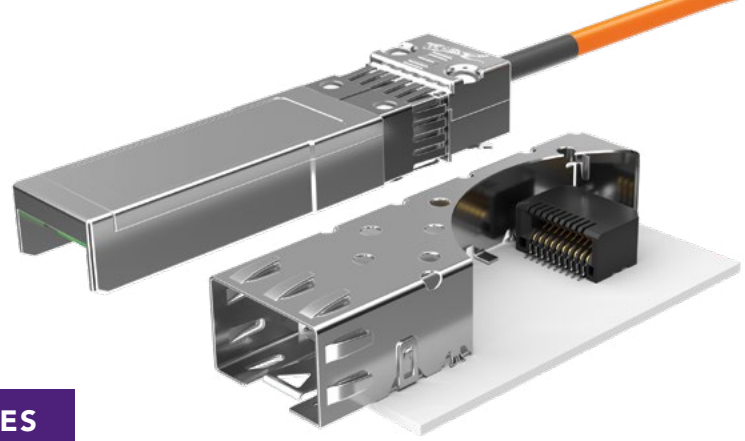


SFP & SFP+ CABLE & TRANSCEIVER

(0.80 mm) .0315" PITCH • SFPE/MECT SERIES

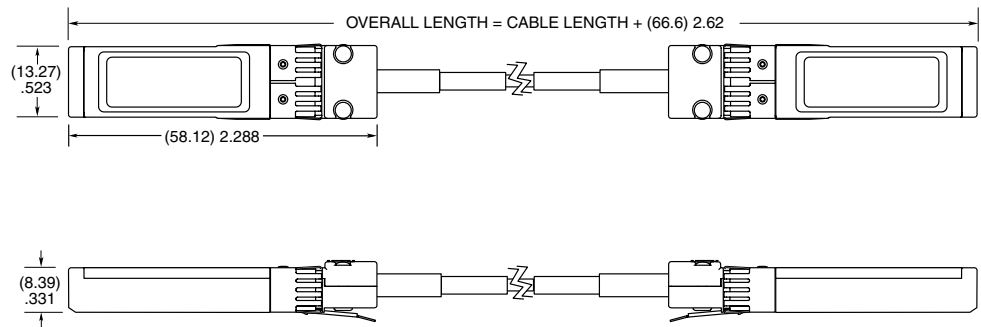


SFPE
Mates:
MECT, SFPC

SPECIFICATIONS

Impedance:
100 Ω
Signal Routing:
Differential

SFPE	NO. OF PAIRS	CABLE LENGTH	EQUALIZATION	WIRE GAUGE
	-010 = 2 Pairs	-XXXX = Length in millimeters -1000, -2000, -3000 (Standard lengths)	-NE = Non Equalized	-32 = 32 AWG

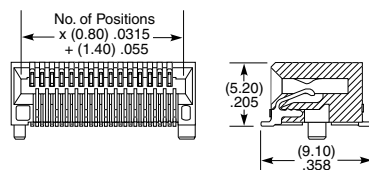
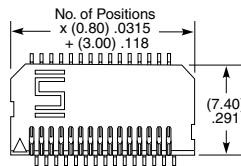


MECT
Mates:
SFP, SFP+, XFP or
XENPAK transceivers

SPECIFICATIONS

Insulator Material:
Black LCP
Contact Material:
Phosphor Bronze
Plating:
Sn or Au over
100 μ" (2.54 μm) Ni
Operating Temp Range:
-55 °C to +125 °C
Current Rating:
2 A per pin
(6 pins powered)
Voltage Rating:
265 VAC

MECT	1	POSITIONS PER ROW	CARD THICKNESS	PLATING OPTION	D	RA1	OTHER OPTION
		10, 15, 35	-01 = (1 mm) .039" thick board	-M = 15 μ" (0.38 μm) Gold on contact, Matte Tin on tail			-TR = Tape & Reel -FR = Full Reel Tape & Reel (must order max. quantity per reel; contact Samtec for quantity breaks)

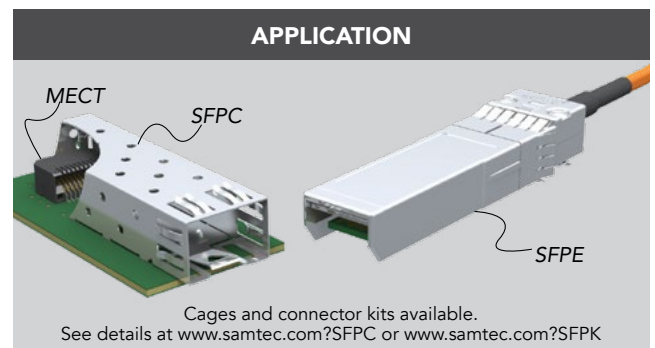


15 POSITIONS SHOWN

PROCESSING

Lead-Free Solderable:
Yes
SMT Lead Coplanarity:
(0.10 mm) .004" max

Note:
Some sizes, styles and
options are non-standard,
non-returnable.



X-ON Electronics

Largest Supplier of Electrical and Electronic Components

Click to view similar products for [Fibre Optic Cable Assemblies](#) category:

Click to view products by [Samtec](#) manufacturer:

Other Similar products are found below :

[7-21002-9](#) [760-1518](#) [FA04390-50-M-72-LC-N](#) [MLB 501 V RED](#) [MLB 501 V YELLOW](#) [1-3636-600-5208](#) [2061529-7](#) [1-6693182-0](#)
[1754898-1](#) [21055-6](#) [FXBSCSCE2LM002](#) [3000005](#) [3-21053-2](#) [MLB 2001 V RED](#) [MLB 2001 V YELLOW](#) [MLB 501 V BLACK](#) [5492011-6](#)
[106284-7000](#) [5492011-5](#) [5492011-8](#) [5492011-9](#) [8-21007-5](#) [2123524-2](#) [2123524-1](#) [106386-4447](#) [DFSM-SCSC-2M](#) [2123909-4](#) [2123909-8](#)
[106273-0629](#) [2125046-1](#) [2821236-3](#) [2821310-2](#) [2821310-3](#) [2821313-4](#) [FX2ERLNLNSNM0.5](#) [CF-980062-074](#) [CF-901200-394](#) [CF-980062-](#)
[073](#) [CF-980062-071](#) [CF-980062-075](#) [CF-980062-072](#) [17-300310-100](#) [2821236-2](#) [2821313-1](#) [G-FC-FC-S-002.0-DX-A-18-Y](#) [G-E2A-E2A-S-](#)
[003.0-SX-A-18-Y](#) [956-322-502214](#) [FA04474](#) [1083665](#) [1111540](#)