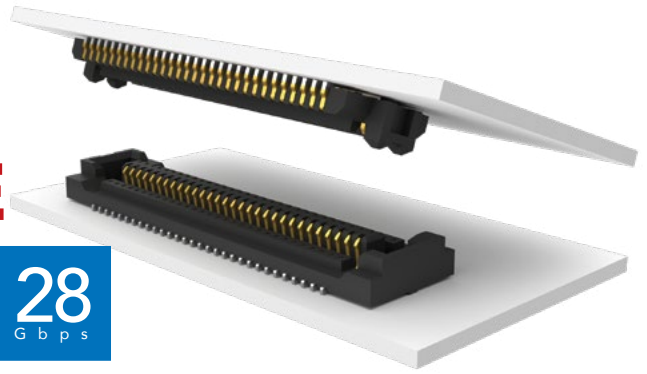


# ULTRA-LOW PROFILE HEADER & SOCKET

(0.50 mm) .0197" PITCH • SLH/TLH SERIES



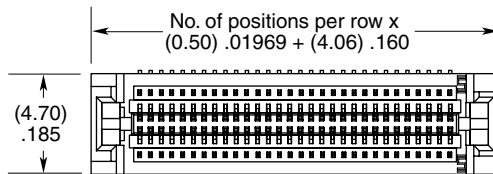
**SLH**  
Mates:  
TLH

**TLH**  
Mates:  
SLH

SLH	NO. OF POSITIONS	LEAD STYLE	PLATING OPTION	D	OPTION	OPTION
	-010, -020, -030 (Per Row)	-1.50 =1.50 mm	-G = 10 μm (0.25 μm) Gold in contact, Gold flash on tail		-A = Alignment Pin	-K = (3.00 mm) .118" DIA Polyimide Film Pick & Place Pad

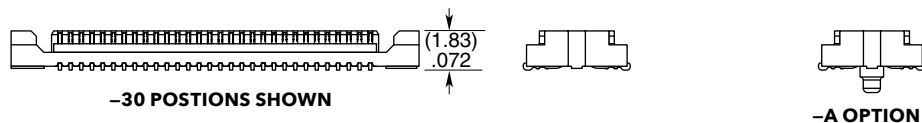
## SPECIFICATIONS

**Insulator Material:**  
Black Liquid Crystal Polymer  
**Contact Material:**  
Copper Alloy  
**Plating:**  
Au over 50 μm (1.27 μm) Ni  
**Current Rating:**  
2.1 A per pin  
(2 pins powered)  
**Operating Temp Range:**  
-55 °C to +125 °C

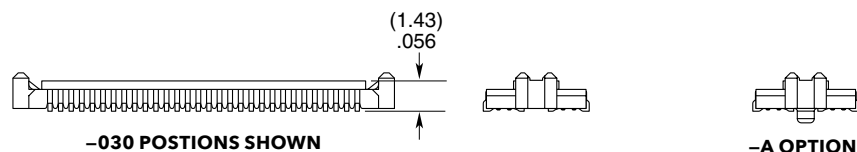
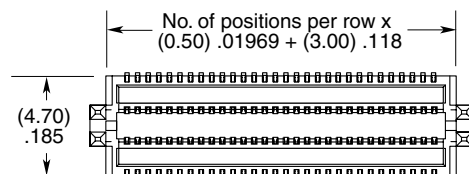


## PROCESSING

**Lead-Free Solderable:**  
Yes  
**SMT Lead Coplanarity:**  
(0.10 mm) .004" max  
**Board Stacking:**  
For applications requiring two  
or more connectors per board,  
contact [ipg@samtec.com](mailto:ipg@samtec.com)



TLH	NO. OF POSITIONS	LEAD STYLE	PLATING OPTION	D	OPTION	OPTION
	-010, -020, -030 (Per Row)	-0.50 =0.50 mm	-G = 10 μm (0.25 μm) Gold in contact, Gold flash on tail		-A = Alignment Pin	-K = (3.00 mm) .118" DIA Polyimide Film Pick & Place Pad



**Note:**  
Some lengths, styles and  
options are non-standard,  
non-returnable.

## X-ON Electronics

Largest Supplier of Electrical and Electronic Components

*Click to view similar products for [Board to Board & Mezzanine Connectors](#) category:*

*Click to view products by [Samtec](#) manufacturer:*

Other Similar products are found below :

[589158040000018](#) [FCN-230C068-11](#) [FCN-268F012-G/BD](#) [FCN-268F036-G/BD](#) [FCN-268M012-G/0D](#) [FCN-268M024-G/1D](#) [FCN-723J004/1](#) [MIS-048-01-F-D-DP-K](#) [832-10-034-10-001000](#) [FX4C-80S-1.27DSA](#) [FCN-214Q030-G/0](#) [FCN-234P048-G/0](#) [FCN-235D050-G/C](#) [210-93-314-41-105000](#) [2-22603-0](#) [MDF7-40DP-2.54DSA\(55\)](#) [AXG720047](#) [5031084030](#) [MIT-114-03-F-D-K](#) [55323-1519](#) [DF33-2P-3.3DSA\(24\)](#) [YFT-20-05-H-03-SB-K](#) [503308-3040](#) [026-6203-PDB](#) [027-6203-PDB](#) [069159702701000](#) [10123981-102LF](#) [101A10019X](#) [55650-0588-C](#) [68684-306](#) [75140-7012](#) [589159005003045](#) [194261-1](#) [FCN-268F024-G0D](#) [10124054-515LF](#) [68685-603](#) [8-1616154-3](#) [MIS-019-01-F-D](#) [589159005002045](#) [541371078](#) [IL-WX-10PB-HF-B-E1000E](#) [FCN-268M024-G/3D](#) [20021832-06016C1LF](#) [KX15-20KLDL-E1000E](#) [MDF7-16DP-2.54DSA\(55\)](#) [AXE810124](#) [FCN-214J100-G/0](#) [FCN-230C068-E/S](#) [AXE812124](#) [AXE816124](#)