

SMMP TO 65 GHz

SMMP Cable Assemblies

RF047-A, RF086, RF23C



VSWR

RF047-A: 1.40 max.
RF086: 1.40 max.
RF23C: 1.20 max. (DC to 26.5 GHz)
 1.40 max. (26.5 GHz to 50 GHz)

SERIES	END 1 CONNECTOR	END 2 CONNECTOR	OVERALL LENGTH
RF047-A = (1.2 mm) .047" overshield DIA 29 AWG millimeter cable RF086 = (2.18 mm) .086" overshield DIA 23 AWG millimeter cable RF23C = MWC-2350CU-01 millimeter wave cable with copper foil shield	-MOSP = SMMP Straight Plug, Full Detent -MOSJ = SMMP Straight Jack -MORJ = SMMP Right-angle Jack (RF047-A only) -MOBJ = SMMP Straight Bulkhead Jack (RF047-A only)	-"XXXX" = Overall Length in millimeters -0100 (100 mm) 3.94" minimum	

ALSO AVAILABLE

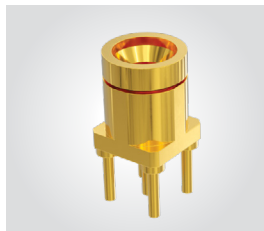
1.00 mm, 1.35 mm, 1.85 mm, 2.40 mm,
 2.92 mm, SMP, SMA = RF047-A
 1.85 mm, 2.40 mm, 2.92 mm, SMP, SMA = RF086
 2.40 mm, 2.92 mm, SMP, SMA = RF23C

SMMP Board Connectors

SMPM-SM, SMPM-TH, SMPM-RA, SMPM-MT, SMPM-EM

Cable Mates:

RF047-A, RF086, RF23C



SMMP	GENDER	TYPE	PLATING	ORIENTATION	TERMINATION	OPTION
	-PF = Full Detent -PS = Smooth Bore -PC = Catcher's Mitt (-ST-TH, -ST-MT & -ST-SM only)	-P = PCB Mount	-HG = 30 μ" (0.76 μm) Gold center contact, 10 μ" (0.25 μm) Gold outer contact (-ST only) -HF = 30 μ" (0.76 μm) Gold center contact, 3 μ" (0.08 μm) Gold outer contact (-RA only) -EG = 50 μ" (1.27 μm) Gold center contact, 10 μ" (0.25 μm) Gold on body (-MT & -SM only) -EE = 50 μ" (1.27 μm) extra heavy Gold center contact and outer body (SM-2 only)	-ST = Straight -RA = Right-angle (-TH required)	-EM = Drop-in Edge Mount (-ST only) -TH = Through-hole -SM = Surface Mount (-ST only) -MT = Mixed Technology (-ST only)	-1 = Standard -2 = Reverse Mount (-EE and -SM only; see website for print)
 -ST-TH-1	 -RA-TH-1	 -ST-SM-1	 -ST-EM-1			

SMMP Cable Connectors

PRFM0

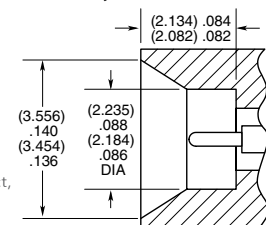


CONNECTORS FOR INDUSTRY STANDARD CABLES

PRFM0-J-C-EE-085-BD	Harbour SS405
PRFM0-J-C-EE-047A-BD	Temp-Flex 1000671047
PRFM0-J-C-HG-047A-SD	Temp-Flex 1000671047
PRFM0-J-C-EE-047A-RD	Temp-Flex 1000671047
PRFM0-P-C-HG-047A-SD	Temp-Flex 1000671047
PRFM0-J-C-EE-047B-SD	Temp-Flex 1001935047
PRFM0-J-C-EE-086-SD	Temp-Flex 1001935086
PRFM0-P-C-EE-086-SD	Temp-Flex 1001935086

For a complete list of SMMP cable connectors, visit www.samtec.com?PRFM0

INTERFACE STANDARD (CATCHER'S MITT)



P-C = Cable Plug
 J-C = Cable Jack
 EE = Plating
 (50 μ" Gold center contact,
 & outer contact)
 HG = Plating
 (30 μ" Gold center contact,
 10 μ" Gold outer contact)
 SD = Straight, Direct Solder
 BD = Bulkhead, Direct Solder
 RD = Right-angle, Direct Solder

X-ON Electronics

Largest Supplier of Electrical and Electronic Components

Click to view similar products for [RF Connectors](#) / [Coaxial Connectors](#) category:

Click to view products by [Samtec](#) manufacturer:

Other Similar products are found below :

[89674-0827](#) [6059674-1](#) [630059-000](#) [6501-1071-002](#) [6769](#) [7002-1541-010](#) [7002-1572-002](#) [7004-1512-000](#) [7009-1511-004](#) [7101-1541-010](#)
[7101-1571-002](#) [7105-1521-002](#) [7203-1571-003](#) [7209-1511-011](#) [7210-1511-040](#) [7242-1511-000](#) [7405-1521-005](#) [7405-1521-802](#)
[804S01D04M040](#) [8527](#) [8547](#) [FS11V](#) [877931](#) [8808-1511-001](#) [9049-9513-000](#) [9074-9513-000](#) [PL11C-026](#) [PL40-36](#) [9408-1113-000](#) [980-](#)
[8666-005](#) [11 SMA-50-2-6 / 111 NE](#) [11 SMA-50-3-6 / 111 NE](#) [1-201144-1](#) [120919](#) [R107003010W](#) [R112186000](#) [R113053000W](#) [R113082097](#)
[R113236000](#) [R114083000](#) [R114670000W](#) [R123415000W](#) [R124076320](#) [R124076450](#) [R124175123](#) [R125075000W](#) [R125075001](#)
[R125172000W](#) [R125415030](#) [R141007161](#)