

SMPM TO 65 GHz

SMPM Cable Assemblies

RF047-A, RF086, RF23C



VSWR

RF047-A: 1.40 max.
RF086: 1.40 max.
RF23C: 1.40 max.

SERIES	END 1 CONNECTOR	END 2 CONNECTOR	OVERALL LENGTH
RF047-A = (1.2 mm) .047" overshield DIA 29 AWG millimeter cable RF086 = (2.18 mm) .086" overshield DIA 23 AWG millimeter cable RF23C = MWC-2350CU-01 millimeter wave cable with copper foil shield	-MOSP = SMPM Straight Plug, Full Detent -MOSJ = SMPM Straight Jack -MORJ = SMPM Right-angle Jack (RF047-A only) -MOBJ = SMPM Straight Bulkhead Jack (RF047-A only)	-“XXXX” = Overall Length in millimeters -0100 (0100 mm) 3.94" minimum (RF047-A, RF086) -0152 (0152 mm) 5.984" minimum (RF23C)	

ALSO AVAILABLE

1.85 mm, 2.40 mm, 2.92 mm = RF086
 1.35 mm, 1.85 mm, 2.40 mm,
 2.92 mm = RF047-A
 2.40 mm, 2.92 mm = RF23C

SMPM Cable Connectors

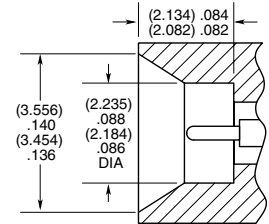
PRFM0



CONNECTORS FOR INDUSTRY STANDARD CABLES	
PRFM0-J-C-EE-047A-BD	.047 Temp-Flex, low loss flexible, 29 AWG
PRFM0-J-C-EE-085-BD	Harbour SS405, flexible alternative to RG 405
PRFM0-J-C-EE-047A-RD	.047 Temp-Flex, low loss flexible, 29 AWG
PRFM0-J-C-EE-086-SD	.086 Temp-Flex, low loss flexible
PRFM0-J-C-EE-047B-SD	.047 Temp-Flex, low loss flexible, 28 AWG
PRFM0-P-C-HG-047A-SD	.047 Temp-Flex, low loss flexible, 29 AWG
PRFM0-J-C-HG-047A-SD	.047 Temp-Flex, low loss flexible, 29 AWG

P-C = Cable Plug
 J-C = Cable Jack
 EE = Plating (50 μ" Gold center contact, & outer contact)
 HG = Plating (30 μ" Gold center contact, 10 μ" Gold outer contact)
 SD = Straight, Direct Solder
 BD = Bulkhead, Direct Solder
 RD = Right-angle, Direct Solder

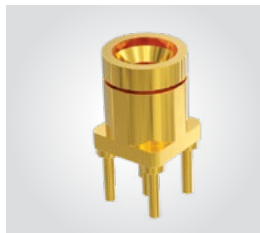
INTERFACE STANDARD (CATCHERS MITT)



SMPM Board Connectors

SMPM-SM, SMPM-TH, SMPM-RA

Cable Mates:
 RF047-A, RF086, RF23C

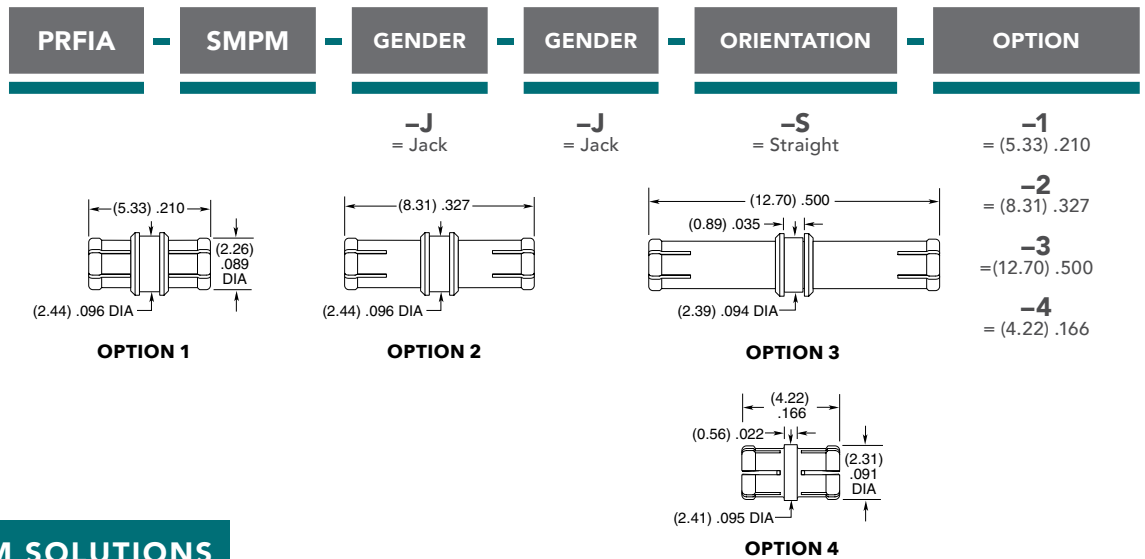


SMPM	GENDER	TYPE	PLATING	ORIENTATION	TERMINATION	1
	-PF = Full Detent -PS = Smooth Bore -PC = Catchers Mitt (-ST-TH only)	-P = PCB Mount	-HG = 30 μ" (0.76 μm) Gold center contact, 10 μ" (0.25 μm) Gold outer contact (-ST only) -HF = 30 μ" (0.76 μm) Gold center contact, 3 μ" (0.08 μm) Gold outer contact (-RA only) -EE = 50 μ" (1.27 μm) Gold center contact and outer body (-SM only)	-ST = Straight -RA = Right-angle (-TH required)	-EM = Drop-in Edge Mount (-ST only) -TH = Through-hole -SM = Surface Mount (-ST only)	
	<p>-ST-SM-1</p>	<p>-ST-EM-1</p>	<p>-ST-TH-1</p>	<p>-RA-TH-1</p>		

SMPM TO 65 GHz

SMPM Bullet Adaptor PRFIA

Mates With:
SMPM, GPPB



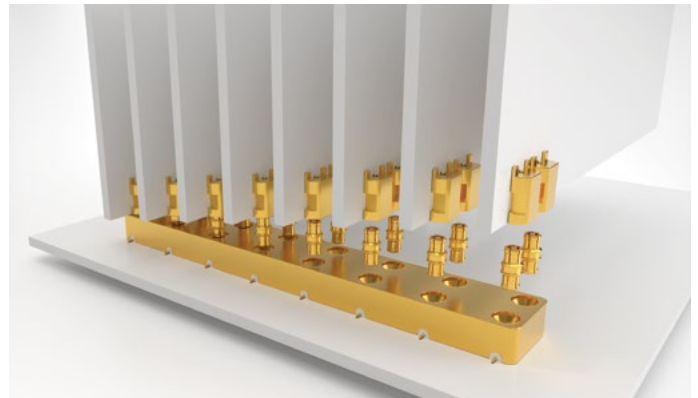
GANGED SMPM SOLUTIONS

BOARD-TO-BOARD GANGED, MULTI-POSITION SMPM BLOCKS

Series: GPPB
Mates with: PRFIA

FEATURES

- High-density, space-saving design
- 8.33 mm (.328") pitch (3.56 mm (.140") pitch in development)
- Push-on interface with varying retention forces
- Bullet adaptors enable blind mate applications accommodating axial and radial misalignment
- Board height options: 4.22 mm (.166"), 5.33 mm (.210"), 8.31 mm (.327"), 12.70 mm (.500")

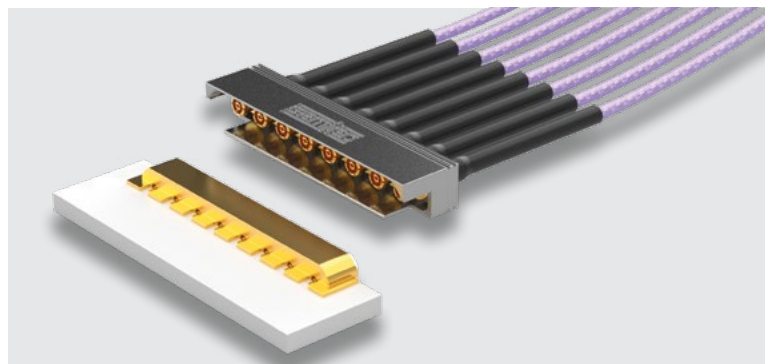


CABLE-TO-BOARD GANGED, MULTI-POSITION SMPM CABLE ASSEMBLY

Cable Assembly: GC47
Board Mate: GPPC

FEATURES

- High-density, space-saving design
- Pitch: 3.56 mm (.140")
- Push-on interface for quick installation
- .047 low-loss flexible microwave/millimeter wave cable



Applications include: 5G wireless, mmWave, military/defense, telecom, radar, test & measurement, applications that are space limited and require high operating frequency

X-ON Electronics

Largest Supplier of Electrical and Electronic Components

Click to view similar products for [RF Connectors / Coaxial Connectors](#) category:

Click to view products by [Samtec](#) manufacturer:

Other Similar products are found below :

[8915-1511-000](#) [89674-0827](#) [6001-7071-019](#) [6002-7051-003](#) [6059674-1](#) [619550-1](#) [630059-000](#) [M39030/3-01N](#) [6769](#) [CX050L2AQ](#) [7002-1541-010](#) [7002-1542-011](#) [7002-1572-002](#) [7003-1542-011](#) [7004-1512-000](#) [7009-1511-004](#) [7010-1511-000](#) [7029-1511-060](#) [7101-1541-010](#) [7101-1571-002](#) [7145-1521-002](#) [7203-1571-003](#) [7209-1511-011](#) [7210-1511-015](#) [7210-1511-019](#) [73137-5015](#) [73216-2241](#) [73404-2300](#) [7405-1521-005](#) [7405-1521-802](#) [8527](#) [8547](#) [FS11V](#) [9049-9513-000](#) [9074-9513-000](#) [9101-9573-002](#) [910A205F](#) [9130-9573-002](#) [PL11SC-026](#) [PL375-33](#) [PL40-5](#) [PL74C-221](#) [PL75MC-217](#) [PL803-7](#) [980-8666-005](#) [1200690078](#) [1-201144-1](#) [R107003010W](#) [R110A172100](#) [R112186000](#)