

(2.54 mm) .100"

SSM SERIES

# TIGER CLAW™ SURFACE MOUNT SOCKET

**Mates with:**

TSW, MTSW, TST, TSS, ZST, ZSS, DW, EW, ZW, TSM, HMTSW, HTSW, TSSH, BST, HTSS, TLW, MTLW

**SPECIFICATIONS**

For complete specifications and recommended PCB layouts see [www.samtec.com?SSM](http://www.samtec.com?SSM)

**Insulator Material:** Black Liquid Crystal Polymer  
**Contact Material:** Phosphor Bronze  
**Plating:** Au or Sn over 50 µ" (1.27 µm) Ni

**Current Rating (SSM/TSW):** 5.2 A per pin (2 pins powered)  
**Voltage Rating:** 405 VAC / 572 VDC

**Operating Temp Range:** -55 °C to +125 °C with Gold  
 -55 °C to +105 °C with Tin

**Insertion Depth:** SV/DV is (4.34 mm) .171" to (7.24 mm) .285" or pass-through from top; (5.56 mm) .219" plus board thickness minimum from bottom; SH/DH is (4.34 mm) .171" to (6.35 mm) .250"

**Normal Force:** 125 grams (1.21 N) average  
**RoHS Compliant:** Yes

**PROCESSING**

**Lead-Free Solderable:** Yes

**-DH Coplanarity:** Less than 28 positions (0.15 mm) .006" max\*  
 More than 27 positions (0.20 mm) .008" max\*  
**-SH, -SV, -DV Coplanarity:** (0.15 mm) .006" max\*  
 \*(.004" stencil solution may be available; contact [IPG@samtec.com](mailto:IPG@samtec.com))

**RECOGNITIONS**

For complete scope of recognitions see [www.samtec.com/quality](http://www.samtec.com/quality)



**ALSO AVAILABLE**  
(MOQ Required)

- Alignment pin

**Note:** Some lengths, styles and options are non-standard, non-returnable.

SSM	NO. PINS PER ROW	PLATING OPTION	ROW OPTION	OTHER OPTION
02 thru 36 (-SV, -SH, -DH)	1	-F = Gold flash on contact, Matte Tin on tail	-BE = Bottom Entry (-DV & -SV only)	-M = Metal Pick & Place Pad (5 positions min.) -DV only
02 thru 40 (-DV)		-L = 10 µ" (0.25 µm) Gold on contact, Matte Tin on tail	-LC = Locking Clip (-DV & -SV only) Contact Samtec for -DH & -SH	-K = (6.50 mm) .256" DIA Polyimide film Pick & Place Pad (2 positions min.) -DV & -SV only
		-S = 30 µ" (0.76 µm) Gold on contact, Matte Tin on tail	-"XXX" = Polarized Position (-BE not available)	-P = Plastic Pick & Place Pad (-DV & -SV only) (6 positions min. Contact Samtec for availability on smaller positions)
			-TR = Tape & Reel Packaging (29 positions max.)	



**HIGH-SPEED CHANNEL PERFORMANCE**

Rating based on Samtec reference channel. For full SI performance data visit [Samtec.com](http://Samtec.com) or contact [SIG@samtec.com](mailto:SIG@samtec.com)

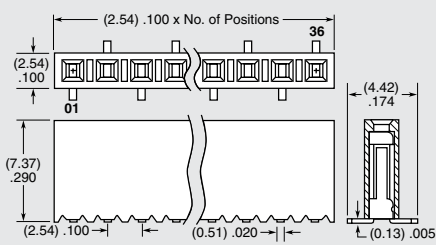
8 Gbps

**APPLICATIONS**

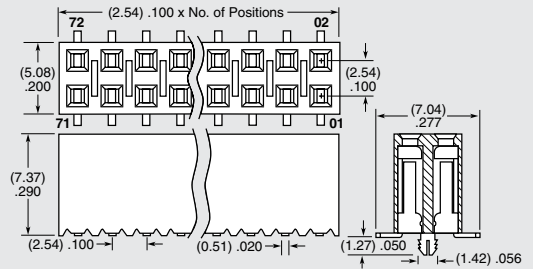
TSM SSM TSSH

HORIZONTAL

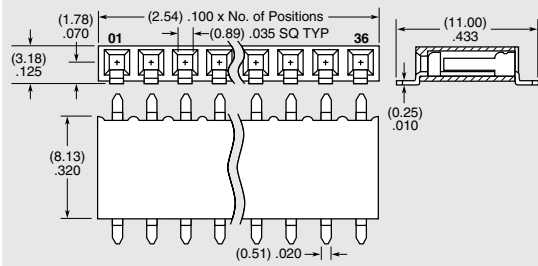
**-SV**  
= Single Row Vertical Pin



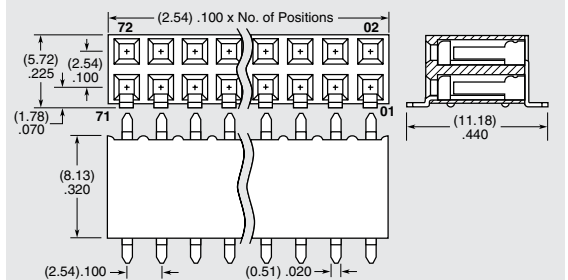
**-DV**  
= Double Row Vertical Pin



**-SH**  
= Single Row Horizontal Pin



**-DH**  
= Double Row Horizontal Pin



Due to technical progress, all designs, specifications and components are subject to change without notice.

[WWW.SAMTEC.COM](http://WWW.SAMTEC.COM)

All parts within this catalog are built to Samtec's specifications. Customer specific requirements must be approved by Samtec and identified in a Samtec customer-specific drawing to apply.

## X-ON Electronics

Largest Supplier of Electrical and Electronic Components

*Click to view similar products for [Headers & Wire Housings](#) category:*

*Click to view products by [Samtec](#) manufacturer:*

Other Similar products are found below :

[95000-104TRLF](#) [10135584-644402LF](#) [DF62W-EP2022PCA](#) [95000-106TRLF](#) [DF62W-2022SCA](#) [DF62W-EP2022PC](#) [2203348](#) [DF62W-2022SC](#) [1084018](#) [1029039](#) [1084017](#) [802-10-012-10-002000](#) [1112640](#) [1112639](#) [000-34000](#) [0009482033](#) [0009507031](#) [57102-S06-03LF](#) [57202-S52-04LF](#) [PCN6-15S-2.5E](#) [0039019024](#) [58102-G61-06LF](#) [582553-1](#) [0009485154](#) [0009508121](#) [0022285053](#) [0050291907](#) [018731A](#) [LY20-4P-DT1-P1E-BR](#) [02.125.8002.8](#) [60101931](#) [60598-1 \(Cut Strip\)](#) [M1625-3R/100](#) [61062-3](#) [61082-181009](#) [636-1427](#) [638009-1](#) [641938-9](#) [641991-4](#) [644168-1](#) [647662-1](#) [65039-019ELF](#) [65817-002LF](#) [65817-015LF](#) [65863-015LF](#) [66207-023LF](#) [67016-026LF](#) [67046-001LF](#) [67095-007LF](#) [67230-005LF](#)