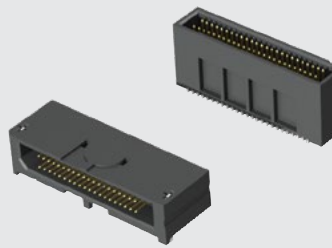
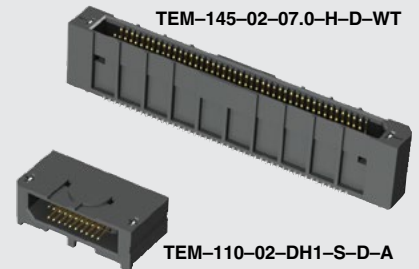




TEMS-125-02-03.0-H-D



TEM-145-02-07.0-H-D-WT



TEM-120-02-DH1-S-D-A

TEM-110-02-DH1-S-D-A

TEM, TEMS, TEM-DH SERIES

(0.80 mm) .0315"

# MICRO TIGER EYE™ HEADER

TEM, TEM-DH Mates with:  
SEM, SEML  
TEMS Mates with:  
SEMS

## SPECIFICATIONS

For complete specifications and recommended PCB layouts see [www.samtec.com?TEM](http://www.samtec.com?TEM) or [www.samtec.com?TEMS](http://www.samtec.com?TEMS)

**Insulator Material:**  
Black Liquid Crystal Polymer  
**Terminal Material:**  
Phosphor Bronze

**Plating:**  
Au or Sn over  
50 μm (1.27 μm) Ni  
**Current Rating:**  
2.9 A per pin  
(2 pins powered)  
**Voltage Rating:**  
235 VAC/330 VDC  
**Operating Temp Range:**  
-55 °C to +125 °C

**RoHS Compliant:**  
Yes

## PROCESSING

**Lead-Free Solderable:**  
Yes  
**SMT Lead Coplanarity:**  
(0.10 mm) .004" max

## RECOGNITIONS

For complete scope of recognitions see [www.samtec.com/quality](http://www.samtec.com/quality)



## OTHER SOLUTIONS

- Latching option: See TEM-L1 in Discrete Wire Cable section.
- Board Stacking: See SFM, TFM Series
- Cable Assemblies: See SFSD, TFSD, SESDT Series

## ALSO AVAILABLE (MOQ Required)

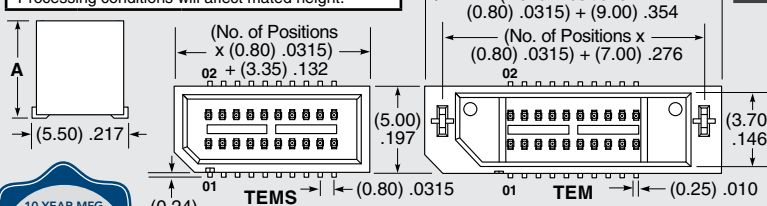
- Other sizes
- Other platings

**Note:**  
Some sizes, styles and options are non-standard, non-returnable.

TYPE STRIP	1	NO. OF POSITIONS	02	STACK HEIGHT	PLATING OPTION	D	OPTION	OTHER OPTION
TEM = Tiger Eye™ Strip		05, 10, 15, 20, 25 (Per Row)		-03.0 = 6 mm Stack Height	-FG = Gold Flash		-A = Alignment Pin (Not available with -LC or -WT)	-K = (5.50 mm) .217" DIA Polyimide film Pick & Place Pad (Required for TEMS)
TEMS = Tiger Eye™ Slim Strip		30, 35, 40, 45, 50 (Per Row) (TEM only) (Standard sizes)		-04.0 = 7 mm Stack Height	-G = 10 μm (0.25 μm) Gold on contact, Gold Flash on tail		-LC = Locking Clip (Not available with -A or -WT) (Manual placement required)	-TR = Tape & Reel (Required for TEMS)
				-07.0 = 10 mm Stack Height	-H = 30 μm (0.76 μm) Gold on contact, Gold Flash on tail		-WT = Weld Tab (Not available with -A or -LC)	

STACK HEIGHT	A	MATED HEIGHT* (WHEN MATED WITH SEM/SEMS)
-03.0	(6.610) .2209	6 mm
-04.0	(6.610) .2602	7 mm
-07.0	(9.610) .3783	10 mm

\*Processing conditions will affect mated height.



**HIGH-SPEED CHANNEL PERFORMANCE**

Rating based on Samtec reference channel. For full SI performance data visit [Samtec.com](http://Samtec.com) or contact [SIG@samtec.com](mailto:SIG@samtec.com)

**8**  
Gbps

**POWER/SIGNAL APPLICATION**

Compatible with UMPT/JUMPS for flexible two-piece power/signal solutions

TEM	1	NO. OF POSITIONS	02	DH1	PLATING OPTION	D	OPTION
		10, 15, 20, 25, 30, 35, 40, 45, 50 (Per Row) (Standard sizes)			-F = Gold Flash on contact, Matte Tin on tail		-A = Alignment Pin
					-L = 10 μm (0.25 μm) Gold on contact, Matte Tin on tail		
					-S = 30 μm (0.76 μm) Gold on contact, Matte Tin on tail		

TEM: (No. of Positions x (0.80) .0315) + (9.00) .354  
TEMS: (No. of Positions x (0.80) .0315) + (4.00) .1575  
TEM: (No. of Positions x (0.80) .0315) + (7.00) .276

Due to technical progress, all designs, specifications and components are subject to change without notice.

## X-ON Electronics

Largest Supplier of Electrical and Electronic Components

*Click to view similar products for [Board to Board & Mezzanine Connectors](#) category:*

*Click to view products by [Samtec](#) manufacturer:*

Other Similar products are found below :

[10135583-642402LF](#) [89885-310LF](#) [589158040000018](#) [6-1393048-0](#) [68683-613](#) [MDF7-12DP-2.54DSA](#) [MDF7-18P-2.54DSA\(01\)](#) [MDF7-20DP-2.54DSA](#) [MDF7-26D-2.54DSA\(55\)](#) [MDF7-3P-2.54DSA\(01\)](#) [MDF7B-3P-2.54DSA\(55\)](#) [MDF7C-11P-2.54DSA\(55\)](#) [MDF7C-18P-2.54DSA\(55\)](#) [MDF7C-5P-2.54DSA\(01\)](#) [MDF7P-5P-2.54DSA\(55\)](#) [75234-0516](#) [FCN-230C068-11](#) [FCN-268F012-G/BD](#) [FCN-268F036-G/BD](#) [FCN-268M012-G/0D](#) [FCN-268M024-G/1D](#) [FCN-360C008-C](#) [FCN-360C040-C](#) [FCN-723J004/1](#) [MIS-048-01-F-D-DP-K](#) [832-10-034-10-001000](#) [93696-325LF](#) [11828-1FA](#) [AXK630345P](#) [18097-0013](#) [ICA-328STT](#) [2007042-2](#) [304400-2](#) [FCN-214Q030-G/0](#) [FCN-215Q040-G/0](#) [FCN-230C068-ESA](#) [FCN-234P048-G/0](#) [FCN-235D050-G/C](#) [FCN-360A3](#) [FCN-360C040-B](#) [210-93-314-41-105000](#) [2-22603-0](#) [379-064-521-202](#) [MDF7-12P-2.54DSA\(01\)](#) [MDF7-16P-2.54DS\(56\)](#) [MDF7-40DP-2.54DSA\(55\)](#) [MDF7-8P-2.54DSA\(55\)](#) [MDF7B-16P-2.54DSA\(55\)](#) [AXG720047](#) [5031084030](#)