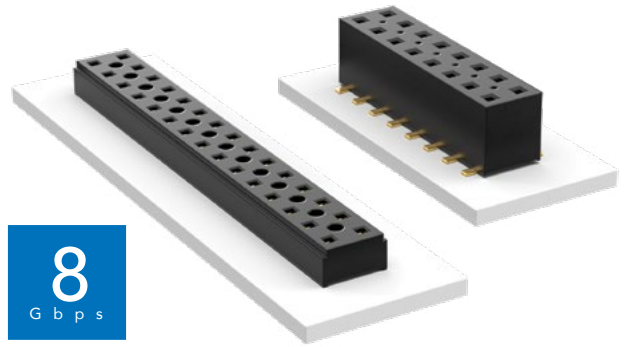


COST-EFFECTIVE & DUAL WIPE SOCKETS

(2.00 mm) .0787" PITCH • TLE/CLT SERIES



TLE

Mates:
TMMH, TMM, MTMM,
MMT, TW, LTMM, ZLTMM,
TCMD, TSH

CLT

Mates:
TMM, TMMH, MTMM,
MMT, TW, TSH

SPECIFICATIONS

TLE

Insulator Material:
Black Liquid Crystal Polymer
Contact Material:
Phosphor Bronze
Plating:
Au over 50 μ" (1.27 μm) Ni
Current Rating (TLE/TMMH):
3.2 A per pin
(2 pins powered)
Operating Temp Range:
-55 °C to +125 °C
Insertion Depth:
(2.08 mm) .082" to
(4.37 mm) .172" with
(0.38 mm) .015" wipe,
pass-through, or
(3.35 mm) .132" min
for bottom entry

CLT

Same as TLE except:
Plating:
Sn or Au over 50 μ" (1.27 μm) Ni
Current Rating (TMMH/CLT):
4.1 A per pin
(2 pins powered)
Insertion Depth:
Top Entry=
(1.40 mm) .055" minimum
Bottom Entry=
(2.57 mm) .101" minimum
(add board thickness for
correct post OAL)
Max Cycles:
100 with 10 μ" (0.25 μm) Au

PROCESSING

TLE

Lead-Free Solderable:
Yes
SMT Lead Coplanarity:
(0.10 mm) .004" max (02-26)
(0.15 mm) .006" max (27-50)*
*(.004" stencil solution
may be available; contact
ipg@samtec.com)
CLT
Same as TLE except:
SMT Lead Coplanarity:
(0.10 mm) .004" max (02-25)
(0.15 mm) .006" max (26-34)*
(0.20 mm) .008" max (35-50)*
*(.004" stencil solution
may be available; contact
ipg@samtec.com)

Note:
Some lengths, styles and
options are non-standard,
non-returnable.

| | | | | | | |
|-----|-----|------------------|------|----------------|------|--------|
| TLE | - 1 | NO. PINS PER ROW | - 01 | PLATING OPTION | - DV | OPTION |
|-----|-----|------------------|------|----------------|------|--------|



02 thru 50

-G
= 10 μ" (0.25 μm)
Gold

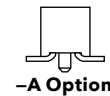
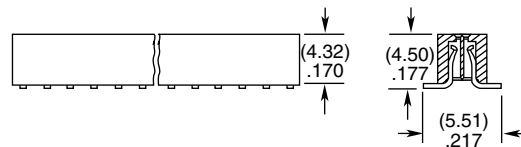
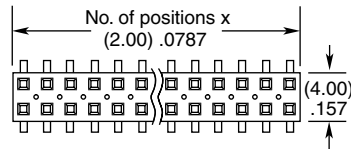
-A
= Alignment Pin
(3 positions minimum)

-K
= (5.00 mm) .197" DIA
Polyimide Film Pick & Place Pad
(3 positions minimum)

-P
= Metal Pick & Place Pad
(4 positions minimum)

-TR
= Tape & Reel Packaging
(2-37 positions only)

-FR
= Full Reel Tape & Reel
(must order maximum
quantity per reel; contact
Samtec for quantity breaks)
(2-37 positions only)



| | | | | | | |
|-----|-----|------------------|------------|----------------|-----|---------------|
| CLT | - 1 | NO. PINS PER ROW | LEAD STYLE | PLATING OPTION | - D | OTHER OPTIONS |
|-----|-----|------------------|------------|----------------|-----|---------------|



02 thru 50

-01
= Through-hole

-F
= Gold flash
on contact,
Matte Tin on tail

All options require
Style -02

-BE
= Bottom Entry
(Required for bottom
entry applications)

-A
= Alignment Pin
(3 positions minimum)
Metal or plastic at
Samtec's discretion

-K
= (5.00 mm) .197" DIA
Polyimide Film
Pick & Place Pad
(04 thru 50 only)

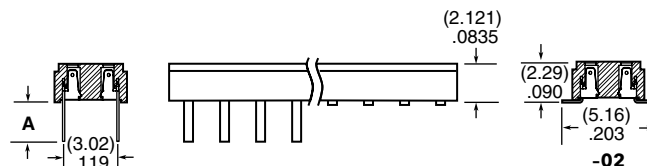
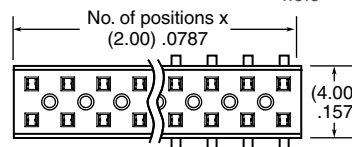
-P
= Pick & Place Pad
(4 positions minimum)
(Not always necessary
for auto placement.)

-TR
= Tape & Reel
(36 positions max)

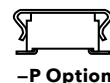
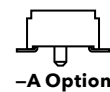
-FR
= Full Reel Tape & Reel
(must order maximum
quantity per reel;
contact Samtec for
quantity breaks)
(36 positions max)

ALSO AVAILABLE

Other Platings
(MOQ Required)



| LEAD STYLE | A |
|------------|-------------|
| -01 | (2.16) .085 |
| -03 | (2.95) .116 |



X-ON Electronics

Largest Supplier of Electrical and Electronic Components

Click to view similar products for [Headers & Wire Housings](#) category:

Click to view products by [Samtec](#) manufacturer:

Other Similar products are found below :

[892-18-020-10-001101](#) [58102-G61-06LF](#) [582553-1](#) [0009485154](#) [009176003701906](#) [0050291907](#) [LY20-4P-DT1-P1E-BR](#) [02.125.8002.8](#)
[609-3404](#) [61062-3](#) [61082-181009](#) [622-3653LF](#) [63453-116](#) [636-1030](#) [636-1427](#) [636-3427](#) [636-4007](#) [641938-9](#) [641991-4](#) [644827-2](#) [65817-](#)
[010LF](#) [65817-015LF](#) [65863-015LF](#) [66207-023LF](#) [67095-007LF](#) [67601157](#) [68645-018](#) [68648-049](#) [70.362.1628.0](#) [70-4210](#) [70-4226B](#) [70-](#)
[4853B](#) [707-5020](#) [707-5028](#) [71.350.2428.0](#) [71918-208LF](#) [71961-016LF](#) [733-134](#) [733-162](#) [754199-000](#) [760-3052](#) [787-8014-00](#) [79531-3000](#)
[FCN-360C032-B](#) [FCN-367T-T012/H](#) [FCN-723D010/2](#) [80.063.4001.1](#) [800-90-001-10-001000](#) [800-90-010-10-002000](#) [801-43-002-10-013000](#)