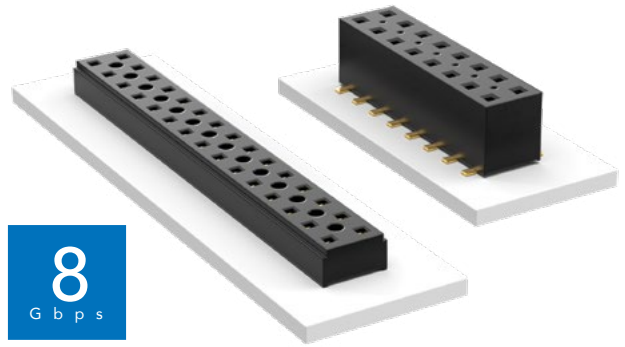


# COST-EFFECTIVE & DUAL WIPE SOCKETS

(2.00 mm) .0787" PITCH • TLE/CLT SERIES



## TLE

**Mates:**  
TMMH, TMM, MTMM,  
MMT, TW, LTMM, ZLTMM,  
TCMD, TSH

## CLT

**Mates:**  
TMM, TMMH, MTMM,  
MMT, TW, TSH

### SPECIFICATIONS

#### TLE

**Insulator Material:**  
Black Liquid Crystal Polymer  
**Contact Material:**  
Phosphor Bronze  
**Plating:**  
Au over 50 μ" (1.27 μm) Ni  
**Current Rating (TLE/TMMH):**  
3.2 A per pin  
(2 pins powered)  
**Operating Temp Range:**  
-55 °C to +125 °C  
**Insertion Depth:**  
(2.08 mm) .082" to  
(4.37 mm) .172" with  
(0.38 mm) .015" wipe,  
pass-through, or  
(3.35 mm) .132" min  
for bottom entry

#### CLT

Same as TLE except:  
**Plating:**  
Sn or Au over 50 μ" (1.27 μm) Ni  
**Current Rating (TMMH/CLT):**  
4.1 A per pin  
(2 pins powered)  
**Insertion Depth:**  
Top Entry=  
(1.40 mm) .055" minimum  
Bottom Entry=  
(2.57 mm) .101" minimum  
(add board thickness for  
correct post OAL)  
**Max Cycles:**  
100 with 10 μ" (0.25 μm) Au

### PROCESSING

#### TLE

**Lead-Free Solderable:**  
Yes  
**SMT Lead Coplanarity:**  
(0.10 mm) .004" max (02-26)  
(0.15 mm) .006" max (27-50)\*  
\*(.004" stencil solution  
may be available; contact  
ipg@samtec.com)

#### CLT

Same as TLE except:  
**SMT Lead Coplanarity:**  
(0.10 mm) .004" max (02-25)  
(0.15 mm) .006" max (26-34)\*  
(0.20 mm) .008" max (35-50)\*  
\*(.004" stencil solution  
may be available; contact  
ipg@samtec.com)

**Note:**  
Some lengths, styles and  
options are non-standard,  
non-returnable.

TLE	-	1	NO. PINS PER ROW	-	01	PLATING OPTION	-	DV	-	OPTION
-----	---	---	------------------	---	----	----------------	---	----	---	--------



02 thru 50

-G  
= 10 μ" (0.25 μm)  
Gold

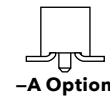
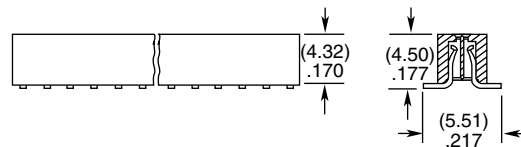
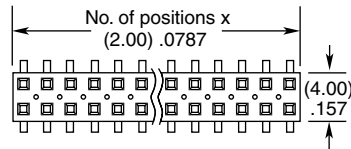
-A  
= Alignment Pin  
(3 positions minimum)

-K  
= (5.00 mm) .197" DIA  
Polyimide Film Pick & Place Pad  
(3 positions minimum)

-P  
= Metal Pick & Place Pad  
(4 positions minimum)

-TR  
= Tape & Reel Packaging  
(2-37 positions only)

-FR  
= Full Reel Tape & Reel  
(must order maximum  
quantity per reel; contact  
Samtec for quantity breaks)  
(2-37 positions only)



CLT	-	1	NO. PINS PER ROW	-	02 thru 50	LEAD STYLE	-	PLATING OPTION	-	D	OTHER OPTIONS
-----	---	---	------------------	---	------------	------------	---	----------------	---	---	---------------



02 thru 50

-01  
= Through-hole

-F  
= Gold flash  
on contact,  
Matte Tin on tail

All options require  
Style -02

-BE  
= Bottom Entry  
(Required for bottom  
entry applications)

-A  
= Alignment Pin  
(3 positions minimum)  
Metal or plastic at  
Samtec's discretion

-K  
= (5.00 mm) .197" DIA  
Polyimide Film  
Pick & Place Pad  
(04 thru 50 only)

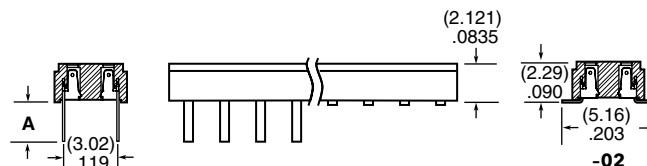
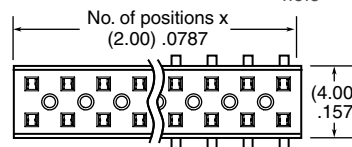
-P  
= Pick & Place Pad  
(4 positions minimum)  
(Not always necessary  
for auto placement.)

-TR  
= Tape & Reel  
(36 positions max)

-FR  
= Full Reel Tape & Reel  
(must order maximum  
quantity per reel;  
contact Samtec for  
quantity breaks)  
(36 positions max)

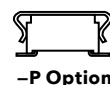
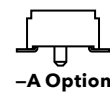
### ALSO AVAILABLE

Other Platings  
(MOQ Required)



-01 or -03

LEAD STYLE	A
-01	(2.16) .085
-03	(2.95) .116



## X-ON Electronics

Largest Supplier of Electrical and Electronic Components

*Click to view similar products for [Headers & Wire Housings](#) category:*

*Click to view products by [Samtec](#) manufacturer:*

Other Similar products are found below :

[892-18-020-10-001101](#) [58102-G61-06LF](#) [582553-1](#) [0009485154](#) [009176003701906](#) [0050291907](#) [LY20-4P-DT1-P1E-BR](#) [02.125.8002.8](#)  
[609-3404](#) [61062-3](#) [61082-181009](#) [622-3653LF](#) [63453-116](#) [636-1030](#) [636-1427](#) [636-3427](#) [636-4007](#) [641938-9](#) [641991-4](#) [644827-2](#) [65817-](#)  
[010LF](#) [65817-015LF](#) [65863-015LF](#) [66207-023LF](#) [67095-007LF](#) [67601157](#) [68645-018](#) [68648-049](#) [70.362.1628.0](#) [70-4210](#) [70-4226B](#) [70-](#)  
[4853B](#) [707-5020](#) [707-5028](#) [71.350.2428.0](#) [71918-208LF](#) [71961-016LF](#) [733-134](#) [733-162](#) [754199-000](#) [760-3052](#) [787-8014-00](#) [79531-3000](#)  
[FCN-360C032-B](#) [FCN-367T-T012/H](#) [FCN-723D010/2](#) [80.063.4001.1](#) [800-90-001-10-001000](#) [800-90-010-10-002000](#) [801-43-002-10-013000](#)