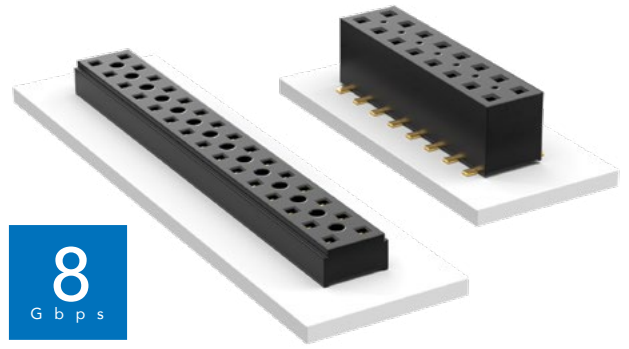


COST-EFFECTIVE & DUAL WIPE SOCKETS

(2.00 mm) .0787" PITCH • TLE/CLT SERIES



TLE
Mates:
 TMMH, TMM, MTMM,
 MMT, TW, LTMM, ZLTMM,
 TCMD, TSH

CLT
Mates:
 TMM, TMMH, MTMM,
 MMT, TW, TSH

SPECIFICATIONS

TLE
Insulator Material:
 Black Liquid Crystal Polymer
Contact Material:
 Phosphor Bronze
Plating:
 Au over 50 μ" (1.27 μm) Ni
Current Rating (TLE/TMMH):
 3.2 A per pin
 (2 pins powered)
Operating Temp Range:
 -55 °C to +125 °C
Insertion Depth:
 (2.08 mm) .082" to
 (4.37 mm) .172" with
 (0.38 mm) .015" wipe,
 pass-through, or
 (3.35 mm) .132" min
 for bottom entry

CLT
 Same as TLE except:
Plating:
 Sn or Au over 50 μ" (1.27 μm) Ni
Current Rating (TMMH/CLT):
 4.1 A per pin
 (2 pins powered)
Insertion Depth:
 Top Entry=
 (1.40 mm) .055" minimum
 Bottom Entry=
 (2.57 mm) .101" minimum
 (add board thickness for
 correct post OAL)
Max Cycles:
 100 with 10 μ" (0.25 μm) Au

PROCESSING

TLE
Lead-Free Solderable:
 Yes
SMT Lead Coplanarity:
 (0.10 mm) .004" max (02-26)
 (0.15 mm) .006" max (27-50)*
 *(.004" stencil solution
 may be available; contact
 ipg@samtec.com)
CLT
 Same as TLE except:
SMT Lead Coplanarity:
 (0.10 mm) .004" max (02-25)
 (0.15 mm) .006" max (26-34)*
 (0.20 mm) .008" max (35-50)*
 *(.004" stencil solution
 may be available; contact
 ipg@samtec.com)

Note:
 Some lengths, styles and
 options are non-standard,
 non-returnable.

TLE	- 1	NO. PINS PER ROW	- 01	PLATING OPTION	- DV	OPTION
TIGER BEAM CONTACT		02 thru 50		-G = 10 μ" (0.25 μm) Gold		-A = Alignment Pin (3 positions minimum) -K = (5.00 mm) .197" DIA Polyimide Film Pick & Place Pad (3 positions minimum) -P = Metal Pick & Place Pad (4 positions minimum) -TR = Tape & Reel Packaging (2-37 positions only) -FR = Full Reel Tape & Reel (must order maximum quantity per reel; contact Samtec for quantity breaks) (2-37 positions only)

CLT	- 1	NO. PINS PER ROW	LEAD STYLE	PLATING OPTION	- D	OTHER OPTIONS
TIGER CLAW CONTACT		02 thru 50		-01 = Through-hole -02 = Surface Mount -03 = Through-hole	-F = Gold flash on contact, Matte Tin on tail -L = 10 μ" (0.25 μm) Gold on contact, Matte Tin on tail -G = 10 μ" (0.25 μm) Gold on contact, Gold flash on tail	All options require Style -02 -BE = Bottom Entry (Required for bottom entry applications) -A = Alignment Pin (3 positions minimum) Metal or plastic at Samtec's discretion -K = (5.00 mm) .197" DIA Polyimide Film Pick & Place Pad (04 thru 50 only) -P = Pick & Place Pad (4 positions minimum) (Not always necessary for auto placement.) -TR = Tape & Reel (36 positions max) -FR = Full Reel Tape & Reel (must order maximum quantity per reel; contact Samtec for quantity breaks) (36 positions max)

ALSO AVAILABLE
 Other Platings
 (MOQ Required)

LEAD STYLE	A
-01	(2.16) .085
-03	(2.95) .116

X-ON Electronics

Largest Supplier of Electrical and Electronic Components

Click to view similar products for [Headers & Wire Housings](#) category:

Click to view products by [Samtec](#) manufacturer:

Other Similar products are found below :

[892-18-020-10-001101](#) [58102-G61-06LF](#) [582553-1](#) [0009485154](#) [009176003701906](#) [0050291907](#) [LY20-4P-DT1-P1E-BR](#) [02.125.8002.8](#)
[609-3404](#) [61062-3](#) [61082-181009](#) [622-3653LF](#) [63453-116](#) [636-1030](#) [636-1427](#) [636-3427](#) [636-4007](#) [641938-9](#) [641991-4](#) [644827-2](#) [65817-](#)
[010LF](#) [65817-015LF](#) [65863-015LF](#) [66207-023LF](#) [67095-007LF](#) [67601157](#) [68645-018](#) [68648-049](#) [70.362.1628.0](#) [70-4210](#) [70-4226B](#) [70-](#)
[4853B](#) [707-5020](#) [707-5028](#) [71.350.2428.0](#) [71918-208LF](#) [71961-016LF](#) [733-134](#) [733-162](#) [754199-000](#) [760-3052](#) [787-8014-00](#) [79531-3000](#)
[FCN-360C032-B](#) [FCN-367T-T012/H](#) [FCN-723D010/2](#) [80.063.4001.1](#) [800-90-001-10-001000](#) [800-90-010-10-002000](#) [801-43-002-10-013000](#)