

REVISION BK

DO NOT SCALE FROM THIS PRINT

NOTES:

- PARTS MAY BE CUT TO POSITION.
- MEASURED AT BEND RADIUS, NOT AT END OF PIN.
- TUBE ONLY -05 THROUGH -50 POSITIONS.
- GOLD PLATING TO BE ON POST, TIN PLATING ON TAIL.
- ⊙ REPRESENTS A CRITICAL DIMENSION.
- MINIMUM PUSHOUT FORCE: 1.0 LB.
- SURFACE MOUNT TAILS TO BE SHEARED TO DIMENSION ON STYLE -05 ONLY.
- MUST USE CARBIDE BLADES.**
- MAX. CUT FLASH: .020 [.51]
FLASH NOT TO BE ON SURFACE MOUNT SIDE.

TMMH-1XX-XX-XX-DV-XXX-XXX

No OF POS
-02 THRU -50
(PER ROW)

LEAD STYLE
-01: .126 [3.20]
(USE T-1S13-07-XX-2)
-04: .075 [1.91]
(USE T-1S13-04-XX-2)
-05: .085 [1.65] MIN
(USE T-1S13-20-XX-2)

PLATING

- L: LIGHT SELECTIVE GOLD (USE T-1S13-XX-L-2)
- F: FLASH SELECTIVE GOLD (USE T-1S13-XX-F-2)
- S: SELECTIVE GOLD (USE T-1S13-XX-S-2)
- G: GOLD (USE T-1S13-XX-G-2)
- T: TIN (USE T-1S13-XX-T-2)
- H: HEAVY GOLD (USE T-1S13-XX-H-2)
- TM: MATTE TIN (USE T-1S13-XX-T-2)
- LM: LIGHT SELECTIVE GOLD/MATTE TIN TAIL (USE T-1S13-XX-L-2)
- SM: SELECTIVE GOLD/MATTE TIN TAIL (USE T-1S13-XX-S-2)
- FM: FLASH SELECTIVE GOLD/MATTE TIN TAIL (USE T-1S13-XX-F-2)

UNLESS OTHERWISE NOTED

DIMENSIONS ARE IN INCHES TOLERANCES ARE:

ONE PLACE DECIMALS ±.1[2.5] THREE PLACE DECIMALS ±.005[.13]
TWO PLACE DECIMALS ±.01[.3] FOUR PLACE DECIMALS ±.0020[.051]

ANGLES ± 2°

TITLE: 2mm x 2mm TERMINAL STRIP ASSEMBLY

DWG NO: TMMH-1XX-XX-XX-DV-XXX-XXX

SHEET 1 OF 3

STYLE	"A"	"B"	TERMINAL	"L"
-01	.126 [3.20]	.101 [2.57]	T-1S13-07-XX-2	.302 [7.67]
-04	.075 [1.91]	.050 [1.27]	T-1S13-04-XX-2	.255 [6.48]
-05	.085[1.65]	.040 [1.02]	T-1S13-20-XX-2	.323 [8.20]

- POLARIZATION SPECIFY POS -XXX TO BE OMITTED
- OPTIONS **
- M: PICK & PLACE PAD (USE PPP-10) (SEE FIG 3; 5 POS MIN)
 - TR: TAPE & REEL PACKAGING (36 POS. MAX. CONTACT SAMTEC FOR LARGER POSITIONS.)
 - ES: END SHROUDS (SEE FIG. 4, SHT 2, 9 POS MIN)
 - EC: LOCKING CLIP (SEE FIG. 6, SHT. 2, 9 POS MIN) (DO NOT USE WITH -A OR -LC)
 - EP: GUIDE POST (SEE FIG. 9, SHT. 3, 9 POS MIN)
 - EL: BOARD LOCK (SEE FIG. 5, SHT 2, 9 POS MIN)
 - LC: FLEX MOLD LOCKING CLIP (USE LC-09-TM, SEE FIG 2, SHEET 2, 5 POS MIN)
 - A: ALIGNMENT PIN (USE TMMH-50-D-A-XX, SEE FIG 2, SHEET 2) (3 POS MIN)
 - EBC: BOARD LOCK WITH LOCKING CLIP (SEE FIG. 8 SHT. 3, 9 POS MIN) (NOT AVAILABLE WITH -A OR -LC)
 - EPC: GUIDE POST WITH LOCKING CLIP (SEE FIG. 7, SHT. 2, 9 POS MIN) (NOT AVAILABLE WITH -A OR -LC)
- ** ALL OPTIONS EXCEPT THE -EX OPTIONS USE THE TMMC-50-D-X-XX
-EX OPTIONS USE THE TMMH-50-D-X-XX

ROW OPTION
-DV: DOUBLE VERTICAL (USE TMMH-50-D-X)

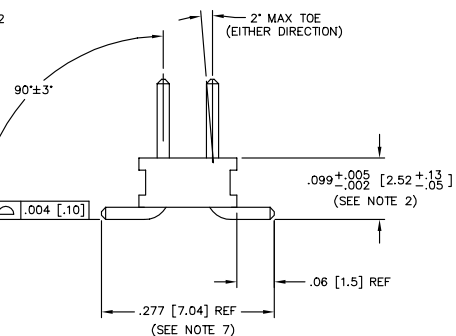
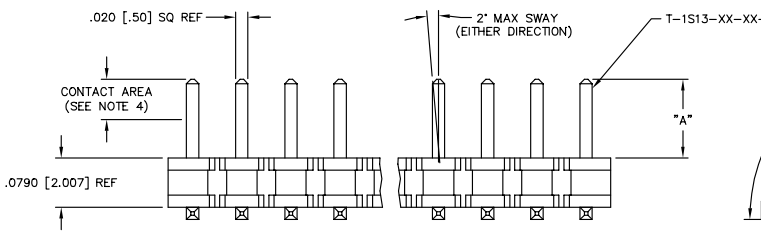
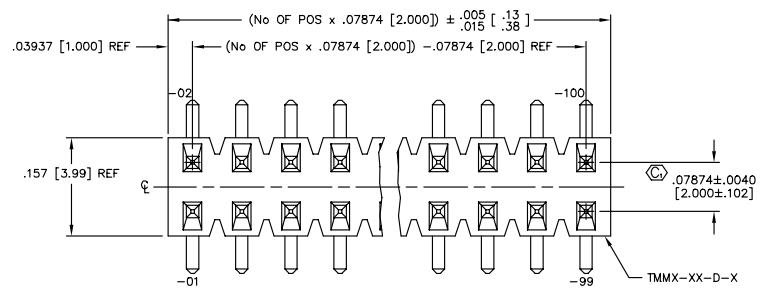


FIG. 1

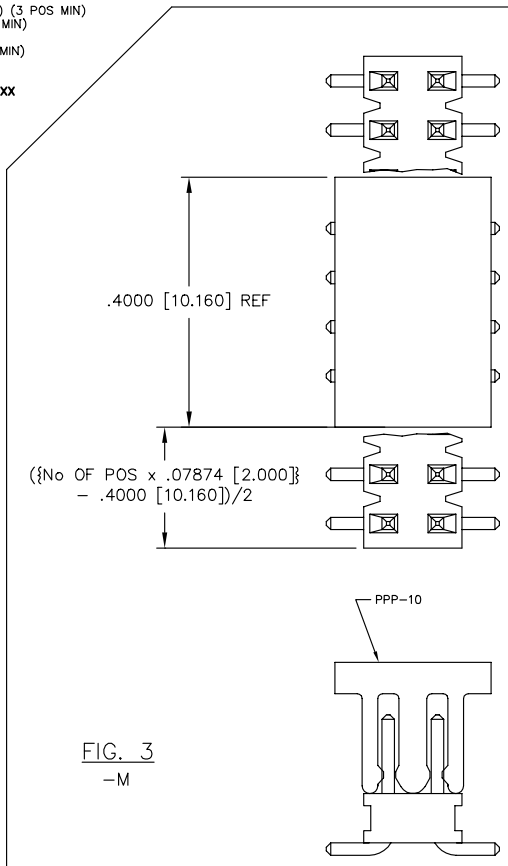
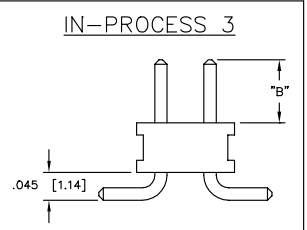
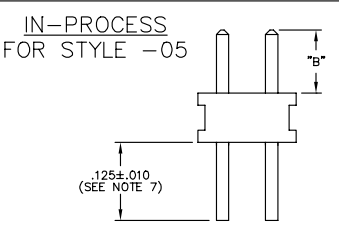
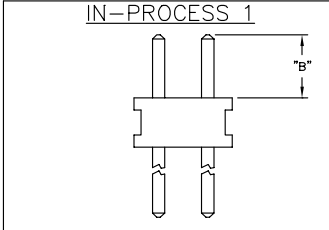


FIG. 3
-M



PROPRIETARY NOTE
THIS DOCUMENT CONTAINS INFORMATION CONFIDENTIAL AND PROPRIETARY TO SAMTEC INC. AND SHALL NOT BE REPRODUCED OR TRANSMITTED IN ANY FORM OR BY ANY MEANS, ELECTRONIC OR MECHANICAL, INCLUDING PHOTOCOPYING, RECORDING, OR BY ANY INFORMATION STORAGE AND RETRIEVAL SYSTEM, WITHOUT THE WRITTEN CONSENT OF SAMTEC INC.

MATERIAL:
BODIES:
LIQUID CRYSTAL POLYMER
COLOR: BLACK
TERMINALS:
PHOSPHOR BRONZE, ALLOY

EXSPROD/ASSEMBLY/2MM TMMH-AM1

samtec

520 PARK EAST BLVD. NEW ALBANY, INDIANA 47150
PHONE (812) 944-6733 P.O. BOX 1147
CODE 55322

MADE BY: PURVIS 10-08-96

TMMH-1XX-XX-XX-DV-XXX-XXX

SHEET 1 OF 3

UNLESS OTHERWISE NOTED
DIMENSIONS ARE IN INCHES TOLERANCES ARE:

ONE PLACE DECIMALS $\pm .1$ [2.5] THREE PLACE DECIMALS $\pm .005$ [13]
TWO PLACE DECIMALS $\pm .01$ [3] FOUR PLACE DECIMALS $\pm .0020$ [51]

ANGLES $\pm 2^\circ$

TITLE:
2mm x 2mm
TERMINAL STRIP ASSEMBLY

DWG NO:
TMMH-1XX-XX-XX-DV-XXX-XXX
SHEET 2 OF 3

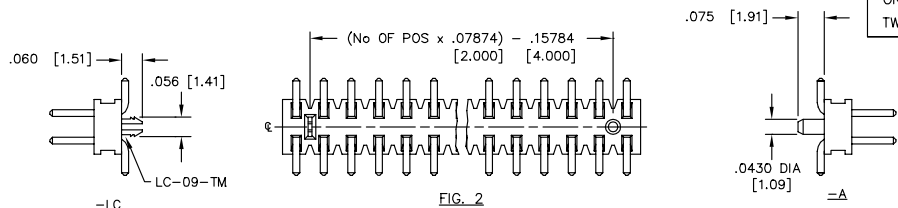


FIG. 2

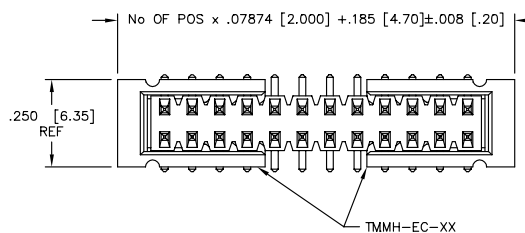


FIG. 6
-EC

STYLE	"A"	"B"	SHROUD
-01	.202 [5.13]	.230 [5.84]	TMMH-EC-01
-04	.149 [3.78]	.177 [4.50]	TMMH-EC-04
-05	.149 [3.78]	.177 [4.50]	TMMH-EC-04

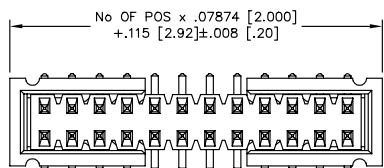
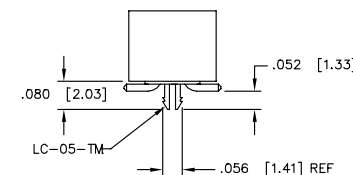
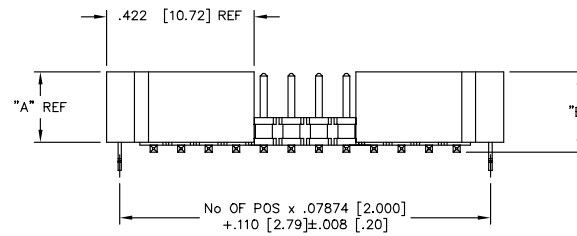


FIG. 4
-ES

STYLE	"A"	"B"	SHROUD
-01	.202 [5.13]	.230 [5.84]	TMMH-ES-01
-04	.149 [3.78]	.177 [4.50]	TMMH-ES-04
-05	.149 [3.78]	.177 [4.50]	TMMH-ES-04

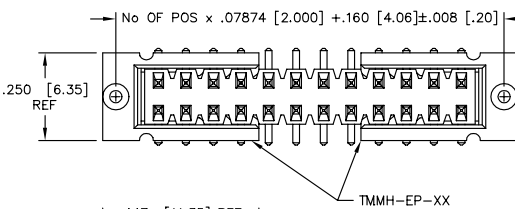
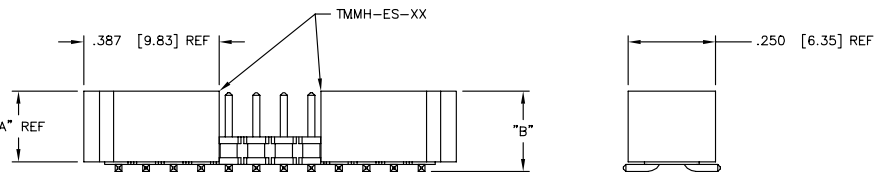


FIG. 7
-EPC

STYLE	"A"	"B"	"C"	SHROUD
-01	.202 [5.13]	.230 [5.84]	.175 [4.45]	TMMH-EP-01
-04	.149 [3.78]	.177 [4.50]	.119 [3.02]	TMMH-EP-04
-05	.149 [3.78]	.177 [4.50]	.119 [3.02]	TMMH-EP-04

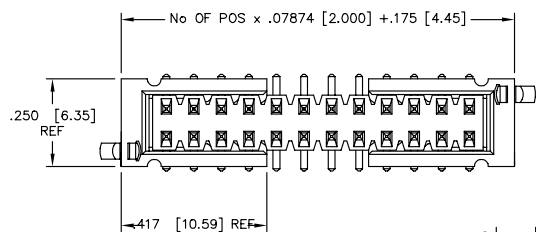
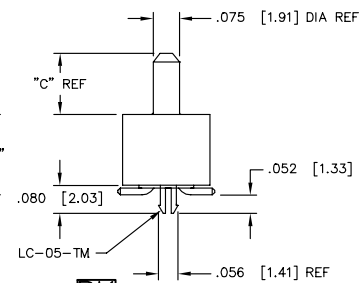
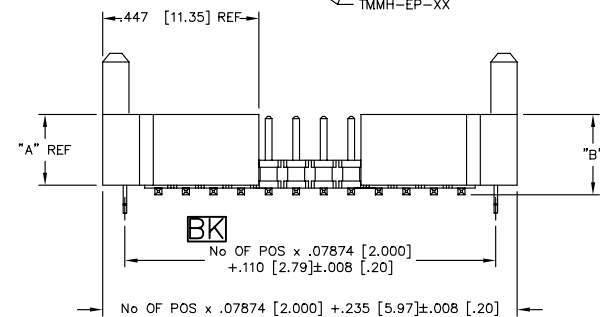
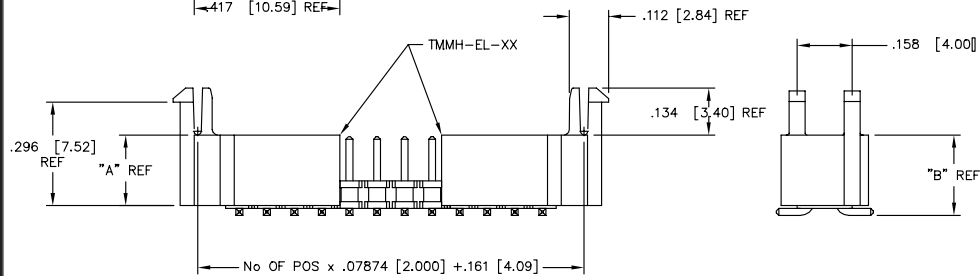


FIG. 5
-EL

STYLE	"A"	"B"	SHROUD
-01	.202 [5.13]	.230 [5.84]	TMMH-EL-01
-04	.149 [3.78]	.177 [4.50]	TMMH-EL-04
-05	.149 [3.78]	.177 [4.50]	TMMH-EL-04



PROPRIETARY NOTE
THIS DOCUMENT CONTAINS INFORMATION CONFIDENTIAL AND PROPRIETARY TO SAMTEC INC. AND SHALL NOT BE REPRODUCED OR TRANSMITTED IN ANY FORM OR BY ANY MEANS, ELECTRONIC OR MECHANICAL, INCLUDING PHOTOCOPYING, RECORDING, OR BY ANY INFORMATION STORAGE AND RETRIEVAL SYSTEM, WITHOUT THE EXPRESS WRITTEN CONSENT OF SAMTEC INC.

samtec

EXISPROD\ASSEMBLY\2MM
TMMH-AM2

520 PARK EAST BLVD. NEW ALBANY, INDIANA 47150
PHONE (812) 944-6733 P.O. BOX 1147
CODE 55322

MADE BY:
PURVIS 9-9-96

TMMH-1XX-XX-XX-DV-XXX-XXX
SHEET 2 OF 3

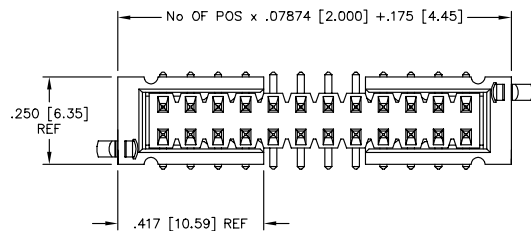
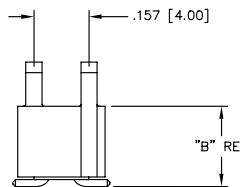
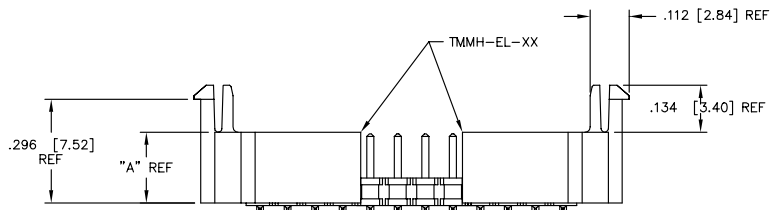
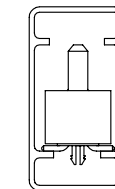


FIG. 8
-EBC

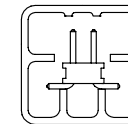
STYLE	"A"	"B"	SHROUD
-01	.202 [5.13]	.230 [5.84]	TMMH-EL-01
-04	.149 [3.78]	.177 [4.50]	TMMH-EL-04
-05	.149 [3.78]	.177 [4.50]	TMMH-EL-04



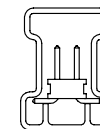
PACKAGING VIEW
(SCALE: .75X)



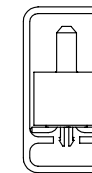
PT-1-24-15-29



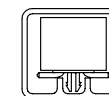
PT-1-24-05-63



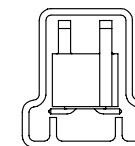
PT-1-24-02-17



PT-1-24-05-09



PT-1-24-04-38



PT-1-24-01-69

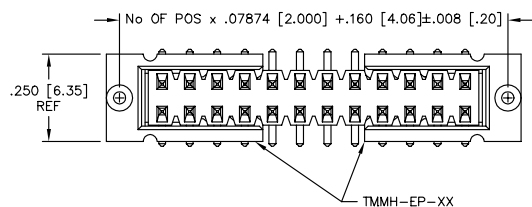
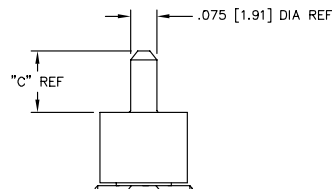
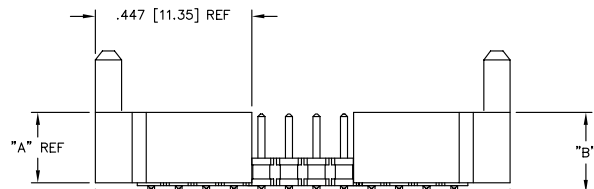


FIG. 9
-EP

STYLE	"A"	"B"	"C"	SHROUD
-01	.202 [5.13]	.230 [5.84]	.175 [4.45]	TMMH-EP-01
-04	.149 [3.78]	.177 [4.50]	.119 [3.02]	TMMH-EP-04
-05	.149 [3.78]	.177 [4.50]	.119 [3.02]	TMMH-EP-04



LEAD STYLE	OPTIONS	PACKAGING TUBE	PLUG
	-EPC-M	PT-1-24-15-29	TP-07
-01 ONLY	NONE, -A, -LC	PT-1-24-02-17	TP-09
	NONE, -A, -LC	PT-1-24-05-63	TP-24
	-ES, -EC, -ES-A, -ES-LC	PT-1-24-04-38	TP-24
	-EL, -EL-M, -EL-A	PT-1-24-01-69	TP-09
	-EP, -EPC, -EBC, -EP-M, -EBC-M, -EP-A-M, -EP-A, -EC-M	PT-1-24-05-09	TP-03
	-M, -A-M, -LC-M -ES-M, -ES-A-M -ES-LC-M	PT-1-24-01-103	TP-03

PROPRIETARY NOTE
 THIS DOCUMENT CONTAINS INFORMATION CONFIDENTIAL AND PROPRIETARY TO SAMTEC INC. AND SHALL NOT BE REPRODUCED OR TRANSMITTED IN ANY FORM OR BY ANY MEANS, ELECTRONIC OR MECHANICAL, INCLUDING PHOTOCOPYING, RECORDING, OR BY ANY INFORMATION STORAGE AND RETRIEVAL SYSTEM, WITHOUT THE EXPRESS WRITTEN CONSENT OF SAMTEC INC.



EXISPROD\ASSEMBLY\2MM
TMMH-AM3

520 PARK EAST BLVD. NEW ALBANY, INDIANA 47150
 PHONE (812) 944-6733 P.O. BOX 1147
 CODE 55322

MADE BY: PURVIS 9-9-96

TMMH-1XX-XX-XX-DV-XXX-XXX
 SHEET 3 OF 3

X-ON Electronics

Largest Supplier of Electrical and Electronic Components

Click to view similar products for [Headers & Wire Housings](#) category:

Click to view products by [Samtec](#) manufacturer:

Other Similar products are found below :

[95000-104TRLF](#) [10135584-644402LF](#) [DF62W-EP2022PCA](#) [95000-106TRLF](#) [DF62W-2022SCA](#) [DF62W-EP2022PC](#) [2203348](#) [DF62W-2022SC](#) [1084018](#) [1029039](#) [1084017](#) [802-10-012-10-002000](#) [1112640](#) [1112639](#) [891-007-9SS-BST1T](#) [000-34000](#) [0008550134](#) [0009482033](#) [0009507031](#) [57102-F02-18ULF](#) [57102-S06-03LF](#) [57202-S52-04LF](#) [PCN6-15S-2.5E](#) [0039019024](#) [58102-G61-06LF](#) [582553-1](#) [0009485154](#) [0009508121](#) [0022285053](#) [0050291907](#) [018731A](#) [LY20-4P-DT1-P1E-BR](#) [02.125.8002.8](#) [60101931](#) [60598-1 \(Cut Strip\)](#) [M1625-3R/100](#) [61062-3](#) [61082-181009](#) [CSU011177004](#) [636-1427](#) [638009-1](#) [641938-9](#) [641991-4](#) [644168-1](#) [644827-2](#) [647662-1](#) [65039-019ELF](#) [65692-001LF](#) [65781-018](#) [65781-047](#)