

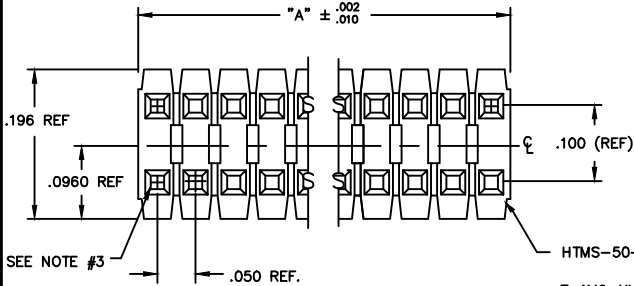
REVISIONS BO
DO NOT SCALE FROM THIS PRINT

- NOTES:
1. MAX ALLOWABLE BOW: .005 INCH/INCH.
2. MIN TERMINAL PUSHOUT FORCE: 2 lbs.
3. MAX PIN ROTATION IN BODY: 2'.
4. MAX CUT FLASH: .010
5. TUBE POSITIONS 8-50 ONLY. POSITIONS 1-7 TO BE BULK PACKAGED.
6. NOTE DELETED.

UNLESS OTHERWISE NOTED
DIMENSIONS ARE IN INCHES TOLERANCES ARE:
ONE PLACE DECIMALS ± .1 THREE PLACE DECIMALS ± .005 ANGLES ± 2°
TWO PLACE DECIMALS ± .01 FOUR PLACE DECIMALS ± .0020

TITLE: **TERMINAL MICRO STRIP**
DWG NO: **TMS-1XX-XX-XX-X-XX-XXX**
SHEET 1 OF 1

TMS-1XX-XX-XX-X-XX-XXX
OPTION
-POLARIZING SPECIFICATION
XXX INDICATES POS. TO BE OMITTED (SEE FIG. 1)
OPTION
-RA: RIGHT ANGLE (SEE TABLE 1)
(SINGLE & DOUBLE RA AVAILABLE IN STYLE -01, -02, & -03 ONLY)
BODY SPECIFICATION
-S: SINGLE (USE HTMS-50-S)
-D: DOUBLE (USE HTMS-50-D)



PLATING SPECIFICATION
-G: 10μ" GOLD IN CONTACT AREA, 10μ" GOLD ON TAIL
-T: MATTE TIN CONTACT AND TAIL
ONLY AVAILABLE ON LEAD STYLES -01, -02, -51 AND -52.
-S: 30μ" SELECTIVE GOLD IN CONTACT AREA, MATTE TIN ON TAIL
-F: 3μ" FLASH GOLD IN CONTACT AREA, MATTE TIN ON TAIL
-H: 30μ" HEAVY GOLD IN CONTACT AREA, 3μ" GOLD ON TAIL
-FM: 3μ" SELECTIVE FLASH GOLD IN CONTACT AREA, MATTE TIN ON TAIL
-SM: 30μ" SELECTIVE GOLD IN CONTACT AREA, MATTE TIN ON TAIL
-TM: MATTE TIN CONTACT AND TAIL
ONLY AVAILABLE ON LEAD STYLES -01, -02, -51 AND -52.
-L: 10μ" LIGHT SELECTIVE GOLD IN CONTACT AREA, MATTE TIN ON TAIL

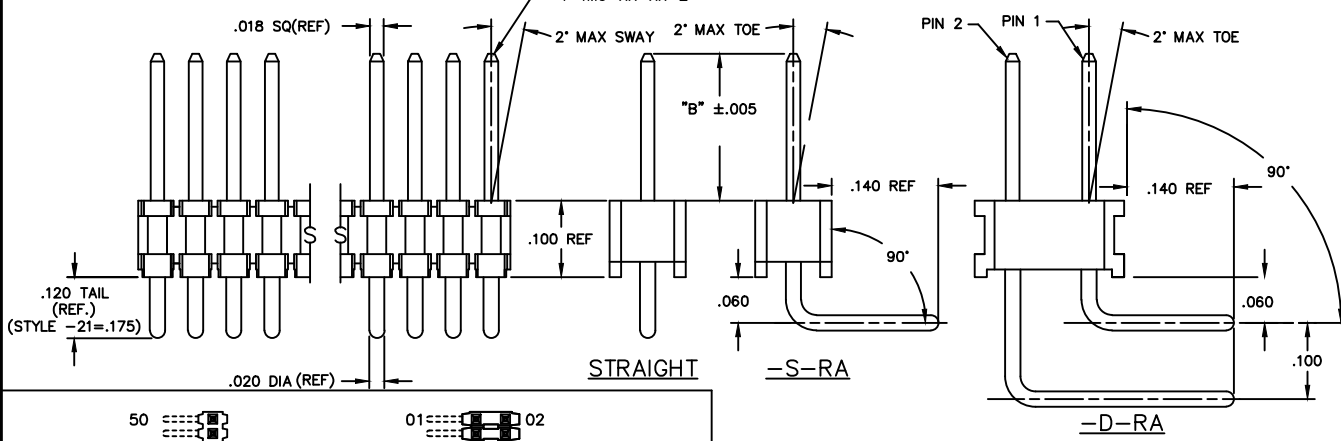
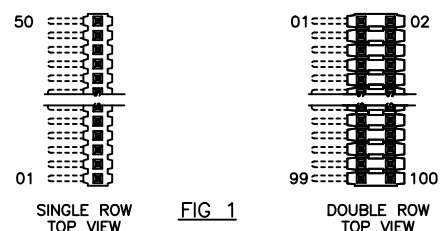


TABLE 2

LENGTH	"L"	CONTACT AREA
-01	.440	.140
-02	.410	.140
-03	.610	.190
-04	.505	.190
-05	.705	.190
-12	.425	.165
-13	.625	.190
-14	.555	.190
-15	.755	.190
-16	.825	.190
-17	.320	.060
-18	.450	.190
-19	.650	.190
-21	.505	.190
-25	.330	.060
-26	.373	.075
-27	.398	.100
-28	1.050	.190

* REF FOR PIN LENGTH

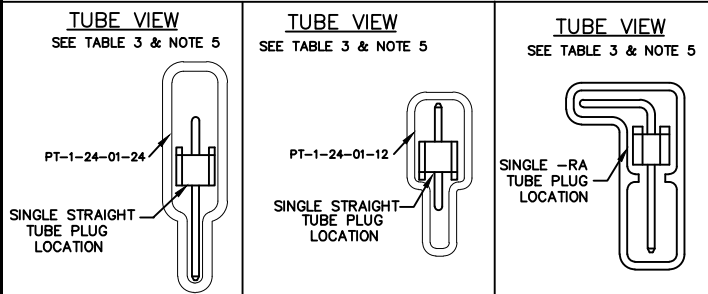


PACKAGING TUBE- TABLE 3

BODY STYLE	LEAD STYLE	TUBE	PLUG		
TMS-DOUBLE STRAIGHT STYLES	-01,-21, -51,-52	PT-1-24-01-22	TP-03		
	-02	PT-1-24-01-95	TP-03		
	-53	PT-1-24-02-66	TP-03		
	-55,-56	PT-1-24-01-29	TP-03		
	-54	PT-1-24-02-46	TP-03		
	-57	PT-1-24-02-25	TP-03		
	-58,-59	PT-1-24-16-29	TP-07		
	-60	PT-1-24-18-29	TP-07		
	TMS-SINGLE STRAIGHT STYLES	-01	PT-1-24-01-24	TP-24	
		-21	PT-1-24-02-29	TP-24	
-58,-59,-60		PT-1-24-10-03	TP-33		
-02		PT-1-24-01-12	TP-12		
-51,-52		PT-1-24-01-66	TP-24		
-53,-54, -55,-56		PT-1-24-02-03	TP-24		
-57		PT-1-24-01-46	TP-24		
TMS-DOUBLE RIGHT ANGLE		-01,-02,-03	PT-1-24-02-66	TP-03	
		TMS-SINGLE RIGHT ANGLE	-01,-02,-03	PT-1-24-01-66	TP-24

TABLE 1

STRAIGHT OPTION		RIGHT ANGLE OPTION			ALL
LEAD STYLE	TERMINAL SPEC.	LEAD STYLE	PIN #1	PIN #2	"B"
-01	T-1M6-18-XX-2	-01	T-1M6-14-XX-2	T-1M6-15-XX-2	.230
-02	T-1M6-17-XX-2	-02	T-1M6-12-XX-2	T-1M6-13-XX-2	.100
-03	N/A	-03	T-1M6-18-XX-2	T-1M6-19-XX-2	.125
-21	T-1M6-21-XX-2	-21	N/A	N/A	.250
-51	T-1M6-02-XX-2	-51	N/A	N/A	.190
-52	T-1M6-12-XX-2	-52	N/A	N/A	.205
-53	T-1M6-04-XX-2	-53	N/A	N/A	.285
-54	T-1M6-14-XX-2	-54	N/A	N/A	.335
-55	T-1M6-03-XX-2	-55	N/A	N/A	.390
-56	T-1M6-13-XX-2	-56	N/A	N/A	.405
-57	T-1M6-19-XX-2	-57	N/A	N/A	.430
-58	T-1M6-05-XX-2	-58	N/A	N/A	.485
-59	T-1M6-15-XX-2	-59	N/A	N/A	.535
-60	T-1M6-16-XX-2	-60	N/A	N/A	.605



MATERIAL:
INSULATOR:
LCP UL94 V-0
COLOR: BLACK
TERMINAL:
PHOSPHOR BRONZE

samtec EDSPROD/ASSEMBLY/050 TMS-ASM
520 PARK EAST BLVD. NEW ALBANY, INDIANA 47151-1147
PHONE (812) 944-6733 P.O. BOX 1147
CODE 55322
MADE BY: PURVIS 8-13-87
CHECKED BY: WILLIAMS 10-21-87
ENG. APPROVAL
TMS-1XX-XX-XX-X-XX-XXX
SHEET 1 OF 1

PROPRIETARY NOTE
THIS DOCUMENT CONTAINS CONFIDENTIAL AND UNCLASSIFIED INFORMATION. IT IS THE PROPERTY OF SAMTEC CORPORATION. IT IS TO BE USED ONLY FOR THE PURPOSES AND IN THE MANNER SPECIFICALLY AUTHORIZED BY SAMTEC CORPORATION. IT IS NOT TO BE REPRODUCED, COPIED, OR DISSEMINATED IN ANY MANNER WITHOUT THE WRITTEN PERMISSION OF SAMTEC CORPORATION. SAMTEC CORPORATION IS NOT RESPONSIBLE FOR ANY DAMAGE TO PROPERTY OR PERSONS ARISING FROM THE USE OF THIS DOCUMENT.

X-ON Electronics

Largest Supplier of Electrical and Electronic Components

Click to view similar products for [Headers & Wire Housings](#) category:

Click to view products by [Samtec](#) manufacturer:

Other Similar products are found below :

[95000-104TRLF](#) [10135584-644402LF](#) [DF62W-EP2022PCA](#) [95000-106TRLF](#) [DF62W-2022SCA](#) [DF62W-EP2022PC](#) [2203348](#) [DF62W-2022SC](#) [1084018](#) [1029039](#) [1084017](#) [802-10-012-10-002000](#) [1112640](#) [1112639](#) [891-007-9SS-BST1T](#) [000-34000](#) [0008550134](#) [0009482033](#) [0009507031](#) [57102-F02-18ULF](#) [57102-S06-03LF](#) [57202-S52-04LF](#) [PCN6-15S-2.5E](#) [0039019024](#) [58102-G61-06LF](#) [582553-1](#) [0009485154](#) [0009508121](#) [009176003701906](#) [0022285053](#) [0050291907](#) [018731A](#) [LY20-4P-DT1-P1E-BR](#) [02.125.8002.8](#) [60101931](#) [60598-1 \(Cut Strip\)](#) [M1625-3R/100](#) [61062-3](#) [61082-181009](#) [CSU011177004](#) [636-1427](#) [638009-1](#) [641938-9](#) [641991-4](#) [644168-1](#) [644827-2](#) [647662-1](#) [65039-019ELF](#) [65692-001LF](#) [65781-018](#)