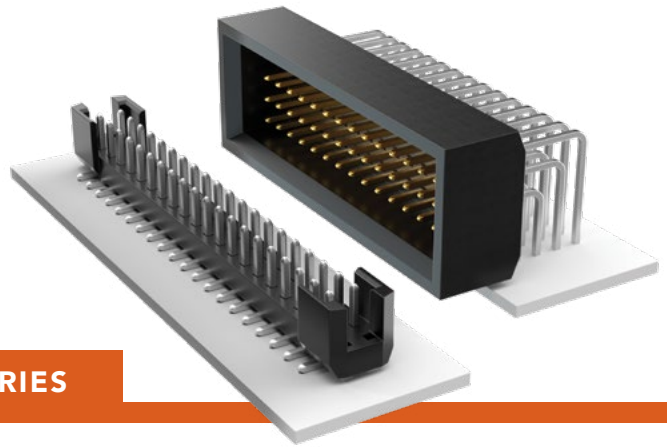


# SHROUDED HEADERS

(2.00 mm) .0787" PITCH • TSH/TMMS SERIES



## TSH

### Mates:

CLT, SQT, SQW, ESQT,  
TLE, SMM, MMS, PTF

## TMMS

### Mates:

SQT, SQW, ESQT

TSH	-	1	NO. PINS PER ROW	-	01	PLATING OPTION	-	ROW OPTION	-	OTHER OPTION
-----	---	---	------------------	---	----	----------------	---	------------	---	--------------

05, 10, 15, 20, 25,  
30, 35, 40, 45  
(40 & 45 = -D & -RA only)  
(Standard sizes)

**-F**  
= Gold flash on post, Matte Tin on tail

**-D**  
= Vertical Through-hole

**-LC**  
= Locking Clip (-DV only)  
(Not available with -A)  
(Manual placement required)

**-L**  
= 10 μ" (0.25 μm) Gold on post, Matte Tin on tail

**-DV**  
= Vertical Surface Mount

**-A**  
= Alignment Pin (-DV only)  
(Not available with -LC)

**-RA**  
= Right-angle Through-hole

**-SL**  
= Solder Locks (-DH only)

**-T**  
= Matte Tin

**-DH**  
= Horizontal Surface Mount

**-K**  
= (4.50 mm) .177" DIA Polyimide Film Pick & Place Pad (-DH only)  
(Not available with 15 - 30 positions)

**-TR**  
= Tape & Reel

**-FR**  
= Full Reel Tape & Reel (must order max. quantity per reel; contact Samtec for quantity breaks)

## SPECIFICATIONS

### Insulator Material:

Black Liquid Crystal Polymer

### Terminal Material:

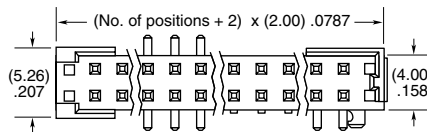
Phosphor Bronze

### Plating:

Sn or Au over 50 μ" (1.27 μm) Ni

### Operating Temp Range:

-55 °C to +105 °C with Tin;  
-55 °C to +125 °C with Gold



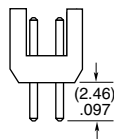
## PROCESSING

### Lead-Free Solderable:

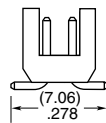
Yes

### SMT Lead Coplanarity (TSH):

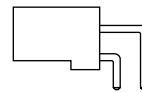
(0.15 mm) .006" max\*  
\*(.004" stencil solution may be available; contact IPG@samtec.com)



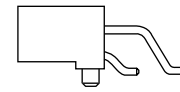
**-D**



**-DV**



**-RA**



**-DH**

TMMS	-	1	NO. PINS PER ROW	-	01	PLATING OPTION	-	Q	OPTION	-	FS
------	---	---	------------------	---	----	----------------	---	---	--------	---	----

05, 10, 15,  
20, 30, 40, 50

**-F**  
= Gold flash on post, Matte Tin on tail

**-RA**  
= Right-angle

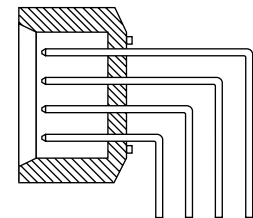
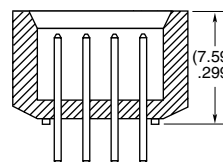
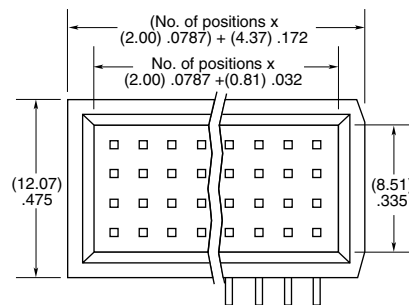
**-L**  
= 10 μ" (0.25 μm) Gold on post, Matte Tin on tail

## ALSO AVAILABLE

MOQ Required

Other sizes

Other plating



**-RA**

### Note:

Some lengths, styles and options are non-standard, non-returnable.

## X-ON Electronics

Largest Supplier of Electrical and Electronic Components

*Click to view similar products for [Headers & Wire Housings](#) category:*

*Click to view products by [Samtec](#) manufacturer:*

Other Similar products are found below :

[892-18-020-10-001101](#) [58102-G61-06LF](#) [582553-1](#) [0009485154](#) [009176003701906](#) [0050291907](#) [LY20-4P-DT1-P1E-BR](#) [02.125.8002.8](#)  
[609-3404](#) [61062-3](#) [61082-181009](#) [622-3653LF](#) [63453-116](#) [636-1030](#) [636-1427](#) [636-3427](#) [636-4007](#) [641938-9](#) [641991-4](#) [644827-2](#) [65817-](#)  
[010LF](#) [65817-015LF](#) [65863-015LF](#) [66207-023LF](#) [67095-007LF](#) [67601157](#) [68645-018](#) [68648-049](#) [70.362.1628.0](#) [70-4210](#) [70-4226B](#) [70-](#)  
[4853B](#) [707-5020](#) [707-5028](#) [71.350.2428.0](#) [71918-208LF](#) [71961-016LF](#) [733-134](#) [733-162](#) [754199-000](#) [760-3052](#) [79531-3000](#) [FCN-](#)  
[360C032-B](#) [FCN-367T-T012/H](#) [FCN-723D010/2](#) [80.063.4001.1](#) [800-90-001-10-001000](#) [800-90-010-10-002000](#) [801-43-002-10-013000](#)  
[801-43-006-10-002000](#)