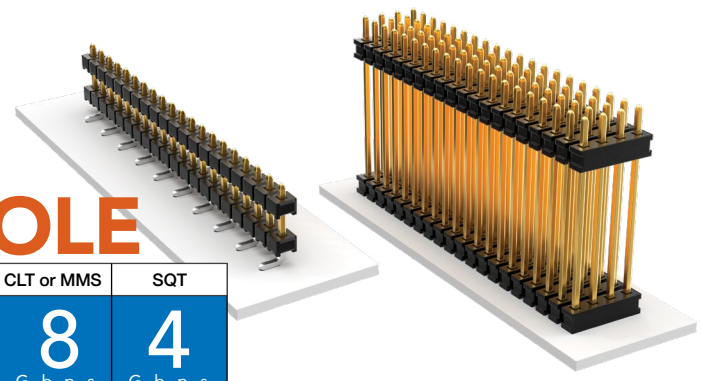


# SMT & THROUGH-HOLE BOARD STACKERS

(2.00 mm) .0787" PITCH • TW SERIES

CLT or MMS	SQT
8	4
G b p s	G b p s



## TW

### Board Mates:

CLT, SQT, SQW, ESQT, TLE, SMM, MMS

### Cable Mates:

TCSD

## SPECIFICATIONS

### Insulator Material:

Black Liquid Crystal Polymer

### Terminal Material:

Phosphor Bronze

### Plating:

Sn or Au over 50 μ" (1.27 μm) Ni

### Current Rating:

TW-SM = 4.9 A per pin (2 pins powered)

TW-TH = 5.2 A per pin (2 pins powered)

### Operating Temp Range:

-55 °C to +105 °C with Tin;

-55 °C to +125 °C with Gold

## PROCESSING

### Lead-Free Solderable:

Yes

### SMT Lead Coplanarity:

(0.15 mm) .006" max\*

\*(.004" stencil solution may be available; contact IPG@samtec.com)

TW	NO. PINS PER ROW	LEAD STYLE	PLATING OPTION	ROW OPTION	STACKER HEIGHT	SM	OTHER OPTION
----	------------------	------------	----------------	------------	----------------	----	--------------

02 thru 36

Specify LEAD STYLE from chart

-F = Gold flash on post, Matte Tin on tail

-S = Single Row

-"XXX"  
= Stacker Height in inches (0.13 mm) .005" increments

-"XXX"  
= Polarized Position

-A

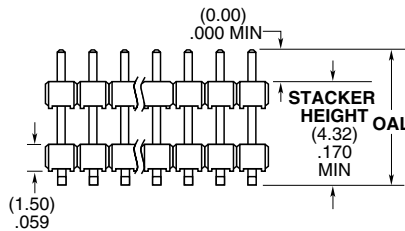
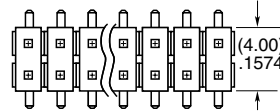
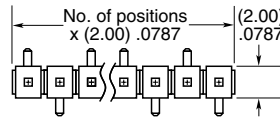
= Alignment Pin (Metal or plastic at Samtec discretion) (4.83 mm) .190" min. board space (-D only)

-P

= Pick & Place Pad (1.91 mm) .075" min. post height (04-36 only)

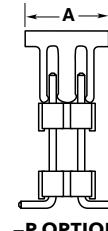
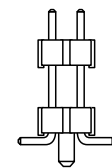
-"X"R

Specify "T" for Tape & Reel  
Specify "F" for Full Reel Tape & Reel (must order max. quantity per reel; contact Samtec for quantity breaks)  
(-07 lead style N/A)  
(-06 lead style with -P option N/A as standard)



LEAD STYLE	OAL
-02	(7.85) .309
-03	(11.86) .467
-04	(12.37) .487
-06	(15.37) .605
-07	(17.35) .683
-09	(9.86) .388

ROW OPTION	A
-S	(5.08) .200
-D	(6.35) .250



## ALSO AVAILABLE

MOQ Required

Other Platings

End shrouds with or without guide post

TW	NO. PINS PER ROW	LEAD STYLE	PLATING OPTION	ROW OPTION	STACKER HEIGHT	TAIL SPEC
----	------------------	------------	----------------	------------	----------------	-----------

02 thru 50

Specify LEAD STYLE from chart

-F = Gold flash on post, Matte Tin on tail

-S = Single Row

-"XXX"  
= Stacker Height in inches (0.13 mm) .005" increments

-"XXX"  
= Tail Length in inches (0.13 mm) .005" increments

-L = 10 μ" (0.25 μm) Gold on post, Matte Tin on tail

-D = Double Row

Example: -250 = (6.35 mm) .250"

Example: -150 = (3.81 mm) .150"

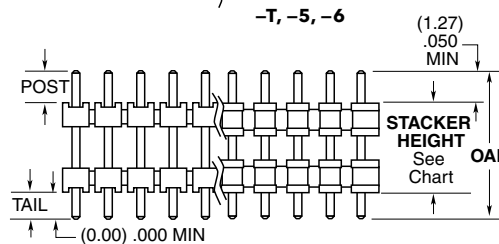
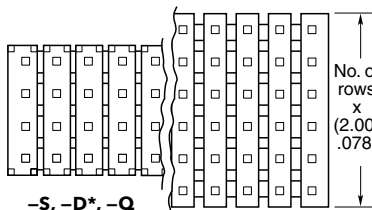
-T = Triple Row

-Q = Four Row

-5 = Five Row

-6 = Six Row

LEAD STYLE	OAL
-01	(8.20) .323
-02	(9.60) .377
-03	(13.60) .535
-04	(14.10) .555
-05	(15.10) .594
-06	(17.10) .673
-07	(19.10) .751
-08*	(21.10) .830
-09	(11.60) .456
-10	(15.60) .614
-11	(10.08) .397
-12*	(28.19) 1.110



ROW OPTION	STACKER HEIGHT
-S, -D*, -Q	(3.05) .120 MIN
-T, -5, -6	(4.06) .160 MIN

\*-D with stacker height greater than (4.06 mm) .160" will not have standoffs.

\*Style -08 & -12 = S & D only

## Notes:

For added mechanical stability, Samtec recommends mechanical board spacers be used in applications with gold or selective gold plated connectors. Contact ipg@samtec.com for more information.

This Series is non-standard, non-returnable.

samtec.com?TW-SM or samtec.com?TW-TH

F-221 (Rev 19MAR21)

## X-ON Electronics

Largest Supplier of Electrical and Electronic Components

*Click to view similar products for [Board to Board & Mezzanine Connectors](#) category:*

*Click to view products by [Samtec](#) manufacturer:*

Other Similar products are found below :

[589158040000018](#) [MDF7C-18P-2.54DSA\(55\)](#) [FCN-230C068-11](#) [FCN-268F012-G/BD](#) [FCN-268F036-G/BD](#) [FCN-268M012-G/0D](#) [FCN-268M024-G/1D](#) [FCN-723J004/1](#) [MIS-048-01-F-D-DP-K](#) [832-10-034-10-001000](#) [FX4C-80S-1.27DSA](#) [FCN-214Q030-G/0](#) [FCN-234P048-G/0](#) [FCN-235D050-G/C](#) [210-93-314-41-105000](#) [2-22603-0](#) [MDF7-40DP-2.54DSA\(55\)](#) [AXG720047](#) [5031084030](#) [MIT-114-03-F-D-K](#) [55323-1519](#) [DF33-2P-3.3DSA\(24\)](#) [YFT-20-05-H-03-SB-K](#) [503308-3040](#) [026-6203-PDB](#) [027-6203-PDB](#) [069159702701000](#) [10123981-102LF](#) [101A10019X](#) [55650-0588-C](#) [68682-310LF](#) [68684-306](#) [75140-7012](#) [87471-650](#) [YTW-30-07-H-Q-410-140](#) [194261-1](#) [FCN-268F024-G0D](#) [10124054-515LF](#) [68685-603](#) [8-1616154-3](#) [MIS-019-01-F-D](#) [FCN-268M024-G/3D](#) [20021832-06016C1LF](#) [KX15-20KLDL-E1000E](#) [MDF7-16DP-2.54DSA\(55\)](#) [AXE810124](#) [FCN-214J100-G/0](#) [FCN-230C068-E/S](#) [AXE812124](#) [AXE816124](#)