



HIGH-DENSITY COPPER FLYOVER® SYSTEM



FEATURES & BENEFITS

- Pin compatible with optical FireFly™ using the same connector system
- Data connection is taken "off board" for easier routing
- Low-cost solution for seamless integration of new and existing designs
- Low-profile housing for space savings
- x4 bidirectional or x12 unidirectional
- Variety of end 2 termination options

14 G b p s	x4 Bidirectional ECUE x12 Unidirectional ECUE
PAM 4	
56 G b p s	x4 Bidirectional ECUE-2



Standard Copper (ECUE)

- 14 Gbps
- 100 Ω, 34 AWG or 36 AWG Eye Speed® twinax cable



Optimized Copper (ECUE-2)

- 28 Gbps card design
- 100 Ω, 34 AWG Eye Speed® ultra low skew twinax cable
- Optimized for use with connector UEC5-2



PCI Express®-Over-FireFly™ Copper (PCUE)

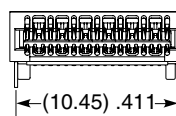
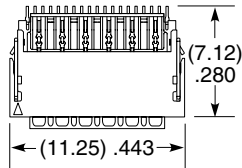
- PCIe® 4.0
- 100 Ω, 34 AWG Eye Speed® ultra low skew twinax cable
- Optimized for use with connector UEC5-2

RUGGED MICRO FLYOVER® SOCKET SYSTEM

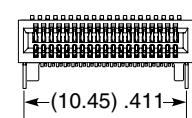
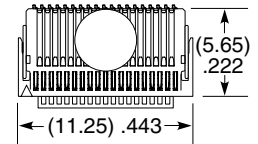
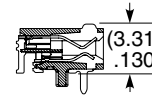
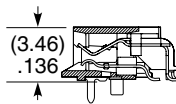
UEC5	NO. OF POSITIONS	DATA RATE	PLATING OPTION	D	RA	WELD TAB	OPTION	PACKAGING
	-019 (Per Row)	-1 = Up to 16 Gbps -2 = 28 Gbps+	-H = 30 μ" (0.76 μm) Gold on contact, Gold flash on tail (-1 Data Rate only) -H = 30 μ" (0.76 μm) Gold on contact, Matte Tin on tail (-2 Data Rate only)			-1 = Through-hole -2 = Surface Mount (Data Rate -1 only)	Leave blank for -2 Data Rate -A = Alignment Pin (Available with Data Rate -1 only)	Leave blank for Tape & Reel -FR = Full Reel Tape & Reel (must order max. quantity per reel; contact Samtec for quantity breaks)

UEC5

Board Mates:
ECUE, ECUO,
PCUO, PCUE,
ETUO



UEC5-019-2-X-D-RA-1



UEC5-019-1-X-D-RA-1-A

Note:
PCB footprints are not interchangeable for -1 and -2 data rate versions.

View complete specifications at: samtec.com?UEC5-1 & samtec.com?UEC5-2

UCC8	NO. OF POSITIONS	1	PLATING OPTION	S	WELD TAB	A	PACKAGING
------	------------------	---	----------------	---	----------	---	-----------

-010

-H
= 30 μ" (0.76 μm)
Gold on contact,
Gold flash on tail

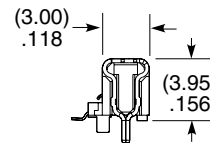
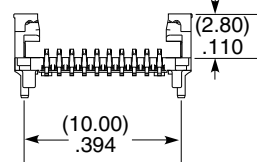
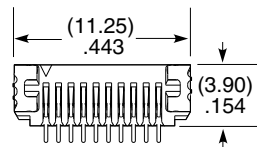
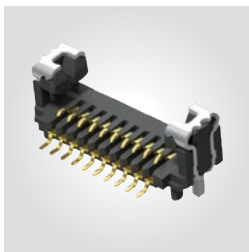
-1
= Through-hole

Leave blank for Tape & Reel

-FR
= Full Reel Tape & Reel
(must order max. quantity per reel; contact Samtec for quantity breaks)

UCC8

Board Mates:
ECUE, ECUO,
PCUO, PCUE,
ETUO



Note:
Some sizes, styles and options are non-standard, non-returnable.

View complete specifications at: samtec.com?UCC8

X-ON Electronics

Largest Supplier of Electrical and Electronic Components

Click to view similar products for [Micro TCA Connectors](#) category:

Click to view products by [Samtec](#) manufacturer:

Other Similar products are found below :

[MEB97318-219](#) [13-000151](#) [MDM-9PSM2-A174](#) [MEB2-64SL83-A159](#) [MDM-25SSK](#) [MDM-15SBSM7-A174](#) [MDM-21PCBRP-A174](#)
[MDM-21PCBRM7-A174](#) [MDM-25PH074M5](#) [MDM-9PL93M7-A174](#) [MEB1-128P](#) [13-000161](#) [13-000141](#) [16111705207000](#) [10058831-110LF](#) [10058831-111LF](#) [10058835-1000LF](#) [10058835-1001LF](#) [10070163-01LF](#) [10084423-103LF](#) [10084423-102LF](#) [10084423-101LF](#)
[MDM-25PSB-A174](#) [MDM-9PL1B](#) [MEB2-64SBR](#) [MDM-21PCBR-A174](#) [13-000201](#) [16041705104000](#) [16041705106000](#) [16310341201000](#)
[16320301101000](#) [16320341101000](#) [16330961201000](#) [16340961101000](#) [MDM-21PSB](#) [MDM-21SSB-A174](#) [75594-0000](#) [MTCA-085-02-S-DV-SMT-K-TR](#) [UCC8-010-1-H-S-1-A](#) [UEC5-019-1-H-D-RA-1-A](#) [UEC5-019-1-H-D-RA-2-A](#) [UEC5-019-2-H-D-RA-1](#) [1-1469820-1](#)
[1766501-2](#) [1888803-1](#) [4-1469372-2](#) [5-1469373-5](#) [6-1469372-8](#) [6-1469373-8](#)