



# HIGH-DENSITY COPPER FLYOVER<sup>®</sup> SYSTEM



## FEATURES & BENEFITS

- Pin compatible with optical FireFly™ using the same connector system
- Data connection is taken "off board" for easier routing
- Low-cost solution for seamless integration of new and existing designs
- Low-profile housing for space savings
- x4 bidirectional or x12 unidirectional
- Variety of end 2 termination options

<b>14</b> G b p s	x4 Bidirectional ECUE x12 Unidirectional ECUE
<b>PAM 4</b>	
<b>56</b> G b p s	x4 Bidirectional ECUE-2



### Standard Copper (ECUE)

- 14 Gbps
- 100 Ω, 34 AWG or 36 AWG Eye Speed<sup>®</sup> twinax cable



### Optimized Copper (ECUE-2)

- 28 Gbps card design
- 100 Ω, 34 AWG Eye Speed<sup>®</sup> ultra low skew twinax cable
- Optimized for use with connector UEC5-2



### PCI Express<sup>®</sup>-Over-FireFly<sup>™</sup> Copper (PCUE)

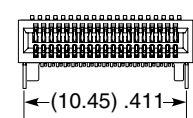
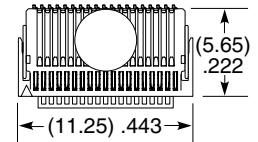
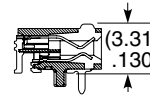
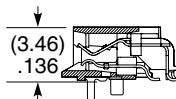
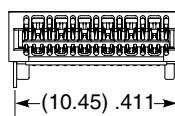
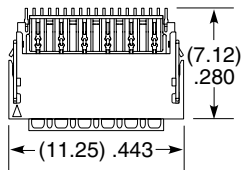
- PCIe<sup>®</sup> 4.0
- 100 Ω, 34 AWG Eye Speed<sup>®</sup> ultra low skew twinax cable
- Optimized for use with connector UEC5-2

# RUGGED MICRO FLYOVER® SOCKET SYSTEM

UEC5	NO. OF POSITIONS	DATA RATE	PLATING OPTION	D	RA	WELD TAB	OPTION	PACKAGING
	-019 (Per Row)	-1 = Up to 16 Gbps -2 = 28 Gbps+	-H = 30 μ" (0.76 μm) Gold on contact, Gold flash on tail (-1 Data Rate only)  -H = 30 μ" (0.76 μm) Gold on contact, Matte Tin on tail (-2 Data Rate only)			-1 = Through-hole  -2 = Surface Mount (Data Rate -1 only)	Leave blank for -2 Data Rate  -A = Alignment Pin (Available with Data Rate -1 only)	Leave blank for Tape & Reel  -FR = Full Reel Tape & Reel (must order max. quantity per reel; contact Samtec for quantity breaks)

## UEC5

**Board Mates:**  
ECUE, ECUO,  
PCUO, PCUE,  
ETUO



UEC5-019-2-X-D-RA-1

UEC5-019-1-X-D-RA-1-A

**Note:**  
PCB footprints are not interchangeable for -1 and -2 data rate versions.

View complete specifications at: [samtec.com?UEC5-1](http://samtec.com?UEC5-1) & [samtec.com?UEC5-2](http://samtec.com?UEC5-2)

UCC8	NO. OF POSITIONS	1	PLATING OPTION	S	WELD TAB	A	PACKAGING
------	------------------	---	----------------	---	----------	---	-----------

-010

-H  
= 30 μ" (0.76 μm)  
Gold on contact,  
Gold flash on tail

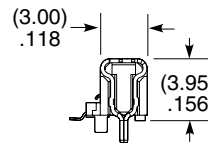
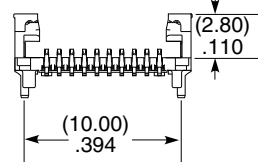
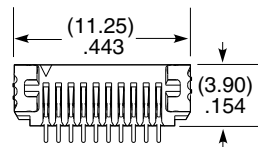
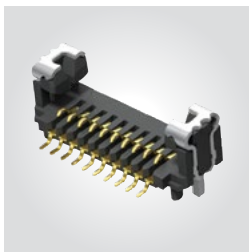
-1  
= Through-hole

Leave blank for Tape & Reel

-FR  
= Full Reel Tape & Reel  
(must order max. quantity per reel; contact Samtec for quantity breaks)

## UCC8

**Board Mates:**  
ECUE, ECUO,  
PCUO, PCUE,  
ETUO



**Note:**  
Some sizes, styles and options are non-standard, non-returnable.

View complete specifications at: [samtec.com?UCC8](http://samtec.com?UCC8)

## X-ON Electronics

Largest Supplier of Electrical and Electronic Components

*Click to view similar products for [Micro TCA Connectors](#) category:*

*Click to view products by [Samtec](#) manufacturer:*

Other Similar products are found below :

[MEB97318-219](#) [13-000151](#) [MDM-9PSM2-A174](#) [MEB2-64SL83-A159](#) [MDM-25SSK](#) [MDM-15SBSM7-A174](#) [MDM-21PCBRP-A174](#)  
[MDM-21PCBRM7-A174](#) [MDM-25PH074M5](#) [MDM-9PL93M7-A174](#) [MEB1-128P](#) [13-000161](#) [13-000141](#) [16111705207000](#) [10058831-110LF](#) [10058831-111LF](#) [10058835-1000LF](#) [10058835-1001LF](#) [10070163-01LF](#) [10084423-103LF](#) [10084423-102LF](#) [10084423-101LF](#)  
[MDM-25PSB-A174](#) [MDM-9PL1B](#) [MEB2-64SBR](#) [MDM-21PCBR-A174](#) [13-000201](#) [16041705104000](#) [16041705106000](#) [16310341201000](#)  
[16320301101000](#) [16320341101000](#) [16330961201000](#) [16340961101000](#) [MDM-21PSB](#) [MDM-21SSB-A174](#) [75594-0000](#) [MTCA-085-02-S-DV-SMT-K-TR](#) [UCC8-010-1-H-S-1-A](#) [UEC5-019-1-H-D-RA-1-A](#) [UEC5-019-1-H-D-RA-2-A](#) [UEC5-019-2-H-D-RA-1](#) [1-1469820-1](#)  
[1766501-2](#) [1888803-1](#) [4-1469372-2](#) [5-1469373-5](#) [6-1469372-8](#) [6-1469373-8](#)