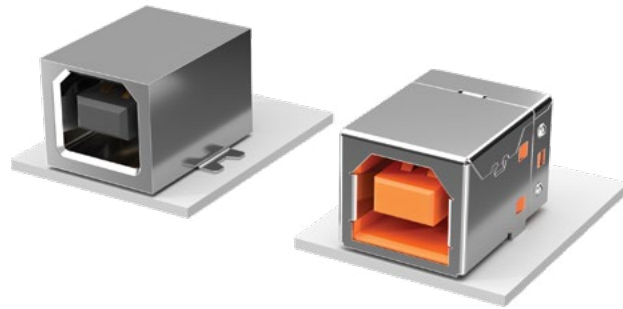


STANDARD & RUGGED USB 2.0

USB-B/USBR-B SERIES



SPECIFICATIONS

Insulator Material:

High Temperature Thermoplastic

Contact Material:

Phosphor Bronze

Plating:

Gold on Contacts, Nickel on Shell, Tin on Tails

Operating Temp Range:

-50 °C to +85 °C

Voltage Rating:

30 VAC

Cycles:

1500 (maximum number of cycles tested)

Packaging:

Packaged and shipped in Bulk Packaging Trays; Trays suitable for automation are available upon request.

Lead-Free Solderable:

USB-SM=Yes

USB-TH= Yes

(Wave Solder only)

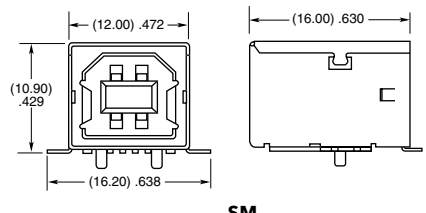
USBR=Yes (Wave Solder only)

TID Number:

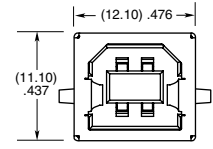
USB-B-S-X-TH (61001155)

| SERIES | B | S | PLATING | COLOR | TERMINATION | OTHER OPTION |
|--|---|---|--|-----------------------------------|--|---|
| USB = Standard Connector | | | | | | |
| USBR = Increased Retention Connector (Complies with Class 1, DIV II minimum withdrawal requirement of 15N) | | | | | | |
| | | | -F = Gold Flash on Mating Area, Tin on Tails | | | |
| | | | -S = 30 μ" (0.76 μm) Gold on Mating Area, Tin on Tails | | | |
| | | | | -B = Black (USB only) | | |
| | | | | -W = White (USB only) | | |
| | | | | -O = Orange (USBR only) | | |
| | | | | | -TH = Through-hole | |
| | | | | | -SM = Surface Mount (USB only) | |
| | | | | | -VT = Vertical Top Entry | |
| | | | | | | -TR = Tape and Reel (-SM only) |
| | | | | | | -FR = Full Reel Tape & Reel (must order maximum quantity per reel; contact Samtec for quantity breaks) (-SM only) |

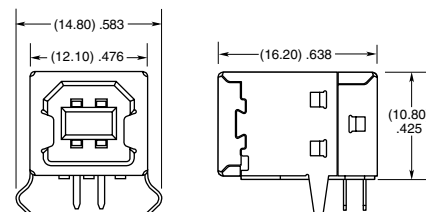
| MATING / UNMATING FORCE (100 CYCLES) | | |
|--------------------------------------|----------------|----------------|
| SERIES | MATING | UNMATING |
| USB | 5.3 (23.59 N) | 6.1 (27.15 N) |
| USBR | 11.8 (52.51 N) | 11.5 (51.18 N) |



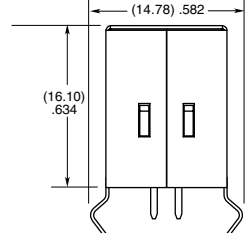
-SM



-VT



-TH



X-ON Electronics

Largest Supplier of Electrical and Electronic Components

Click to view similar products for [USB Connectors](#) category:

Click to view products by [Samtec](#) manufacturer:

Other Similar products are found below :

[65-647-8-BK-BU](#) [950](#) [952](#) [E8144-B01021-L](#) [A-USB B-TOP-C](#) [MUSBA511N5](#) [MUSBD11135](#) [217450-1](#) [KMBVX-TH-5S-B30](#) [896-30-004-00-000000](#) [KUSBVX-BS1N-W30](#) [KUSBX-AP-KIT-SCBLK](#) [KUSBX-AS2N-W](#) [KUSBX-SMT2AP1S-W](#) [KUSBX-SMT2AP1S-W30](#) [935](#) [957](#) [30-498-6](#) [SK-60A-2](#) [17-210051](#) [1734082-1](#) [30-1574](#) [30-470](#) [30-489](#) [30-541](#) [30-572-3](#) [A-USB A-2P-C](#) [MIKROE-1451](#) [USBFTV2PEM2G](#) [USBFTVC6ZN](#) [KUSBX-AS2N-W30](#) [KUSBX-SLAS1N-W](#) [KUSBX-SMT-AS1N-W30](#) [4689-1](#) [1-1734084-2](#) [E8110-001-01](#) [33UBARS1-04SW11](#) [33UBAR-04SW11](#) [USBF21ZNSCC](#) [USBBFTV6ZC](#) [10135326-001LF](#) [M9177/3-1](#) [USB-A-S-F-B-VT](#) [925](#) [4198](#) [690-024-633-031](#) [KUSBEX-BSFS1N-W](#) [USBFTVC6MRG](#) [UA-20BMFA-SL8001](#) [17-250101](#)