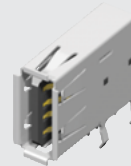


USB-A-D-S-B-TH

USB-A-S-F-O-TH



USB-AM-S-F-W-TH



USB-A-S-F-B-VU

**USB-A, USBR-A, USB-AM SERIES**

# STANDARD & RUGGED USB 2.0

## SPECIFICATIONS

For complete specifications and recommended PCB layouts see [www.samtec.com?USB-A](http://www.samtec.com?USB-A), [www.samtec.com?USBR-A](http://www.samtec.com?USBR-A) or [www.samtec.com?USB-AM](http://www.samtec.com?USB-AM)

**Insulator Material:**

High Temperature Thermoplastic

**Contact Material:**

Phosphor Bronze

**Plating:**

Gold on Contacts, Nickel on Shell, Tin on Tails

**Operating Temp Range:**

-50°C to +85°C

**Voltage Rating:**

30 VAC

**Contact Resistance:**

30 mΩ

**Cycles:**

1500 (max tested)

**Packaging:**

Packaged and shipped in Bulk Packaging Trays; Trays suitable for automation available

**RoHS Compliant:**

Yes

**Lead-Free Solderable**

-TH & -VU=Yes

(Wave Solder only)

**TID Numbers (USB-A):**

USB-A-D-X-X-TH (61001199)

USB-A-S-X-X-TH (61001180)

USB-A-S-X-X-SM2 (61001152)

**TID Number (USB-AM):**

USB-AM-S-X-X-SM (61001154)

## RECOGNITIONS

For complete scope of recognitions see [www.samtec.com/quality](http://www.samtec.com/quality)



FILE NO. E111594

TYPE	A	SHELL TYPE	PLATING	COLOR	TERMINATION
USB = Standard Connector		-S = Single -D = Double (-TH option only)	-F = Gold Flash on Mating Area, Tin on Tails -S = 30µ" (0.76 µm) Gold on Mating Area, Tin on Tails	-B = Black (USB only) -W = White (USB only) -O = Orange (USBR only)	-TH = Through-hole -SM2 = Surface Mount (USB only) -VU = Upright, Through-Hole

USB	TYPE	SHELL TYPE	PLATING	COLOR	TERMINATION
-AM = A Type (Plug)		-S = Single	-F = Gold Flash on Mating Area, Tin on Tails -S = 30µ" (0.76 µm) Gold on Mating Area, Tin on Tails	-B = Black -W = White	-TH = Through-hole -SM1 = Surface Mount

## X-ON Electronics

Largest Supplier of Electrical and Electronic Components

*Click to view similar products for [USB Connectors](#) category:*

*Click to view products by [Samtec](#) manufacturer:*

Other Similar products are found below :

[65-647-8-BK-BU](#) [950](#) [952](#) [E8144-B01021-L](#) [A-USB B-TOP-C](#) [MUSBA511N5](#) [MUSBD11135](#) [217450-1](#) [KMBVX-TH-5S-B30](#) [896-30-004-00-000000](#) [KUSBVX-BS1N-W30](#) [KUSBX-AP-KIT-SCBLK](#) [KUSBX-AS2N-W](#) [KUSBX-SMT2AP1S-W](#) [KUSBX-SMT2AP1S-W30](#) [935](#) [957](#) [30-498-6](#) [SK-60A-2](#) [17-210051](#) [1734082-1](#) [30-1574](#) [30-470](#) [30-489](#) [30-541](#) [30-572-3](#) [A-USB A-2P-C](#) [MIKROE-1451](#) [USBFTV2PEM2G](#) [USBFTVC6ZN](#) [KUSBX-AS2N-W30](#) [KUSBX-SLAS1N-W](#) [KUSBX-SMT-AS1N-W30](#) [4689-1](#) [1-1734084-2](#) [E8110-001-01](#) [33UBARS1-04SW11](#) [33UBAR-04SW11](#) [USBF21ZNSCC](#) [USBBFTV6ZC](#) [10135326-001LF](#) [M9177/3-1](#) [USB-A-S-F-B-VT](#) [925](#) [4198](#) [690-024-633-031](#) [KUSBEX-BSFS1N-W](#) [USBFTVC6MRG](#) [UA-20BMFA-SL8001](#) [17-250101](#)