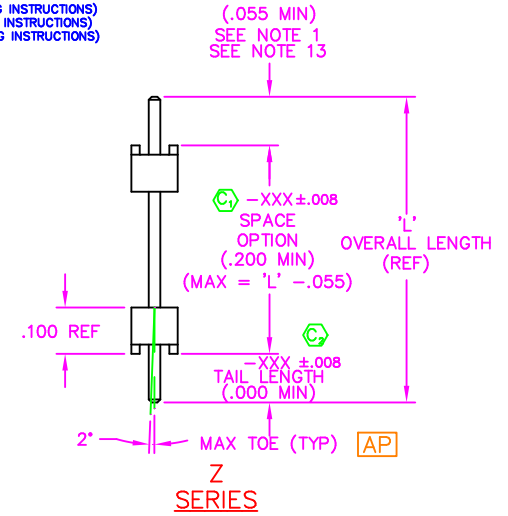
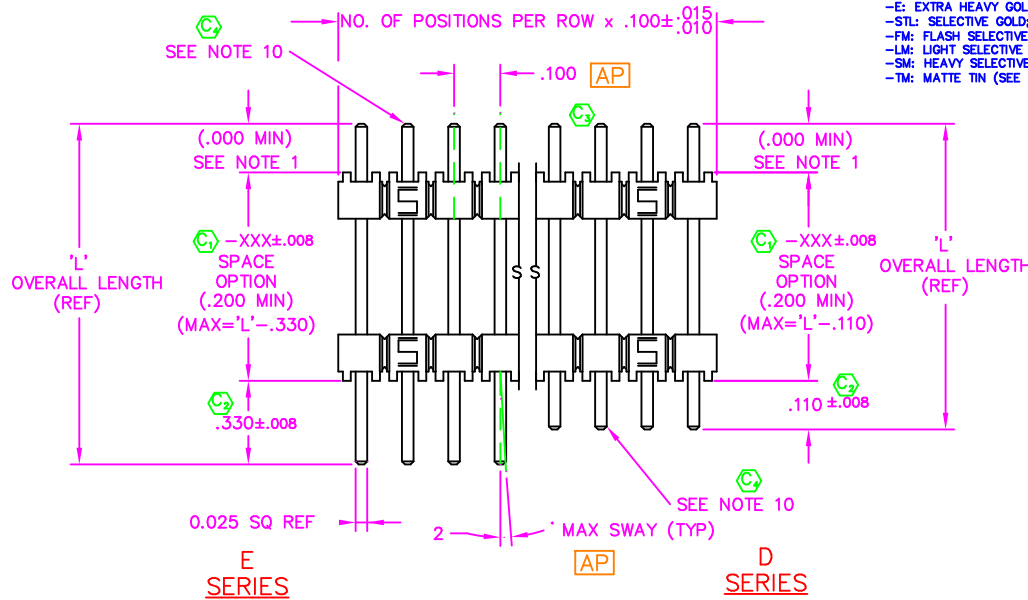
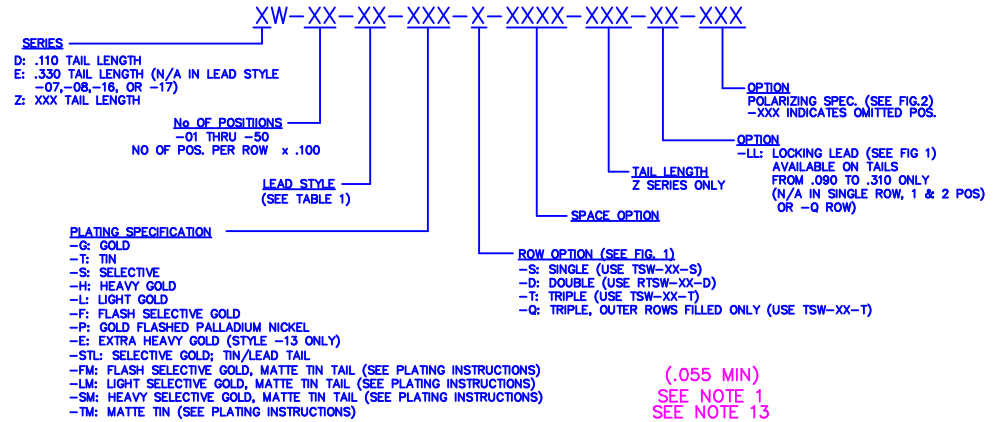


TABLE 1

LEAD STYLE		TERMINAL	'L' OVERALL LENGTH (REF)
SERIES D&Z	SERIES E		
07	N/A	T-1S6-07-XXX-2	.430
08	N/A	T-1S6-08-XXX-2	.530
09	09	T-1S6-09-XXX-2	.730
10	10	T-1S6-10-XXX-2	.830
11	11	T-1S6-11-XXX-2	.930
12	12	T-1S6-12-XXX-2	1.030
13	13	T-1S6-13-XXX-2	1.230
14	14	T-1S6-14-XXX-2	1.430
15	15	T-1S6-15-XXX-2	.630
16	N/A	T-1S6-16-XXX-2	.445
17	N/A	T-1S6-17-XXX-2	.480
19	19	T-1S6-19-XXX-2	1.330
20	20	T-1S6-20-XXX-2	1.130

DIMENSIONS ARE IN INCHES UNLESS OTHERWISE NOTED TOLERANCES ARE:

ONE PLACE DECIMALS ±.1	THREE PLACE DECIMALS ± .005	ANGLES ± 2°	TITLE: LOW COST BOARD SPACERS
TWO PLACE DECIMALS ±.01	FOUR PLACE DECIMALS ± .0020		DWG NO: XW-XX-XX-XXX-X-XXXX-XXX-XX-XXX SHEET 1 OF 2



- NOTES:**
- HEIGHT VARIATION BETWEEN ANY TWO PINS AND ROW SHALL BE .010 MAX.
 - S PLATING: PLATED AREA WILL BE ON THE LONGER TAIL.
 - G PLATING: HEAVY GOLD ON LONGER TAIL
 - L PLATING: GOLD ON LONGER TAIL
 - H PLATING: HEAVY GOLD ON LONGER TAIL
 - F PLATING: FLASH SELECTIVE GOLD ON LONGER TAIL
 - P PLATING: GOLD FLASHED PALLADIUM NICKEL ON LONGER TAIL
 - E PLATING: EXTRA HEAVY GOLD ON LONGER TAIL
 - (C) REPRESENTS A CRITICAL DIMENSION.
 - F, -S, -L, -P GOLD TO BE ON LONGER TAIL.
 - G, -H, -E, HEAVY GOLD TO BE ON LONGER TAIL.
 - CRIMPED TAILS OF .090 TO BE TOLERANCED +.008/-0.000.
 - TSW-50-D TO BE USED IF RTSW-50-D IS NOT AVAILABLE
 - .000 MIN IF TAIL LENGTH IS GREATER THAN OR EQUAL TO .055.
 - TERMINAL PUSHOUT FORCE: 3 LBS. MIN.
 - MAXIMUM CUT FLASH: .010[.25]

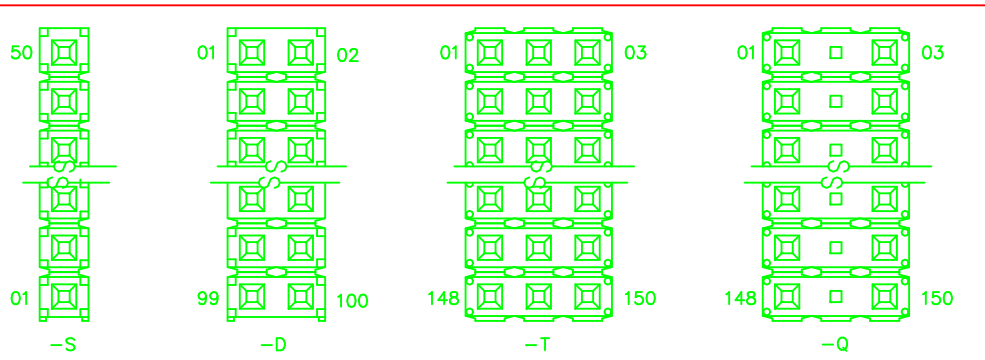


FIGURE 2
NUMBER POSITIONS WITH .330, .110, OR ZW TAIL DOWN

MATERIAL:
BODIES:
SINGLE & DOUBLE ROW STRAIGHT:
VALOX DR-48 or
DuPONT CRASTIN SK652FR
ALL OTHER BODY STYLES:
VALOX 420 SE0
GLASS FILLED POLYESTER
COLOR: BLACK
TERMINALS:
PHOSPHOR BRONZE, ALLOY
NO. 510, 3/4 HARD,
TENSILE RANGE 95-105 KSI

EXISPROD\ASSEMBLY\100
XW-ASM

samtec

520 PARK EAST BLVD. NEW ALBANY, INDIANA 47150
PHONE (812) 944-6733 P.O. BOX 1147
CODE 55322

MADE BY:
WILLIAMS 8-13-84

XW-XX-XX-XXX-X-XXXX-XXX-XX-XXX
SHEET 1 OF 2

DIMENSIONS ARE IN INCHES		UNLESS OTHERWISE NOTED	TOLERANCES ARE:
ONE PLACE DECIMALS ±.1	THREE PLACE DECIMALS ± .005	ANGLES ± 2°	
TWO PLACE DECIMALS ±.01	FOUR PLACE DECIMALS ± .0020		

TITLE: **LOW COST BOARD SPACERS**

DWG NO: XW-XX-XX-XXX-X-XXXX-XXX-XX-XXX
SHEET 2 OF 2

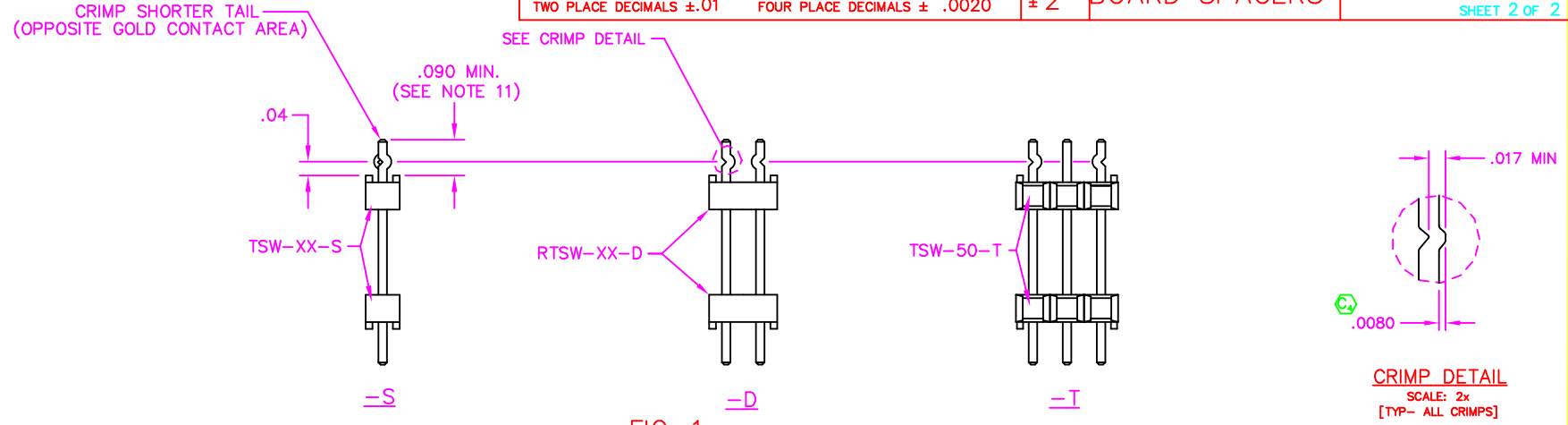
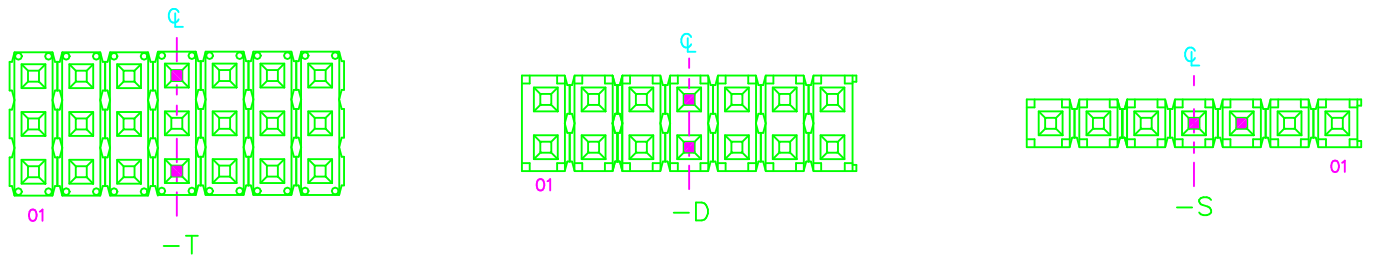
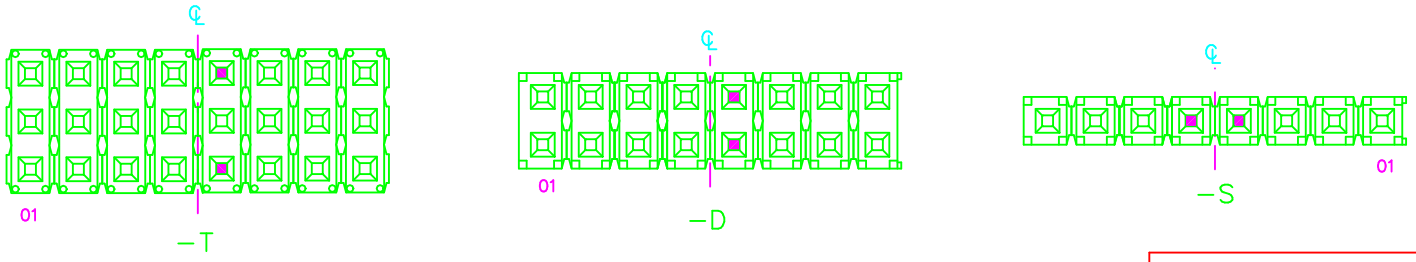


FIG. 1
LOCKING LEAD OPTION



■ = CRIMP LOCATION
CRIMP CENTER POSITION AND PIN CLOSEST TO PIN 1
ODD POSITIONS



■ = CRIMP LOCATION
TWO CENTER MOST PINS TO BE CRIMPED
EVEN POSITIONS

PROPRIETARY NOTE
THIS DOCUMENT CONTAINS INFORMATION CONFIDENTIAL AND PROPRIETARY TO SAMTEC INC. AND SHALL NOT BE REPRODUCED OR TRANSFERRED TO OTHER DOCUMENTS OR DISCLOSED TO OTHERS OR USED FOR ANY PURPOSE OTHER THAN THAT FOR WHICH IT WAS OBTAINED WITHOUT THE EXPRESSED WRITTEN CONSENT OF SAMTEC INC.

EXISPROD\ASSEMBLY\100 XW-ASM2

samtec

520 PARK EAST BLVD. NEW ALBANY, INDIANA 47150
PHONE (812) 944-6733 P.O. BOX 1147
CODE 55322

MADE BY: WILLIAMS 8-13-84

XW-XX-XX-XXX-X-XXXX-XXX-XX-XXX
SHEET 2 OF 2

X-ON Electronics

Largest Supplier of Electrical and Electronic Components

Click to view similar products for [Headers & Wire Housings](#) category:

Click to view products by [Samtec](#) manufacturer:

Other Similar products are found below :

[95000-104TRLF](#) [10135584-644402LF](#) [DF62W-EP2022PCA](#) [95000-106TRLF](#) [DF62W-2022SCA](#) [DF62W-EP2022PC](#) [2203348](#) [DF62W-2022SC](#) [1084018](#) [1029039](#) [1084017](#) [802-10-012-10-002000](#) [1112640](#) [1112639](#) [000-34000](#) [0009482033](#) [0009507031](#) [57102-S06-03LF](#) [57202-S52-04LF](#) [PCN6-15S-2.5E](#) [0039019024](#) [58102-G61-06LF](#) [582553-1](#) [0009485154](#) [0009508121](#) [0022285053](#) [0050291907](#) [018731A](#) [LY20-4P-DT1-P1E-BR](#) [02.125.8002.8](#) [60101931](#) [60598-1 \(Cut Strip\)](#) [M1625-3R/100](#) [61062-3](#) [61082-181009](#) [636-1427](#) [638009-1](#) [641938-9](#) [641991-4](#) [644168-1](#) [647662-1](#) [65039-019ELF](#) [65817-002LF](#) [65817-015LF](#) [65863-015LF](#) [66207-023LF](#) [67016-026LF](#) [67046-001LF](#) [67095-007LF](#) [67230-005LF](#)