

## DIODE(THREE PHASES BRIDGE TYPE)

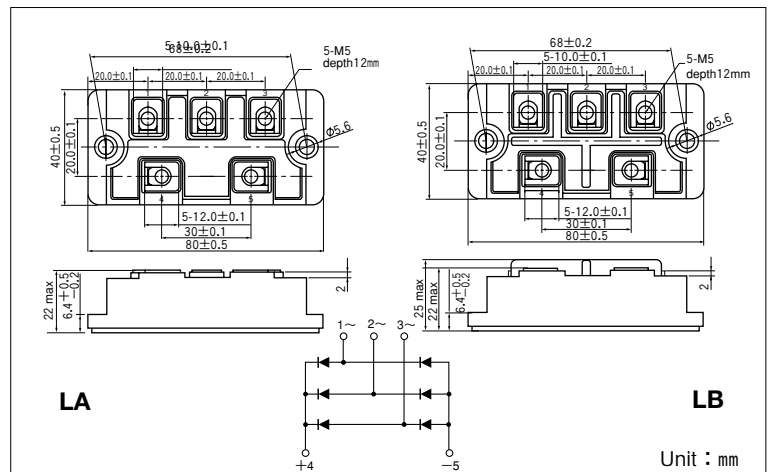
# DF100LA/LB80/160

Power Diode Module DF100LA/LB is designed for three phase full wave rectification, which has six diodes connected in a three phase bridge configuration. The mounting base of the module is electrically isolated from semiconductor elements for simple heatsink construction output DC current is 100Amp ( $T_c=90^\circ\text{C}$ ) Repetitive peak reverse voltage is up to 1600V.

- $T_{j\text{MAX}}=150^\circ\text{C}$
- Isolated Mounting Base

### (Applications)

AC. DC Motor Drive/AVR/Switching  
—for three phase rectification



### Maximum Ratings

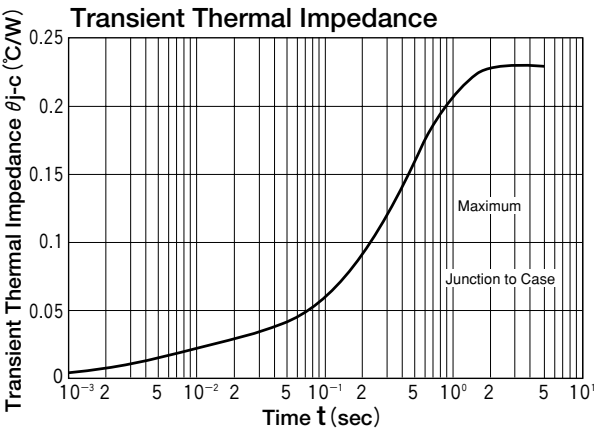
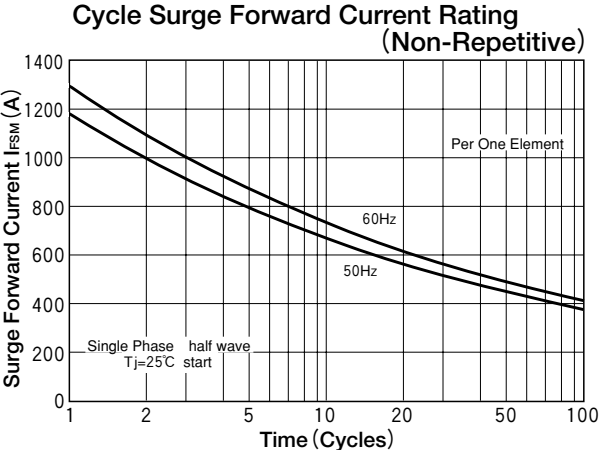
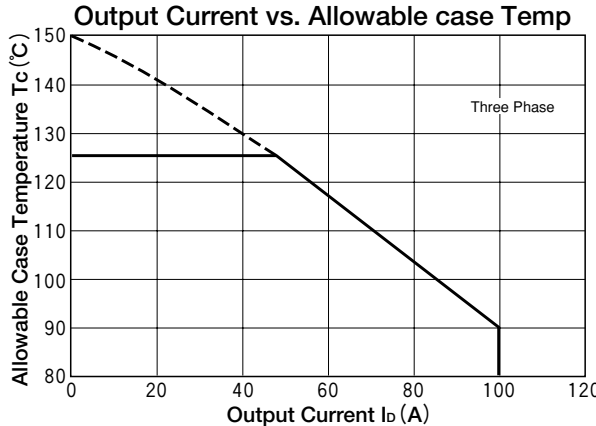
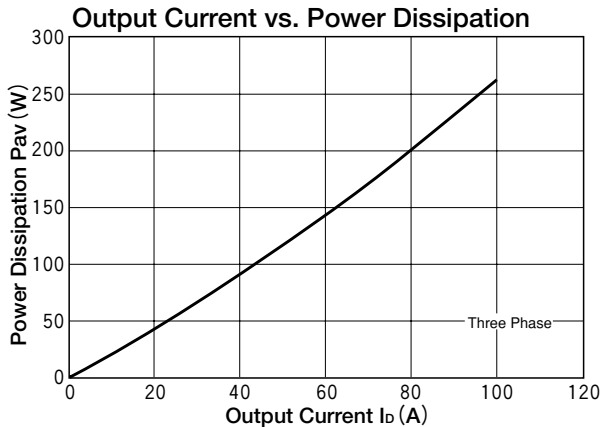
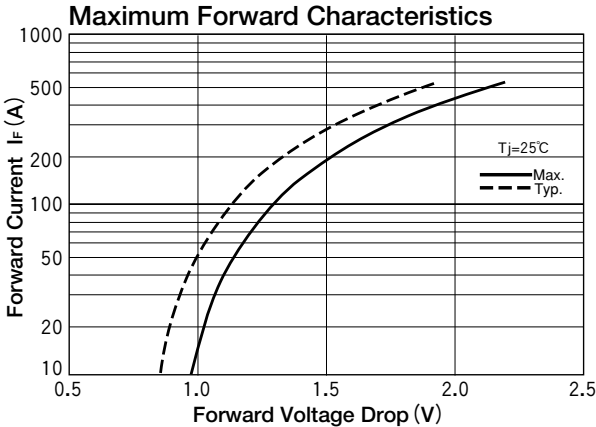
( $T_j=25^\circ\text{C}$  unless otherwise specified)

Symbol	Item	Ratings		unit
		DF100LA/LB80	DF100LA/LB160	
$V_{RRM}$	Repetitive Peak Reverse Voltage	800	1600	V
$V_{RSM}$	Non-Repetitive Peak Reverse Voltage	960	1700	V

Symbol	Item	Conditions	Ratings	unit	
$I_D$	Output Current (D.C.)	Three phase full wave, $T_c=90^\circ\text{C}$	100	A	
$I_{FSM}$	Surge Forward Current	$\frac{1}{2}$ cycle, 50/60Hz, Peak value, non-repetitive	1186/1300	A	
$T_j$	Operating Junction Temperature		-40 to +150	$^\circ\text{C}$	
$T_{stg}$	Storage Temperature		-40 to +125	$^\circ\text{C}$	
$V_{iso}$	Isolation Breakdown Voltage (R.M.S.)	A.C. 1minute	2500	V	
	Mounting torque	Mounting (M5)	Recommended Value 1.5-2.5 (15-25)	2.7 (28)	N·m (kgf·cm)
		Terminal (M5)	Recommended Value 1.5-2.5 (15-25)	2.7 (28)	
	Mass	Typical Value	100	g	

### Electrical Characteristics

Symbol	Item	Conditions	Ratings	unit
$I_{RRM}$	Repetitive Peak Reverse Current, max.	$T_j=150^\circ\text{C}$ , $V_R=V_{RRM}$	12	mA
$V_{FM}$	Forward Voltage Drop, max.	$I_F=100\text{A}$ , Inst. measurement	1.30	V
$R_{th(j-c)}$	Thermal Impedance, max.	Junction to case	0.23	$^\circ\text{C/W}$



## X-ON Electronics

Largest Supplier of Electrical and Electronic Components

*Click to view similar products for [Discrete Semiconductor Modules](#) category:*

*Click to view products by [Sanrex](#) manufacturer:*

Other Similar products are found below :

[M252511FV](#) [DD260N12K-A](#) [DD380N16A](#) [DD89N1600K-A](#) [APT2X21DC60J](#) [APT58M80J](#) [B522F-2-YEC](#) [MSTC90-16](#) [25.163.0653.1](#)  
[25.163.2453.0](#) [25.163.4253.0](#) [25.190.2053.0](#) [25.194.3453.0](#) [25.320.4853.1](#) [25.320.5253.1](#) [25.326.3253.1](#) [25.326.3553.1](#) [25.330.1653.1](#)  
[25.330.4753.1](#) [25.330.5253.1](#) [25.334.3253.1](#) [25.334.3353.1](#) [25.350.2053.0](#) [25.352.4753.1](#) [25.522.3253.0](#) [T483C](#) [T484C](#) [T485F](#) [T485H](#)  
[T512F-YEB](#) [T513F](#) [T514F](#) [T554](#) [T612FSE](#) [25.161.3453.0](#) [25.179.2253.0](#) [25.194.3253.0](#) [25.325.1253.1](#) [25.326.4253.1](#) [25.330.0953.1](#)  
[25.332.4353.1](#) [25.350.1653.0](#) [25.350.2453.0](#) [25.352.1453.0](#) [25.352.1653.0](#) [25.352.2453.0](#) [25.352.5453.1](#) [25.522.3353.0](#) [25.602.4053.0](#)  
[25.640.5053.0](#)