

### NO.STT-15A Series

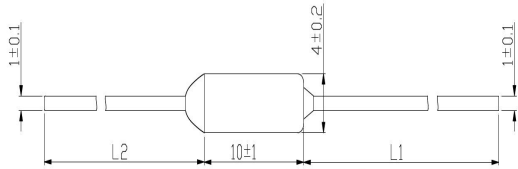
#### Features

With strong compact structures,high Insulation resistance and quickly heated advantages can be quickly action. When the products work under abnormal or can't be reset,can soon cut off the power.

#### Applications

Widely used in follow various field such as transformer, exhaust fan,fan and small power motor charger,adopter, secondary battery,household combined with gas water heater lightings and various heater equipment

#### Dimension (unit:mm)



L1=34mm±3mm, L2=20mm±3mm or 34mm±3mm. The length will be customized according to customer needs.

ST T 142C

Rated functioning temperature is 142°C

T:15A Thermal Fuse series

ST: Sante's Brand

#### Electrical characteristics at 25°C

| No. | Part number | Tf<br>(°C) | Operating temperature<br>(°C) | Th<br>(°C) | Tm<br>(°C) | I <sub>r</sub><br>(A) | I <sub>p</sub><br>(A) | Voltage<br>(V) | Approvals |     |     |     |     |    |
|-----|-------------|------------|-------------------------------|------------|------------|-----------------------|-----------------------|----------------|-----------|-----|-----|-----|-----|----|
|     |             |            |                               |            |            |                       |                       |                | UL        | CCC | TUV | PSE | VDE | CB |
| 1   | STT073C     | 73         | 71±2                          | 43         | 130        | 15A                   | 150                   | 250Vac         | ○         | ○   | ●   | ○   | ○   | ○  |
| 2   | STT077C     | 77         | 74±2                          | 47         | 130        | 15A                   | 150                   | 250Vac         | ○         | ○   | ●   | ○   |     | ○  |
| 3   | STT113C     | 113        | 108±3                         | 83         | 160        | 15A                   | 150                   | 250Vac         | ○         | ○   | ●   | ○   | ○   | ○  |
| 4   | STT121C     | 121        | 117±3                         | 91         | 160        | 15A                   | 150                   | 250Vac         | ○         | ○   | ●   | ○   | ○   | ○  |
| 5   | STT133C     | 133        | 129±3                         | 103        | 160        | 15A                   | 150                   | 250Vac         | ○         | ○   | ●   | ○   | ○   | ○  |
| 6   | STT142C     | 142        | 138±3                         | 112        | 170        | 15A                   | 150                   | 250Vac         | ○         | ○   | ●   | ○   | ○   | ○  |
| 7   | STT157C     | 157        | 152±3                         | 127        | 170        | 15A                   | 150                   | 250Vac         | ○         | ○   | ●   | ○   | ○   | ○  |
| 8   | STT167CC    | 167        | 164±3                         | 137        | 190        | 15A                   | 150                   | 250Vac         | ○         | ○   | ●   | ○   | ○   | ○  |
| 9   | STT172C     | 172        | 169±3                         | 142        | 190        | 15A                   | 150                   | 250Vac         | ○         | ○   | ●   | ○   | ○   | ○  |
| 10  | STT184C     | 184        | 180±3                         | 154        | 210        | 15A                   | 150                   | 250Vac         | ○         | ○   | ●   | ○   | ○   | ○  |
| 11  | STT216C     | 216        | 213±3                         | 186        | 260        | 15A                   | 150                   | 250Vac         | ○         | ○   | ●   | ○   | ○   | ○  |

●= Approved ○=Going on

Tf Functioning temperature,the standard tolerance:+0,-5°C

Th holding temperature:Maximum durative exposed exposed temperature.

Tm maximum temperature:The highest temperature at which the thermal link wont change the condition

| Qty | Order-number | Series | Amp code | Voltage | Packaging |
|-----|--------------|--------|----------|---------|-----------|
|     | STT-15A      |        |          |         |           |

### NO.STS-10A Series



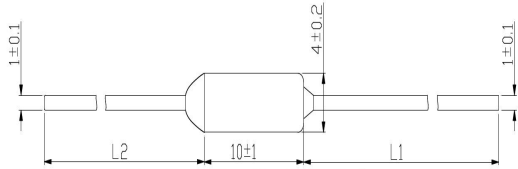
### Features

With strong compact structures,high Insulation resistance and quickly heated advantages can be quickly action. When the products work under abnormal or can't be reset,can soon cut off the power.

### Applications

Widely used in follow various field such as transformer, exhaust fan,fan and small power motor charger,adopter, secondary battery,household combined with gas water heater lightings and various heater equipment

### Dimension (unit:mm)



L1=34mm±3mm, L2=20mm±3mm or 34mm±3mm. The length will be customized according to customer needs.

ST S 142C

Rated functioning temperature is 142°C

S:10A Thermal Fuse series

ST: Sante's Brand

### Electrical characteristics at 25°C

| No. | Part number | Tf   | Operating temperature | Th   | Tm   | Ir  | Ip  | Voltage | Approvals |     |     |     |     |    |
|-----|-------------|------|-----------------------|------|------|-----|-----|---------|-----------|-----|-----|-----|-----|----|
|     |             | (°C) | (°C)                  | (°C) | (°C) | (A) | (A) | (V)     | UL        | CCC | TUV | PSE | VDE | CB |
| 1   | STS073C     | 73   | 71±2                  | 43   | 130  | 10A | 150 | 250Vac  | ○         | ○   | ●   | ○   | ○   | ○  |
| 2   | STS077C     | 77   | 74±2                  | 47   | 130  | 10A | 150 | 250Vac  | ○         | ○   | ●   | ○   | ○   | ○  |
| 3   | STS113C     | 113  | 108±3                 | 83   | 160  | 10A | 150 | 250Vac  | ○         | ○   | ●   | ○   | ○   | ○  |
| 4   | STS121C     | 121  | 117±3                 | 91   | 160  | 10A | 150 | 250Vac  | ○         | ○   | ●   | ○   | ○   | ○  |
| 5   | STS133C     | 133  | 129±3                 | 103  | 160  | 10A | 150 | 250Vac  | ○         | ○   | ●   | ○   | ○   | ○  |
| 6   | STS142C     | 142  | 138±3                 | 112  | 170  | 10A | 150 | 250Vac  | ○         | ○   | ●   | ○   | ○   | ○  |
| 7   | STS157C     | 157  | 152±3                 | 127  | 170  | 10A | 150 | 250Vac  | ○         | ○   | ●   | ○   | ○   | ○  |
| 8   | STS167C     | 167  | 164±3                 | 137  | 190  | 10A | 150 | 250Vac  | ○         | ○   | ●   | ○   | ○   | ○  |
| 9   | STS172C     | 172  | 169±3                 | 142  | 190  | 10A | 150 | 250Vac  | ○         | ○   | ●   | ○   | ○   | ○  |
| 10  | STS184C     | 184  | 180±3                 | 154  | 210  | 10A | 150 | 250Vac  | ○         | ○   | ●   | ○   | ○   | ○  |
| 11  | STS216C     | 216  | 213±3                 | 186  | 260  | 10A | 150 | 250Vac  | ○         | ○   | ●   | ○   | ○   | ○  |

●= Approved ○=Going on

Tf Functioning temperature,the standard tolerance:+0,-5°C

Th holding temperature:Maximum durative exposed exposed temperature.

Tm maximum temperature:The highest temperature at which the thermal link wont change the condition

| Qty | Order-number | Series | Amp code | Voltage | Packaging |
|-----|--------------|--------|----------|---------|-----------|
|     | STS-10A      |        |          |         |           |

## Contents

|                                   |   |
|-----------------------------------|---|
| 1. SCOPE.....                     | 2 |
| 2. AGENCY APPROVALS.....          | 2 |
| 3. PART NUMBERING SYSTEM.....     | 2 |
| 4. MECHANICAL SPECIFICATIONS..... | 3 |
| 5. OPERATING PRINCIPLE.....       | 3 |
| 6. ELECTRICAL SPECIFICATIONS..... | 4 |
| 7. END.....                       | 5 |



## 1. SCOPE

This Specification applies to STX series Thermal Fuses.

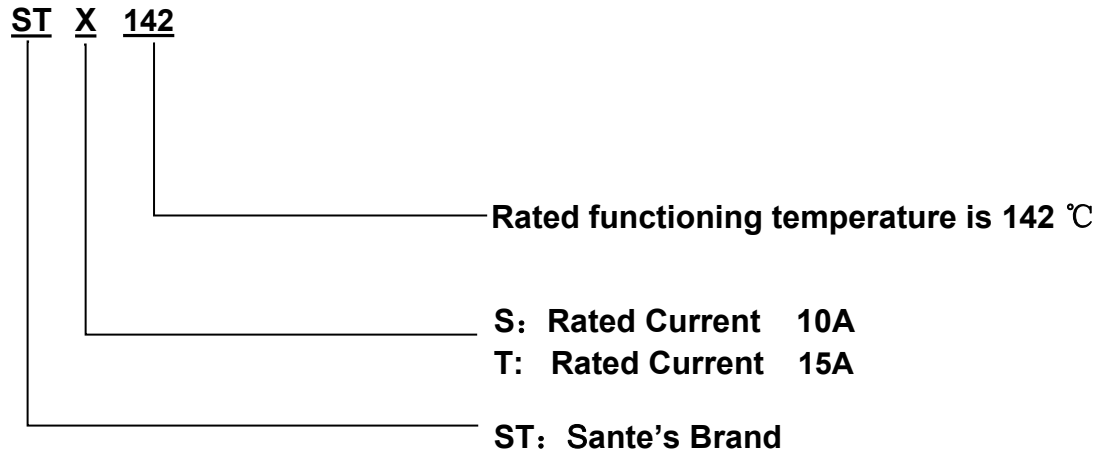
### 1.1 General Information

- Designed to EN 60691 (73°C – 216°C)
- RoHS compliant and HF

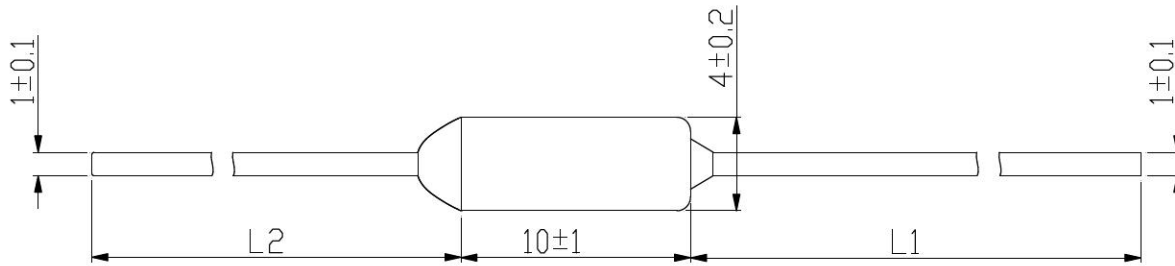
## 2. Agency Approvals

| Agency | Agency File Number |
|--------|--------------------|
| TUV    | R 50458082         |

## 3. Part Numbering System



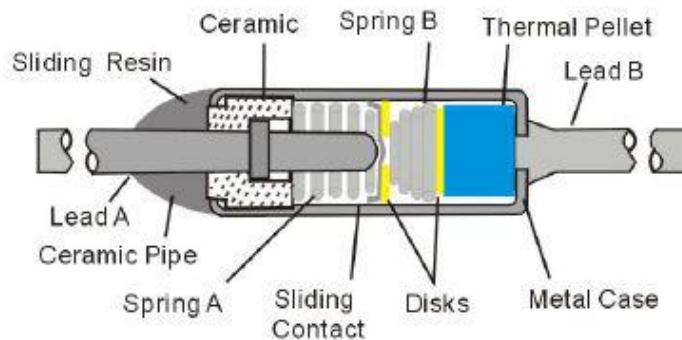
#### 4. MECHANICAL SPECIFICATIONS



$L_1=34\text{mm} \pm 3\text{mm}$ ,  $L_2=20\text{mm} \pm 3\text{mm}$  or  $34\text{mm} \pm 3\text{mm}$ . The length will be customized according to customer needs.

#### 5. Operating Principle

##### Before Operation



Loaded the metal shell with movable electrode ,spring and heat-variable fusion cake for RY series thermal fuse. Spring B is encased into it on the state of compression, that's can make spring B use copper backing to stand up to movable electrode in order to contact with lead A. In the state of normal times, current will be connect with lead B through lead A, movable electrode and metal shell

## X-ON Electronics

Largest Supplier of Electrical and Electronic Components

*Click to view similar products for [Thermal Cut-offs](#) category:*

*Click to view products by [SANTE](#) manufacturer:*

Other Similar products are found below :

[10A121250V](#) [10A133250V](#) [10A172250V](#) [10A184250V](#) [TB-1022A250T001BG](#) [TE-09410A250T001BG](#) [TE-09910A250T001BG](#) [TE-10310A250T001BG](#) [TE-12110A250T001BG](#) [TE-15210A250T001BG](#) [TG-11315A250T001BG](#) [TG-14215A250T002BG](#) [TG-14715A250T001BG](#) [TG-15215A250T002BG](#) [TG-16915A250T001BG](#) [TG-16915A250T002BG](#) [TG-18415A250T002BG](#) [TG-24015A250T002BG](#) [B1002B/60C/NO](#) [TB-1152A250T001BG](#) [TB-1252A250T001BG](#) [TB-1302A250T001BG](#) [TE-11310A250T001BG](#) [TE-11310A250T002BG](#) [TE-12810A250T001BG](#) [TE-14710A250T001BG](#) [TE-18710A250T001BG](#) [TE-21610A250T001BG](#) [TG-09415A250T001BG](#) [TG-10315A250T001BG](#) [TG-10315A250T002BG](#) [TG-11315A250T002BG](#) [TG-12815A250T002BG](#) [TG-15215A250T001BG](#) [TG-15215A250T003BG](#) [TU-1153A250T001BG](#)