

### NO.STT-15A Series

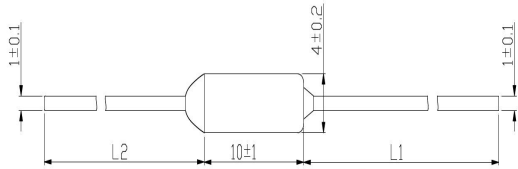
#### Features

With strong compact structures,high Insulation resistance and quickly heated advantages can be quickly action. When the products work under abnormal or can't be reset,can soon cut off the power.

#### Applications

Widely used in follow various field such as transformer, exhaust fan,fan and small power motor charger,adopter, secondary battery,household combined with gas water heater lightings and various heater equipment

#### Dimension (unit:mm)



L1=34mm±3mm, L2=20mm±3mm or 34mm±3mm. The length will be customized according to customer needs.

ST T 142C

Rated functioning temperature is 142°C  
T:15A Thermal Fuse series  
ST: Sante's Brand

#### Electrical characteristics at 25°C

No.	Part number	Tf (°C)	Operating temperature (°C)	Th (°C)	Tm (°C)	I <sub>r</sub> (A)	I <sub>p</sub> (A)	Voltage (V)	Approvals					
									UL	CCC	TUV	PSE	VDE	CB
1	STT073C	73	71±2	43	130	15A	150	250Vac	○	○	●	○	○	○
2	STT077C	77	74±2	47	130	15A	150	250Vac	○	○	●	○	○	○
3	STT113C	113	108±3	83	160	15A	150	250Vac	○	○	●	○	○	○
4	STT121C	121	117±3	91	160	15A	150	250Vac	○	○	●	○	○	○
5	STT133C	133	129±3	103	160	15A	150	250Vac	○	○	●	○	○	○
6	STT142C	142	138±3	112	170	15A	150	250Vac	○	○	●	○	○	○
7	STT157C	157	152±3	127	170	15A	150	250Vac	○	○	●	○	○	○
8	STT167CC	167	164±3	137	190	15A	150	250Vac	○	○	●	○	○	○
9	STT172C	172	169±3	142	190	15A	150	250Vac	○	○	●	○	○	○
10	STT184C	184	180±3	154	210	15A	150	250Vac	○	○	●	○	○	○
11	STT216C	216	213±3	186	260	15A	150	250Vac	○	○	●	○	○	○

●= Approved ○=Going on

Tf Functioning temperature,the standard tolerance:+0,-5°C

Th holding temperature:Maximum durative exposed exposed temperature.

Tm maximum temperature:The highest temperature at which the thermal link wont change the condition

Qty	Order-number	Series	Amp code	Voltage	Packaging
	STT-15A				

**NO.STS-10A Series**



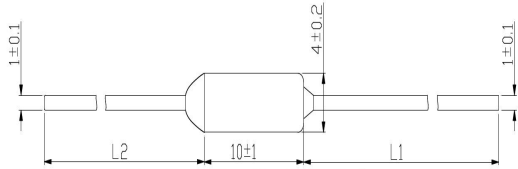
**Features**

With strong compact structures,high insulation resistance and quickly heated advantages can be quickly action. When the products work under abnormal or can't be reset,can soon cut off the power.

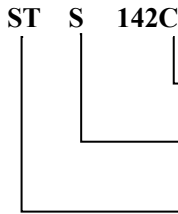
**Applications**

Widely used in follow various field such as transformer, exhaust fan,fan and small power motor charger,adopter, secondary battery,household combined with gas water heater lightings and various heater equipment

**Dimension (unit:mm)**



L1=34mm±3mm, L2=20mm±3mm or 34mm±3mm. The length will be customized according to customer needs.



Rated functioning temperature is 142°C

S:10A Thermal Fuse series

ST: Sante's Brand

**Electrical characteristics at 25°C**

No.	Part number	Tf	Operating temperature	Th	Tm	Ir	Ip	Voltage	Approvals					
		(°C)	(°C)	(°C)	(°C)	(A)	(A)	(V)	UL	CCC	TUV	PSE	VDE	CB
1	STS073C	73	71±2	43	130	10A	150	250Vac	○	○	●	○	○	○
2	STS077C	77	74±2	47	130	10A	150	250Vac	○	○	●	○	○	○
3	STS113C	113	108±3	83	160	10A	150	250Vac	○	○	●	○	○	○
4	STS121C	121	117±3	91	160	10A	150	250Vac	○	○	●	○	○	○
5	STS133C	133	129±3	103	160	10A	150	250Vac	○	○	●	○	○	○
6	STS142C	142	138±3	112	170	10A	150	250Vac	○	○	●	○	○	○
7	STS157C	157	152±3	127	170	10A	150	250Vac	○	○	●	○	○	○
8	STS167C	167	164±3	137	190	10A	150	250Vac	○	○	●	○	○	○
9	STS172C	172	169±3	142	190	10A	150	250Vac	○	○	●	○	○	○
10	STS184C	184	180±3	154	210	10A	150	250Vac	○	○	●	○	○	○
11	STS216C	216	213±3	186	260	10A	150	250Vac	○	○	●	○	○	○

●= Approved ○=Going on

Tf Functioning temperature,the standard tolerance:+0,-5°C

Th holding temperature:Maximum durative exposed exposed temperature.

Tm maximum temperature:The highest temperature at which the thermal link wont change the condition

Qty	Order-number	Series	Amp code	Voltage	Packaging
	STS-10A				

## Contents

1. SCOPE.....	2
2. AGENCY APPROVALS.....	2
3. PART NUMBERING SYSTEM.....	2
4. MECHANICAL SPECIFICATIONS.....	3
5. OPERATING PRINCIPLE.....	3
6. ELECTRICAL SPECIFICATIONS.....	4
7. END.....	5



## 1. SCOPE

This Specification applies to STX series Thermal Fuses.

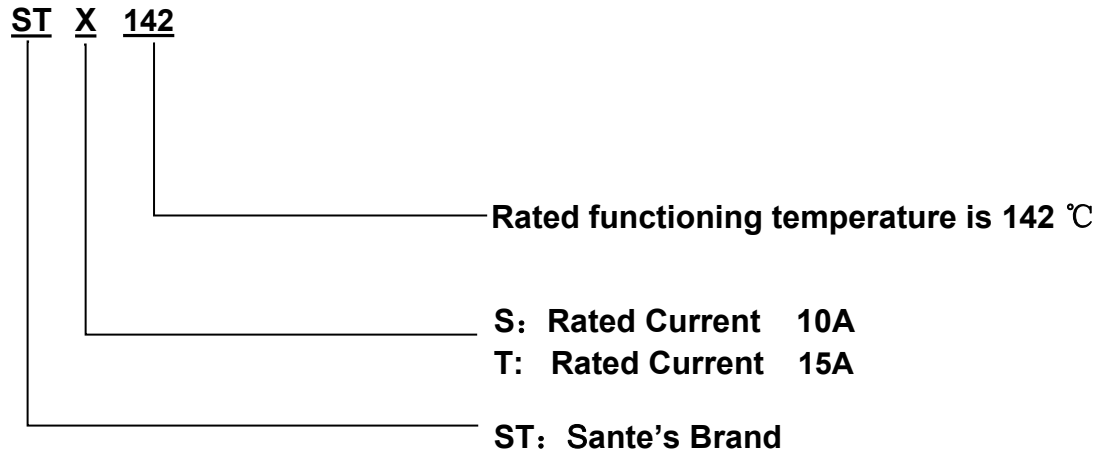
### 1.1 General Information

- Designed to EN 60691 (73°C – 216°C)
- RoHS compliant and HF

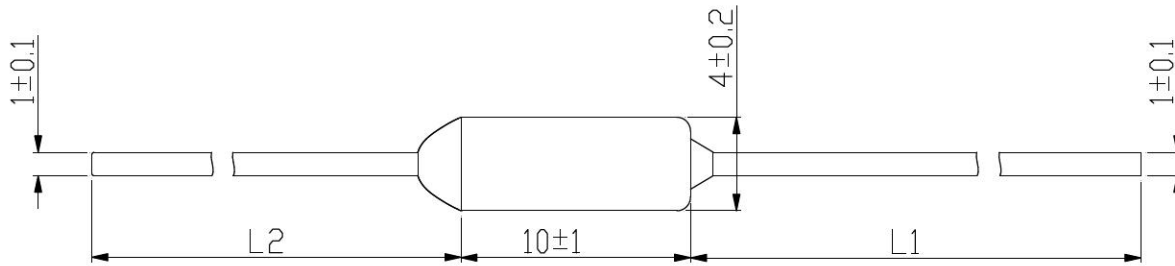
## 2. Agency Approvals

Agency	Agency File Number
TUV	R 50458082

## 3. Part Numbering System



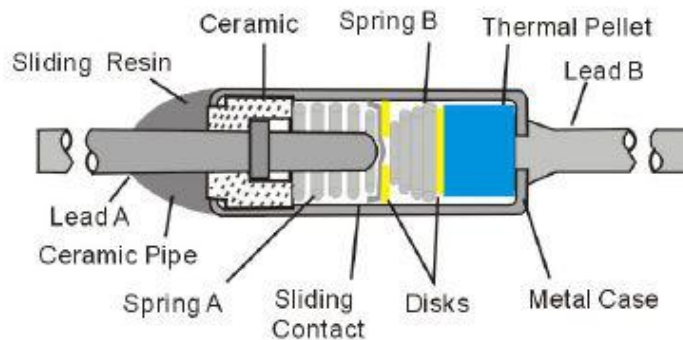
#### 4. MECHANICAL SPECIFICATIONS



$L_1=34\text{mm} \pm 3\text{mm}$ ,  $L_2=20\text{mm} \pm 3\text{mm}$  or  $34\text{mm} \pm 3\text{mm}$ . The length will be customized according to customer needs.

#### 5. Operating Principle

##### Before Operation



Loaded the metal shell with movable electrode ,spring and heat-variable fusion cake for RY series thermal fuse. Spring B is encased into it on the state of compression, that's can make spring B use copper backing to stand up to movable electrode in order to contact with lead A. In the state of normal times, current will be connect with lead B through lead A, movable electrode and metal shell

## X-ON Electronics

Largest Supplier of Electrical and Electronic Components

*Click to view similar products for [Thermal Cut-offs](#) category:*

*Click to view products by [SANTE](#) manufacturer:*

Other Similar products are found below :

[10A121250V](#) [10A133250V](#) [10A172250V](#) [10A184250V](#) [TB-1022A250T001BG](#) [TE-09410A250T001BG](#) [TE-09910A250T001BG](#) [TE-10310A250T001BG](#) [TE-12110A250T001BG](#) [TE-15210A250T001BG](#) [TG-11315A250T001BG](#) [TG-14215A250T002BG](#) [TG-14715A250T001BG](#) [TG-15215A250T002BG](#) [TG-16915A250T001BG](#) [TG-16915A250T002BG](#) [TG-18415A250T002BG](#) [TG-24015A250T002BG](#) [B1002B/60C/NO](#) [TB-1152A250T001BG](#) [TB-1252A250T001BG](#) [TB-1302A250T001BG](#) [TE-11310A250T001BG](#) [TE-11310A250T002BG](#) [TE-12810A250T001BG](#) [TE-14710A250T001BG](#) [TE-18710A250T001BG](#) [TE-21610A250T001BG](#) [TG-09415A250T001BG](#) [TG-10315A250T001BG](#) [TG-10315A250T002BG](#) [TG-11315A250T002BG](#) [TG-12815A250T002BG](#) [TG-15215A250T001BG](#) [TG-15215A250T003BG](#) [TU-1153A250T001BG](#)