

产品规格书

PRODUCT SPECIFICATION

客户名称：
CUSTOMER:

产品名称：

PRODUCT NAME: 气体放电管

型号：

MODEL: 5.5*6

规格：

SPECIFICATION: 1000-3600V

料号：

PART NO.:

供应商： 惠州市三特电器有限公司

SUPPLIER: Huizhou Sante Electrical Appliance Co. Ltd.

地址： 惠州市博罗县罗阳镇义和大小塘村小塘组

ADDRESS: Boluo County, Huizhou City, Luo Yang Zhen Yi Tang Cun Tang and the size of small group

TEL: 0752-6623066

[Http:www.stfuse.com](http://www.stfuse.com)

FAX: 0752-6637866

E-mail:2744550951@qq.com

编制	审核	批准
PREPARED BY	CHECKED BY	APPROVED BY

承认	审核	批准
SIGNATURE	CHECKED BY	APPROVED BY

供方签章：

SUPPLIER:

需方签章：

CUSTOMER:

日期：2018-9-10

DATE: 2018-9-10

日期：

DATE:

■ 特性

Features

1. 符合 RoHS
RoHS compliant
2. 无引线型或轴向引线型可选
Available with or without leads
3. 工作温度范围: $-40^{\circ}\text{C} \sim +85^{\circ}\text{C}$
Operating temperature range: $-40^{\circ}\text{C} \sim +85^{\circ}\text{C}$
4. 储存温度范围: $-40^{\circ}\text{C} \sim +115^{\circ}\text{C}$
Storage temperature range: $-40^{\circ}\text{C} \sim +115^{\circ}\text{C}$
5. 安规认证: UL/cUL E496056
Agency recognition: UL/cUL E496056

■ 用途

Applications

1. 冰箱
Refrigerator
2. 洗衣机
Washing machine
3. 空调
Air condition
4. 通信设备
Telecommunication or telephone system
5. 开关电源
Switching power supply
6. 变频器
Inverter

■ 型号说明:

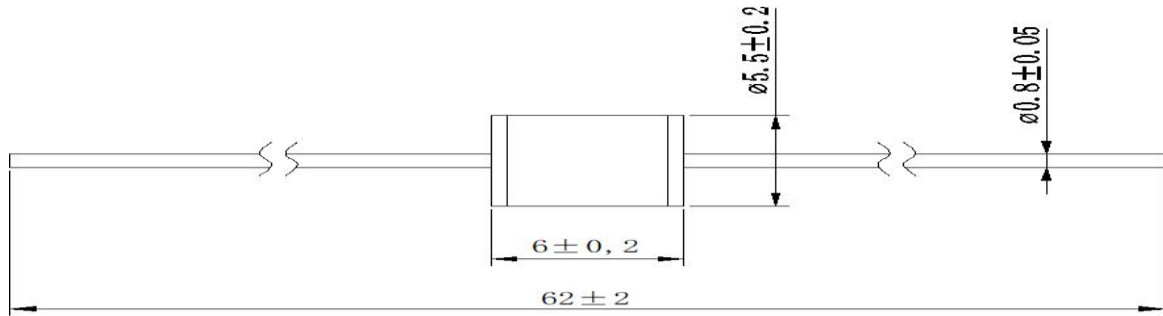
Part Numbers System:

5S L 3600 M - X
① ② ③ ④ ⑤

1. 尺寸: $\phi 5.5 \times 6\text{mm}$
Size: $\phi 5.5 \times 6\text{mm}$
2. 引线形式: L-轴向引线 S-无引线
Lead Wire Style: L-Axial Lead, S-No Lead
3. 直流击穿电压: 1000-3600V
DC Spark-over Voltage: 1000-3600V
4. 最大冲击放电电流(8/20 μs): M:3KA
Max. Impulse Discharge Current (8/20 μs): M:3KA
5. 客户代码, 可能是一位数字, 字母或空白
Customer Code, maybe any one digit, letter or blank

■ 产品尺寸: (单位: mm)

Product Dimensions (Unit: mm)

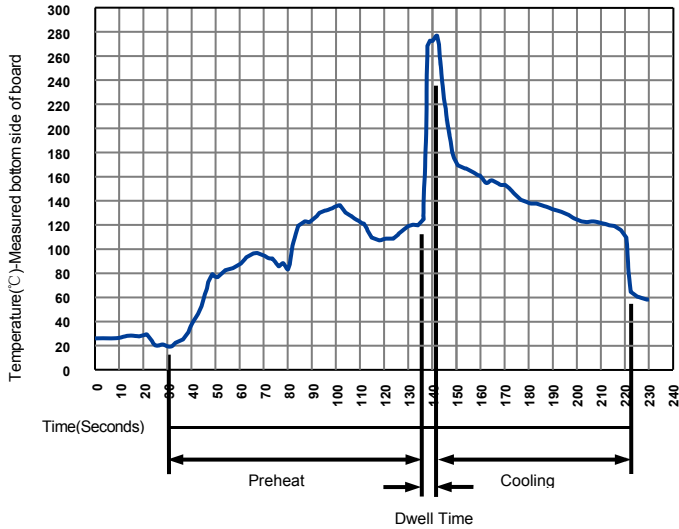


■ 电气特性

Characteristics

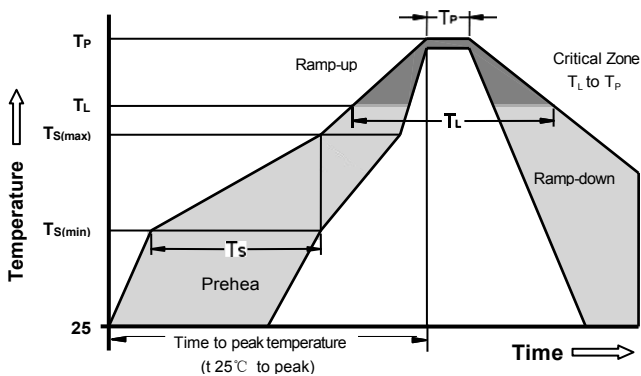
Part Number		DC Spark-over Voltage ¹⁾²⁾ @100V/S	Impulse Spark-over Voltage		Insulation Resistance ³⁾	Capacitance @1MHz	Glow Voltage @10mA	Arc Voltage @1A	AC withstand voltage @0.5mA 1Min	Life Ratings		
			100V/μS	1KV/μS						Impulse Discharge Current @8/20μS		AC Discharge Current @50Hz 1S
			Max	Max						Nominal ±5 times	Max 1 time	Nominal 5 times
DIP	SMD	V	V	V	GΩ	pF	V	V	V	KA	KA	A
5SL1000M-5	5SS1000M-5	1000±20%	1600	1800	1	1	160	15	500	3	4	3
5SL1200M-5	5SS1200M-5	1200±20%	1800	2000	1	1	160	15	600	3	4	3
5SL1400M-5	5SS1400M-5	1400±20%	2200	2400	1	1	235	18	700	3	3.5	2
5SL1500M-5	5SS1500M-5	1500±20%	2300	2500	1	1	235	18	750	3	3.5	2
5SL1600M-5	5SS1600M-5	1600±20%	2400	2600	1	1	235	18	800	3	3.5	2
5SL2000M-5	5SS2000M-5	2000±20%	2800	3000	1	1	260	30	1000	3	3.5	2
5SL2400M-5	5SS2400M-5	2400±20%	3300	3500	1	1	260	30	1300	2	3	2
5SL2700M-5	5SS2700M-5	2700±20%	3400	3600	1	1	260	30	1400	2	3	2
5SL3000M-5	5SS3000M-5	3000±20%	3800	4000	1	1	260	30	1600	2	3	2
5SL3500M-5	5SS3500M-5	3500±20%	4300	4500	1	1	260	30	1800	2	3	2
5SL3600M-5	5SS3600M-5	3600±20%	4400	4600	1	1	260	30	1900	2	3	2
Glow to Arc transition Current.....						~0.3A						
Weight.....						~0.82g						
Operation and storage temperature.....						-40~85°C						
Marking, black.....						 xxxx -Nominal voltage						

Soldering Parameters - Wave soldering (Thru-Hole Devices)



Wave Soldering Condition		Pb-Free assembly
Preheat	Temperature Min	100°C
	Temperature Max	150°C
	Time (Min to Max)	60-180 Seconds
Solder Pot Temperature		280°C Max
Solder Dwell Time		2-5 Seconds

Soldering Parameters - Reflow Soldering (Surface Mount Devices)



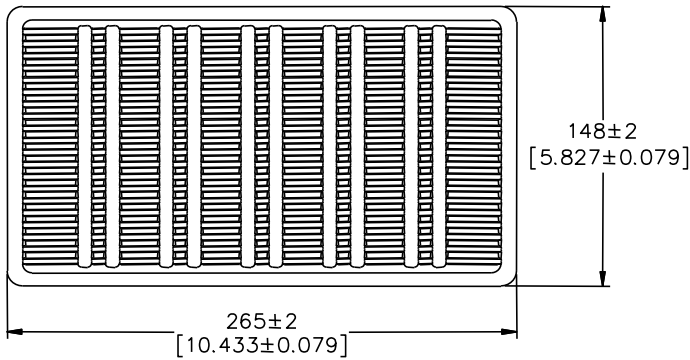
Reflow Condition		Pb - Free assembly
Preheat	-Temperature Min ($T_{s(\min)}$)	150°C
	-Temperature Max ($T_{s(\max)}$)	200°C
	- Time (min to max) (t_s)	60 -180 Seconds
Average ramp up rate (Liquids Temp T_L) to peak		3°C/second max
$T_{s(\max)}$ to T_L - Ramp-up Rate		5°C/second max
Reflow	- Temperature (T_L) (Liquids)	217°C
	- Time (min to max) (t_s)	60 -150 Seconds
Peak Temperature (T_P)		260 +0/-5°C
Time within 5°C of actual peak Temperature (t_p)		10 - 30 Seconds
Ramp-down Rate		6°C/second max
Time 25°C to peak Temperature (T_P)		8 minutes Max
Do not exceed		260°C

■ 包装 (单位: mm/inch)

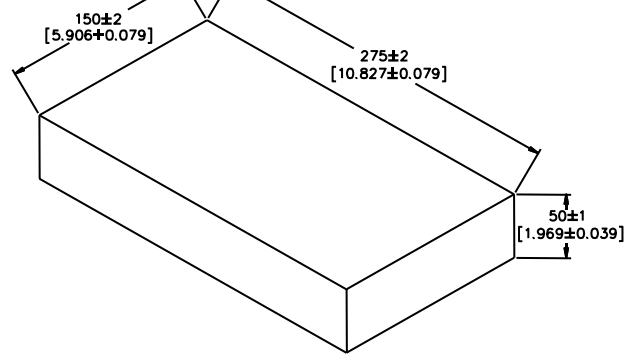
Packaging (mm/inch)

Axial Packaging (Bulk)

Plastic Tray



Inner box



Packaging Quantity:

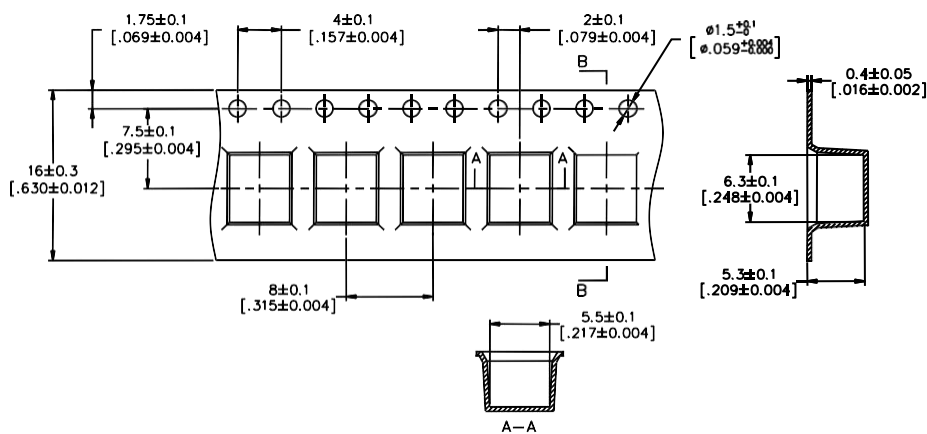
1,00 PCS per Plastic Tray

5 Plastic Trays per inner box

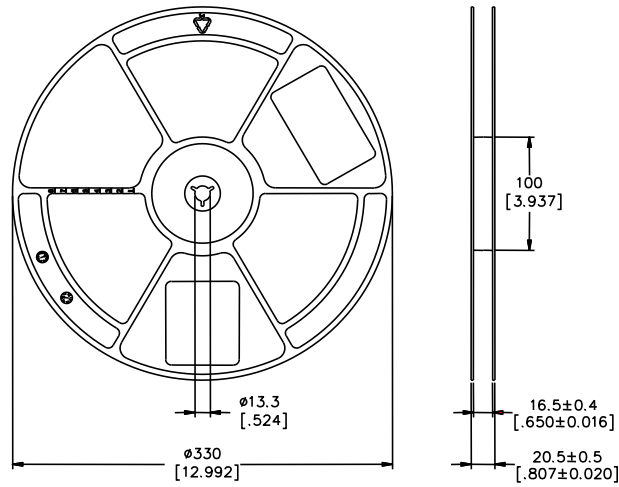
500 PCS per inner box

SMD Packaging (Tape & Reel)

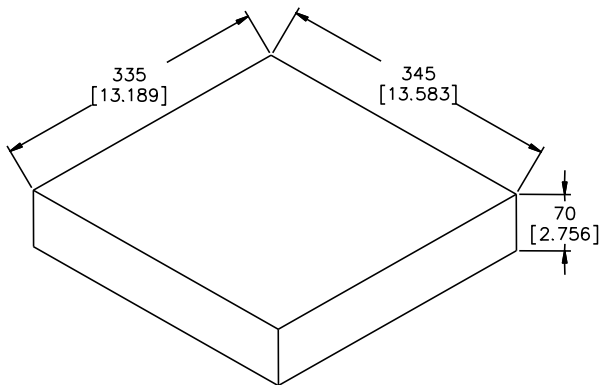
Tape



Reel



Inner box



Packaging Quantity:

1,000 PCS per reel (13")

3 reels per inner box

3,000 PCS per inner box

仓库储存条件

Warehouse Storage Conditions of Products

储存条件:

Storage Conditions:

1. 储存温度: $-10^{\circ}\text{C} \sim +40^{\circ}\text{C}$

Storage Temperature: $-10^{\circ}\text{C} \sim +40^{\circ}\text{C}$

2. 相对湿度: $\leq 75\% \text{RH}$

Relative Humidity: $\leq 75\% \text{RH}$

3. 不要将本产品存放在有腐蚀性气体或是阳光直接照射的环境中

Keep away from corrosive atmosphere and sunlight

储存期限: 1 年

Period of Storage: 1 year

X-ON Electronics

Largest Supplier of Electrical and Electronic Components

Click to view similar products for [Gas Discharge Tubes - GDTs / Gas Plasma Arrestors](#) category:

Click to view products by [SANTE](#) manufacturer:

Other Similar products are found below :

[PMT1023004](#) [PMT1025001](#) [PMT1035004](#) [PMT1040004](#) [PMT809006](#) [CG2250](#) [CG2800](#) [CG31.5L](#) [GT-SMD181240012-TR](#) [WPGT-2N145B6L](#) [WPGT-2N230B6L](#) [WPGT-2N470B6L](#) [WPGT-2R470B6L](#) [WPGT-2RM230A6L](#) [WPGT-2RM350A6L](#) [WPGT-2RM70A6L](#) [WPGT-2RM90A6L](#) [WPGT-2S145](#) [WPGT-2S350](#) [WPGT-2S470](#) [WPGT-3R350CF](#) [WPGT-3R350G1](#) [WPGT-3R90G1](#) [WPGT-3R75G1](#) [WPGT-3R470G1](#) [WPGT-3R250C](#) [WPGT-3R230G1](#) [WPGT-2S230](#) [WPGT-2RM470A6L](#) [WPGT-2RM145A6L](#) [WPGT-2R3000B8L](#) [WPGT-2R2700B8L](#) [WPGT-2R1000B8L](#) [WPGT-2N90B6L](#) [WPGT-2N70B6L](#) [WPGT-2N350B6L](#) [WPGT-2N230B6L1](#) [CG90](#) [CG2230](#) [CG2145](#) [CG21000](#) [GT-SMD181215012-TR](#) [T61-C350X](#) [9071.99.0547 \(73_Z-0-0-547\)](#) [B88069X6940B152](#) [9071.99.0052\(73_Z-0-0-52\)](#)
[B88069X1973T902](#) [A9L15692](#) [C50-0-255](#) [A9L16294](#)