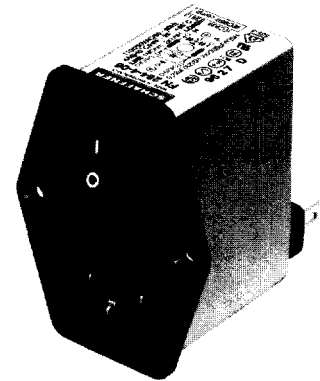


Compact power entry module

FN 280

This general-purpose module family includes both switch and fuse(s), providing a convenient and compact housing. FN 280 is suitable for a large number of industrial and laboratory equipment applications.

- current rating from 1 to 6A
- IEC 950-compliant
- general-purpose application
- convenient, highly-integrated module
- one or two fuses (Ø5 x 20mm)
- easy-access fuse drawer
- dual-pole rocker switch
- optional earth line choke (E type)
- optional medical version (B type)



See Mechanical Data (page 45) for details of housings and output connections.

Filter selection table

Choose the family **FN xxx** with the required body style and features, and add **-??** to determine current rating, and **/??** for output connections. Example: FN 284-1/06 is a horizontal screw-mounting filter with twin fuses, rated for 1A, with fast-on outputs.

Approvals



Family	Current ratings A at 40°C (25°)				Output	Housing style			Fuse(s) Nbr.
	1 (1.2)	2 (2.4)	4 (4.8)	6 (7.2)					
FN 281 -?? /??	-1	-2	-4	-6	/06	✓			1
FN 282 -?? /??	-1	-2	-4	-6	/06	✓			2
FN 283 -?? /??	-1	-2	-4	-6	/06		✓		1
FN 284 -?? /??	-1	-2	-4	-6	/06		✓		2
FN 285 -?? /??	-1	-2	-4	-6	/06			✓	1
FN 286 -?? /??	-1	-2	-4	-6	/06			✓	2
Inductance L mH									
	7.5	2	1	0.45					

Additional specifications

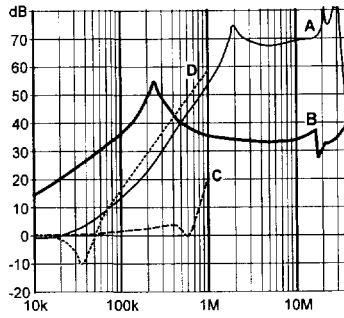
Filter type	Capacitance		Maximum leakage µA/phase	Res. R MΩ	Earth L _E mH	Weight g	Maximum operating voltage		Operating frequency Hz	Hipot test voltage	
	C _x nF	C _y nF					VAC	Hz		PN→E VAC	P→N VAC
All standard types	220	2.2	190	1	-	140	250	50/60	50 to 400	2000	760
B types (medical)	220	-	2	1	-	140	250	50/60	50 to 400	2500	760
E types (earth line choke)	220	2.2	190	1	0.4	145	250	50/60	50 to 400	2000	760

MTBF at 40°C, 230V, per Mil-HB-217F: 1,500,000 hours

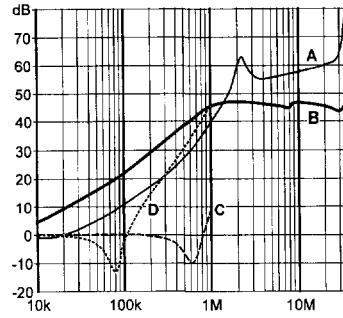
Insertion loss

Per CISPR 17; A = 50Ω/50Ω sym, B = 50Ω/50Ω asym, C = 0.1Ω/100Ω sym, D = 100Ω/0.1Ω sym

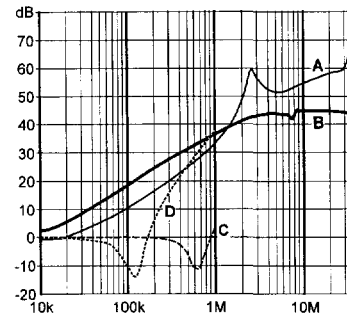
1 amp types



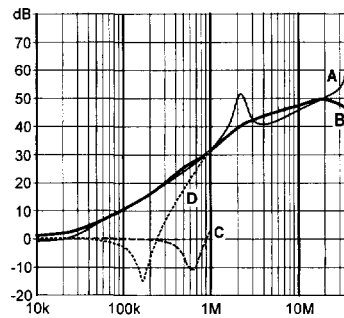
2 amp types



4 amp types

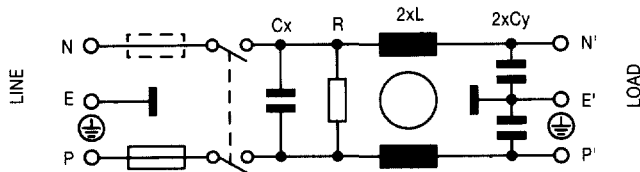


6 amp types

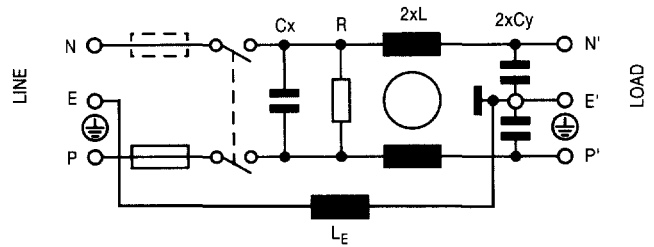


Electrical schematics

FN 281/283/285
FN 282/284/286 (have second fuse, shown dotted)



FN 280 E types
(second fuse shown dotted)



See tables for component values

X-ON Electronics

Largest Supplier of Electrical and Electronic Components

Click to view similar products for [AC Power Entry Modules](#) category:

Click to view products by [Schaffner](#) manufacturer:

Other Similar products are found below :

[0098.0050](#) [6167.0002](#) [6609100-2](#) [7-6609955-2](#) [FKI2-50-6/M5](#) [FN361-6-06](#) [FN389-4-22](#) [FN9226B-6-02](#) [FN9233S1-10-06](#) [FN9233S1-8-06](#)
[FN9233S1B-8-06](#) [FN9233S1R-1-06](#) [FN9233S1R-12-06](#) [FN9233SB-1-06](#) [FN9233SB-12-06](#) [FN9233SB-8-06](#) [FN9233SR-10-06](#) [FN9244B-15-06HI](#) [FN9244EB-3-06](#) [FN9244EB-8-06](#) [FN9244ER-15-06](#) [FN9244ER-8-06](#) [FN9244ES1-8-06](#) [FN9244ESB-8-06](#) [FN9244R-12-06](#)
[FN9244S1-12-06](#) [FN9244S1R-3-06](#) [FN9244SB-8-06](#) [FN9244SR-6-06](#) [FN9244U-3-06](#) [FN9244U-8-06](#) [8-6609940-2](#) [PE00SSSXB](#) [Fuse-H-EUR-1](#) [Fuse-H-USA-1](#) [PM00XD000](#) [A-0701-HT-H](#) [15EJMS8](#) [1-6609941-2](#) [200JM6-2](#) [CA121003-6](#) [SK-1015\(F1-5\)](#) [161-R3015-E](#) [1-6609153-2](#) [FN323-1-05](#) [FN9233B-8-06](#) [FN9233EB-1-06](#) [FN9233ES1R-10-06](#) [FN9233R-12-06](#) [FN9233S-10-06](#)