

Spring plunger

FSTE G1/2-AG 90

Part no.:10.01.02.00576

<https://www.schmalz.com/10.01.02.00576>



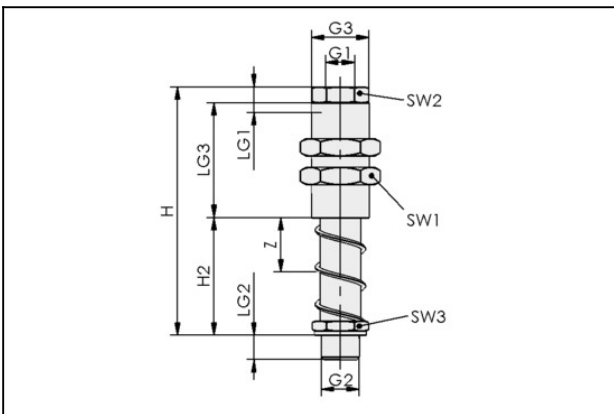
Homepage > Vacuum Technology for Automation > Vacuum Components > Mounting Elements > Spring plunger > Spring Plungers FSTE > FSTE G1/2-AG 90

Spring plunger with damping and height compensation



Suction cup connection: G1/2"-M
Vacuum connection: G3/8"-F
Spring stroke Z: 90 mm

Design Data



Attribute	Value
G1	G3/8"-IG
G2	G1/2"-M
G3	M30x1.5-M
H	188.5 mm
H2	125.5 mm
LG1	13 mm
LG2	10.5 mm
LG3	55 mm
SW1	36 mm
SW2	24 mm
SW3	24 mm
Z (Stroke)	90 mm

Spring plunger

FSTE G1/2-AG 90

Part no.:10.01.02.00576

<https://www.schmalz.com/10.01.02.00576>

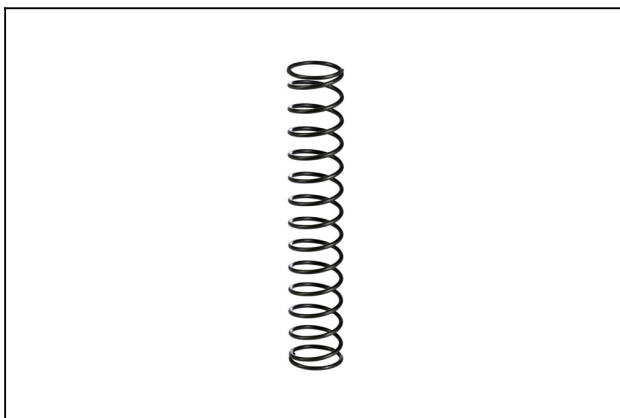


Technical Data

Attribute	Value
Spring rate	1.072 N/mm
Spring pretension	24.38 N
Spring force, center	75.3 N
Vertical load	4,900 N
Horizontal load	730 N
Weight	544 g
Operating temperature	0 ... 80 °C

Note: Spring force: Referred to 50% of operating stroke Static loading: Maximum static loading
Horizontal stress: The specification of the horizontal stress refers to the lower edge of the plunger with extended spring. It is a maximum static stress and it impairs the spring compression and extension in horizontal position

Spare Parts



DRUCK-FED 2x23 139.5 1.072

Part no.20.08.02.00097

Pressure spring

Wire size: 2 mm

Diameter: 23 mm

Length L: 139.5 mm

Spring rate: 1.072 N/mm

Accessories

Spring plunger

FSTE G1/2-AG 90

Part no.:10.01.02.00576

<https://www.schmalz.com/10.01.02.00576>



FLK G1/2-IG G1/2-AG

Part no.10.01.03.00175

Flexible suction cup mounting for adaptation to sloping surfaces

Thread G1: G1/2"-F

Thread G2: G1/2"-M

Ambient temperature: 0 ... 70 °C



FLK G1/2-IG G1/2-AG V

Part no.10.01.03.00207

Flexible suction cup mounting for adaptation to sloping surfaces

Thread G1: G1/2"-F

Thread G2: G1/2"-M

Shape: Reinforced

Ambient temperature: 0 ... 70 °C



KGL G1/2-IG G1/2-AG

Part no.10.01.03.00111

Suction cup mounting with joint for adaptation to sloping surfaces

Thread G1: G1/2"-F

Thread G2: G1/2"-M

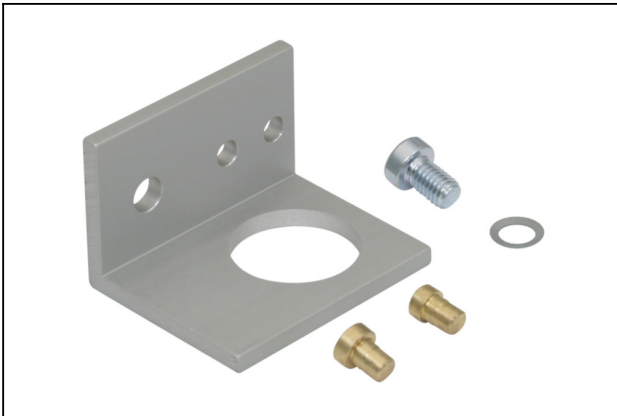
Height H: 40 mm

Spring plunger

FSTE G1/2-AG 90

Part no.:10.01.02.00576

<https://www.schmalz.com/10.01.02.00576>



HTR-STA 62 1N D30 WI

Part no.10.08.03.00148

Holder for flexible mounting of suction cups/spring plungers on sections

Length L: 62 mm

Cross-beam connection: Sliding block

Suction cup or spring plunger conn.:

Contour D30-G1/2

Shape: angled



HTR-ST5 40x40 D30 WI

Part no.10.08.03.00090

Holder for flexible mounting of suction cups/spring plungers on square tubes

Cross-beam connection: 40x40

Suction cup or spring plunger conn.:

Contour D30-G1/2

Shape: angled



HTR-ST5 50x50 D30 WI

Part no.10.08.03.00091

Holder for flexible mounting of suction cups/spring plungers on square tubes

Cross-beam connection: 50x50

Suction cup or spring plunger conn.:

Contour D30-G1/2

Shape: angled

Spring plunger

FSTE G1/2-AG 90

Part no.:10.01.02.00576

<https://www.schmalz.com/10.01.02.00576>



HTR-STS 60x60 D30 WI

Part no.10.08.03.00092

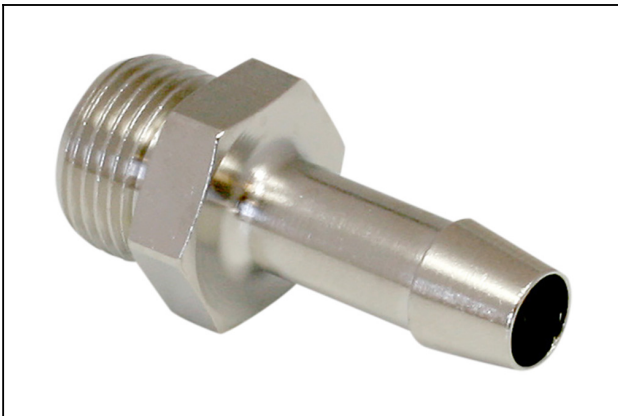
Holder for flexible mounting of suction cups/spring plungers on square tubes

Cross-beam connection: 60x60

Suction cup or spring plunger conn.:

Contour D30-G1/2

Shape: angled



ST G3/8-AG 9 MS-V

Part no.10.08.03.00159

Hose sleeve

Thread G1: G3/8"-M

Internal hose diameter: 9 mm

Material: Brass

Surface: nickel plated



ST G3/8-AG 13 MS-V

Part no.10.08.03.00160

Hose sleeve

Thread G1: G3/8"-M

Internal hose diameter: 13 mm

Material: Brass

Surface: nickel plated

Spring plunger

FSTE G1/2-AG 90

Part no.:10.01.02.00576

<https://www.schmalz.com/10.01.02.00576>



STV-GE G3/8-AG 8

Part no.10.08.02.00237

Push-in Fitting, straight

Thread G1: G3/8"-M

External hose diameter: 8 mm

Material: Brass

Surface: nickel plated

Ambient temperature: -20 ... 80 °C



STV-GE G3/8-AG 10

Part no.10.08.02.00252

Push-in Fitting, straight

Thread G1: G3/8"-M

External hose diameter: 10 mm

Material: Brass

Surface: nickel plated

Ambient temperature: -20 ... 80 °C



STV-GE G3/8-AG 12

Part no.10.08.02.00209

Push-in Fitting, straight

Thread G1: G3/8"-M

External hose diameter: 12 mm

Material: Brass

Surface: nickel plated

Ambient temperature: -20 ... 80 °C

Spring plunger

FSTE G1/2-AG 90

Part no.:10.01.02.00576

<https://www.schmalz.com/10.01.02.00576>



STV-GE G3/8-AG 14

Part no.10.08.02.00211

Push-in Fitting, straight

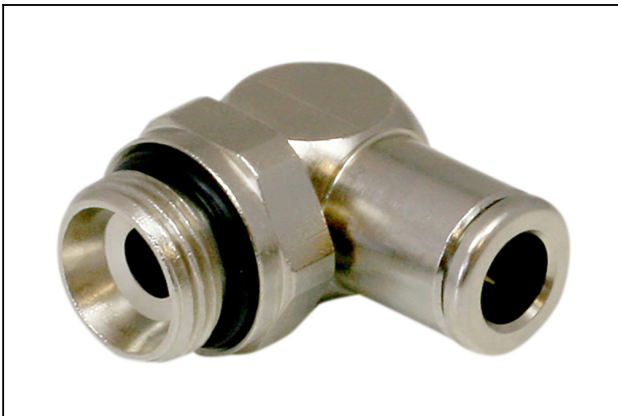
Thread G1: G3/8"-M

External hose diameter: 14 mm

Material: Brass

Surface: nickel plated

Ambient temperature: -20 ... 80 °C



STV-W G3/8-AG 8

Part no.10.08.02.00236

Push-in Fitting, swivelling elbow

Thread G1: G3/8"-M

External hose diameter: 8 mm

Material: Brass, nickel-plated

Ambient temperature: -20 ... 80 °C



STV-W G3/8-AG 10

Part no.10.08.02.00255

Push-in Fitting, swivelling elbow

Thread G1: G3/8"-M

External hose diameter: 10 mm

Material: Brass, nickel-plated

Ambient temperature: -20 ... 80 °C

Spring plunger

FSTE G1/2-AG 90

Part no.:10.01.02.00576

<https://www.schmalz.com/10.01.02.00576>



STV-W G3/8-AG 12

Part no.10.08.02.00163

Push-in Fitting, swivelling elbow

Thread G1: G3/8"-M

External hose diameter: 12 mm

Material: Brass, nickel-plated

Ambient temperature: -20 ... 80 °C



STV-WF G3/8-AG 8

Part no.10.08.02.00234

Push-in Fitting, swivelling and lockable

Thread G1: G3/8"-M

External hose diameter: 8 mm

Material: Brass, nickel-plated

Ambient temperature: -10 ... 70 °C



STV-WF G3/8-AG 10

Part no.10.08.02.00259

Push-in Fitting, swivelling and lockable

Thread G1: G3/8"-M

External hose diameter: 10 mm

Material: Brass, nickel-plated

Ambient temperature: -10 ... 70 °C

X-ON Electronics

Largest Supplier of Electrical and Electronic Components

Click to view similar products for [Bench Top Tools](#) category:

Click to view products by [SCHMALZ](#) manufacturer:

Other Similar products are found below :

[0027](#) [6104-201-2102](#) [6104-201-2502](#) [6-1372442-6](#) [62500-1584](#) [63801-7252](#) [63801-7269](#) [69002-5525](#) [691667-1](#) [768539-1](#) [854130-1](#)
[854946-2](#) [856203-1](#) [904449-1](#) [9-22280-9](#) [986096-2](#) [992438-3](#) [1-21000-3](#) [1-21000-4](#) [1-21000-1](#) [1-25022-4](#) [1302263353](#) [1424264-1](#)
[1424267-1](#) [1428211-1](#) [1-455755-6](#) [1752324-1](#) [1752744-1](#) [18023-9](#) [189763-1](#) [1901726-1](#) [1954222-1](#) [2079747-1](#) [21001-2](#) [2119083-1](#)
[2119085-1](#) [2119371-1](#) [2161362-2](#) [2161930-1](#) [2217088-2](#) [2217339-1](#) [2217347-1](#) [22281-9](#) [22374-7](#) [240825-4](#) [992342-2](#) [2030790-2](#) [2063796-1](#) [2063799-2](#) [2119092-1](#)