

Matrix Plate

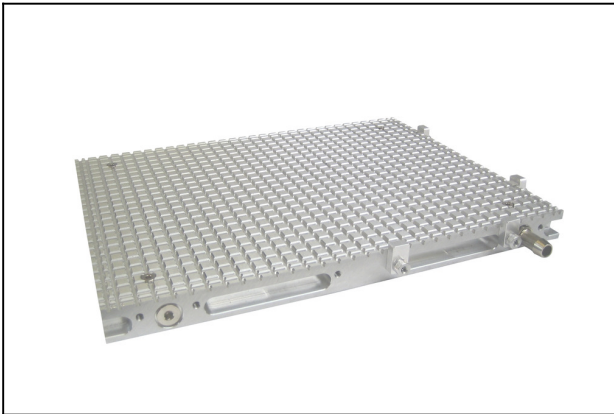
MPL 400x300x28 12.5x12.5 3x3

Part no.:10.01.27.00103

<https://www.schmalz.com/10.01.27.00103>

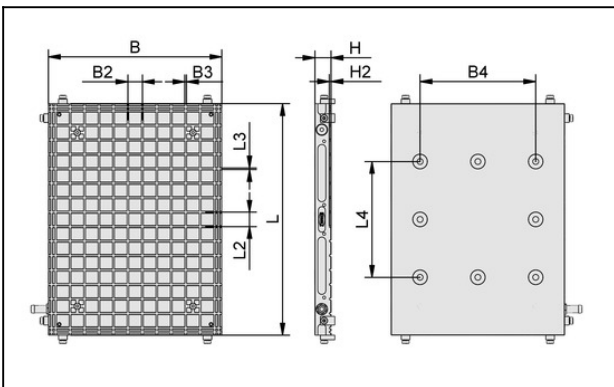
Homepage > Vacuum Clamping Technology > Clamping Equipment for Metal and Plastic Processing > Clamping Systems Matrix Plate > Matrix-Plate MPL > MPL 400x300x28 12.5x12.5 3x3

Matrix-Plate for metalworking



Length L: 400 mm
Width B: 300 mm
grid: 12.5 x 12.5 mm
Slot: 3 x 3 mm

Design Data



Attribute	Value
B	300 mm
B2	9.5 mm
B3	3 mm
B4	200 mm
H	28 mm
H2	3 mm
L	400 mm
L2	9.5 mm
L3	3 mm
L4	200 mm

Matrix Plate

MPL 400x300x28 12.5x12.5 3x3

Part no.:10.01.27.00103

<https://www.schmalz.com/10.01.27.00103>

Technical Data

Attribute	Value
Weight	8.476 kg

Spare Parts



DI-SCHN 3 MOS CR-20

Part no.10.07.04.00088

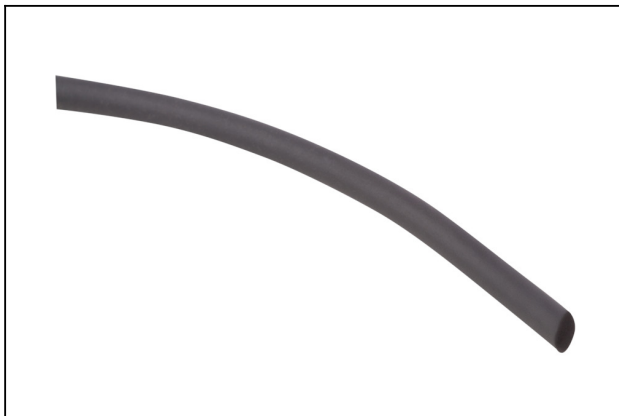
Sealing cord

External diameter D: 3 mm

Material-Type: Foam rubber

Sealing material: Chloroprene CR

Material hardness: 20 °Sh



DI-SCHN 3.5 MOS CR-20

Part no.10.07.04.00091

Sealing cord

External diameter D: 3.5 mm

Material-Type: Foam rubber

Sealing material: Chloroprene CR

Material hardness: 20 °Sh

Matrix Plate

MPL 400x300x28 12.5x12.5 3x3

Part no.:10.01.27.00103

<https://www.schmalz.com/10.01.27.00103>



REIB-INS 18x18 MPL

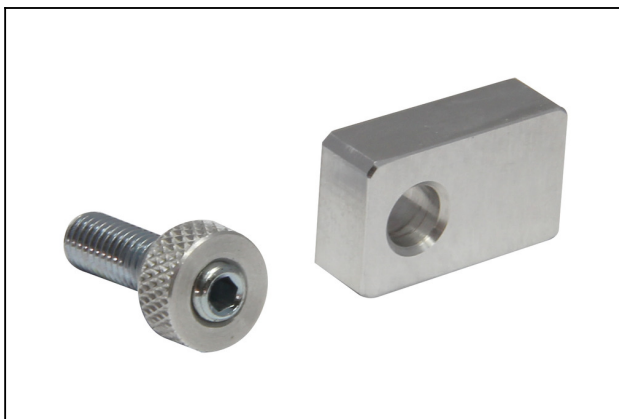
Part no.10.01.27.00060

Friction insert

External diameter D: 18 mm

Height H: 18 mm

for: Matrix-Plate



ANSG-MPL 8x15x25

Part no.10.01.27.00079

Stop for Matrix-Plate

Length L: 8 mm

Width B: 15 mm

Height H: 25 mm

Accessories



SPAN-PRA-M12-MPL

Part no.10.01.27.00009

Clamping claw

Length L: 80 mm

Width B: 45 mm

Height H: 16.7 mm

Type: M12

for: Matrix-Plate

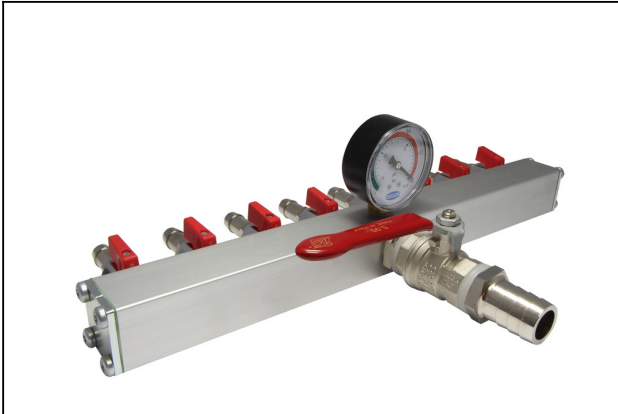
Weight: 93.1 kg

Matrix Plate

MPL 400x300x28 12.5x12.5 3x3

Part no.:10.01.27.00103

<https://www.schmalz.com/10.01.27.00103>



VTR-ZF ST-Dn12 8xG1/4 1TN MAN/KVZ

Part no.10.01.27.00126

Vacuum distributor with hose connector

Connection: Fem. hose conn Dn=12

Shape: 8 x thread G1/4"-F

Shape: with 1 T-slot

with: Manometer and Ball cock



SET VC-MPL

Part no.10.01.27.00456

Connection set for hose connection

for: Matrix-Plate



SSB 16-27 ST-VZ

Part no.10.07.10.00002

Hose clamp for securing smooth hoses

Clamping range: 16.0 ... 27.0 mm

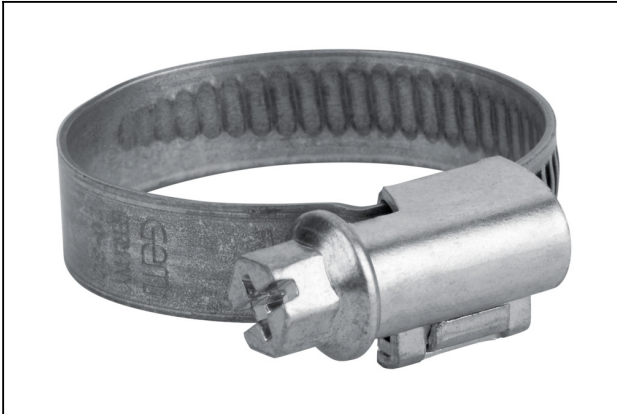
Material: Steel galvanised

Matrix Plate

MPL 400x300x28 12.5x12.5 3x3

Part no.:10.01.27.00103

<https://www.schmalz.com/10.01.27.00103>



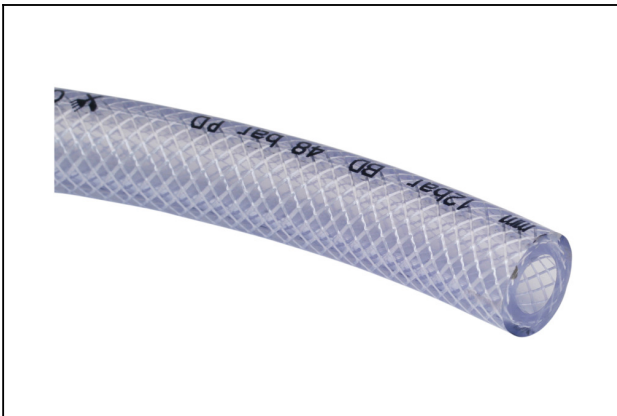
SSB 20-32 ST-VZ

Part no.10.07.10.00003

Hose clamp for securing smooth hoses

Clamping range: 20.0 ... 32.0 mm

Material: Steel galvanised



VSL 21-12 PVC-G

Part no.10.07.09.00006

Hose for vacuum and compressed-air systems

External diameter D: 21 mm

Internal diameter d: 12 mm

Length (max): 50 m

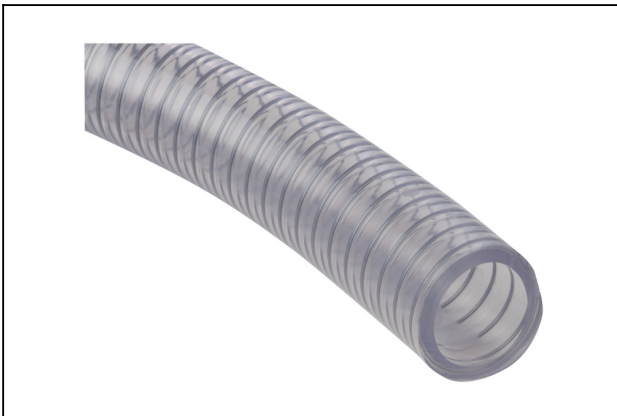
Material: PVC, with textile layer

Installation radius (min): 80 mm

Pressure range (operating pressure):

-0.95 ... 10.00 bar

Ambient temperature: -20 ... 70 °C



VSL 33-25 PVC-DS

Part no.10.07.09.00041

Hose for vacuum and compressed-air systems

External diameter D: 33 mm

Internal diameter d: 25 mm

Length (max): 50 m

Material: PVC, with wire spiral

Installation radius (min): 95 mm

Pressure range (operating pressure):

-0.85 ... 4.00 bar

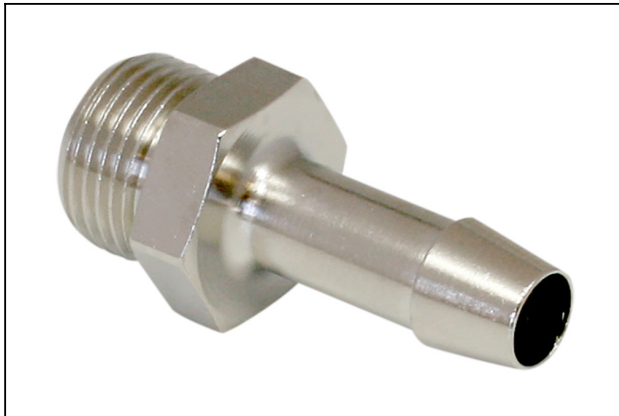
Ambient temperature: -20 ... 70 °C

Matrix Plate

MPL 400x300x28 12.5x12.5 3x3

Part no.:10.01.27.00103

<https://www.schmalz.com/10.01.27.00103>



ST G1/4-AG 13 MS-V

Part no.10.08.03.00158

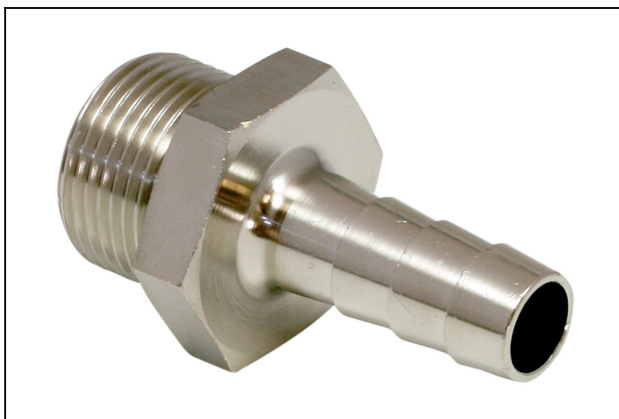
Hose sleeve

Thread G1: G1/4"-M

Internal hose diameter: 13 mm

Material: Brass

Surface: nickel plated



ST G3/4-AG 13 MS-V

Part no.10.08.03.00164

Hose sleeve

Thread G1: G3/4"-M

Internal hose diameter: 13 mm

Material: Brass

Surface: nickel plated



ST G3/4-AG 25 MS-V

Part no.10.08.03.00166

Hose sleeve

Thread G1: G3/4"-M

Internal hose diameter: 25 mm

Material: Brass

Surface: nickel plated

X-ON Electronics

Largest Supplier of Electrical and Electronic Components

Click to view similar products for [Bench Top Tools](#) category:

Click to view products by [SCHMALZ](#) manufacturer:

Other Similar products are found below :

[0027](#) [6104-201-2102](#) [6104-201-2502](#) [6-1372442-6](#) [62500-1584](#) [63801-7252](#) [63801-7269](#) [69002-5525](#) [691667-1](#) [768539-1](#) [854130-1](#)
[854946-2](#) [856203-1](#) [904449-1](#) [9-22280-9](#) [986096-2](#) [992438-3](#) [1-21000-3](#) [1-21000-4](#) [1-21000-1](#) [1-25022-4](#) [1302263353](#) [1424264-1](#)
[1424267-1](#) [1428211-1](#) [1-455755-6](#) [1752324-1](#) [1752744-1](#) [18023-9](#) [189763-1](#) [1901726-1](#) [1954222-1](#) [2079747-1](#) [21001-2](#) [2119083-1](#)
[2119085-1](#) [2119371-1](#) [2161362-2](#) [2161930-1](#) [2217088-2](#) [2217339-1](#) [2217347-1](#) [22281-9](#) [22374-7](#) [240825-4](#) [992342-2](#) [2030790-2](#) [2063796-1](#) [2063799-2](#) [2119092-1](#)