

## Compact ejector SMPi 15 IMP RD M12-5

Part no.:10.02.02.03341

<https://www.schmalz.com/10.02.02.03341>

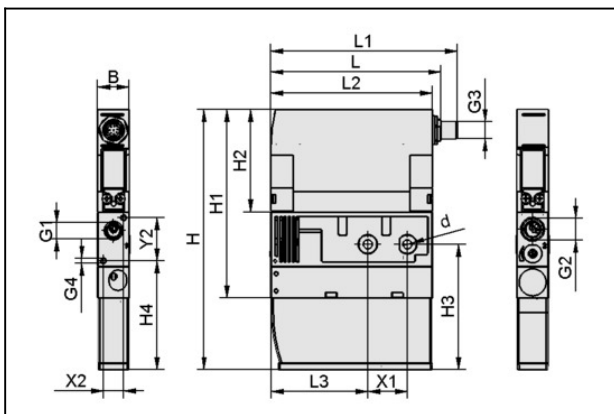
Homepage > Vacuum Technology for Automation > Vacuum Components > Vacuum Generators > Compact ejectors > Compact Ejectors SCPi / SMPi > SMPi 15 IMP RD M12-5

### Compact ejector "MEGA PUMP" with power blow-off function



Nozzle size: 1,5 mm  
 Suction rate (max): 75 l/min  
 Air consumption (during evac.):  
 115 l/min  
 Noise level (free): 75 dB  
 at operating press.: 4.0 ... 7.0 bar  
 Vacuum (max): -850 mbar  
 Control: Double pilot valve  
 with: digital air-saving function  
 Electrical connection:  
 Male connect M12, 5 pol  
 Protection: IP 65

### Design Data



Attribute	Value
B	22 mm
d	6.6 mm
G1	G1/4"-IG
G2	G3/8"-F
G3	M12x1-M
G4	M4-F
H	181.5 mm
H1	131.5 mm
H2	71.5 mm
H3	87.5 mm
H4	76 mm

# Compact ejector

## SMPi 15 IMP RD M12-5

Part no.:10.02.02.03341

<https://www.schmalz.com/10.02.02.03341>



Attribute	Value
L	118.5 mm
L1	129.7 mm
L2	112.5 mm
L3	67.5 mm
X1	27.5 mm
X2	14 mm
Y2	30 mm

---

### Technical Data

Attribute	Value
Degree of evacuation	85 %
Suction rate (max.)	4.5 m <sup>3</sup> /h
Suction rate (max.)	75 l/min
Air consumption suction	7.2 m <sup>3</sup> /h
Air consumption suction	115 l/min
Max. air consumption blow off	200 l/min
Sound level free	75 dB(A)
Pressure range (operating pressure)	4.0 ... 7.0 bar
Recomm. internal hose diameter compressed air	6 mm
Recomm. internal hose diameter vacuum	6 mm
Control valve	Impulsventil
Nozzle diameter	1.5 mm
Weight	0.56 kg
Operating temperature	0 ... 50 °C
Pressure range (operating pressure)	58.0...101.5

# Compact ejector

## SMPi 15 IMP RD M12-5

Part no.:10.02.02.03341

<https://www.schmalz.com/10.02.02.03341>



Attribute	Value
Suction rate (max.)	2.648 cfm
Air consumption suction	4.061 cfm
Max. vacuum	-25.1 inHg

Note: The supply voltage for vacuum switches and solenoid valves is 24V DC Air consumption: At optimal operating pressure Hose diameter: For max. length 2 m

### Spare Parts



#### SD 111x21x45 SMPi/SCPi

Part no.10.02.02.03381

Silencer for vacuum generators

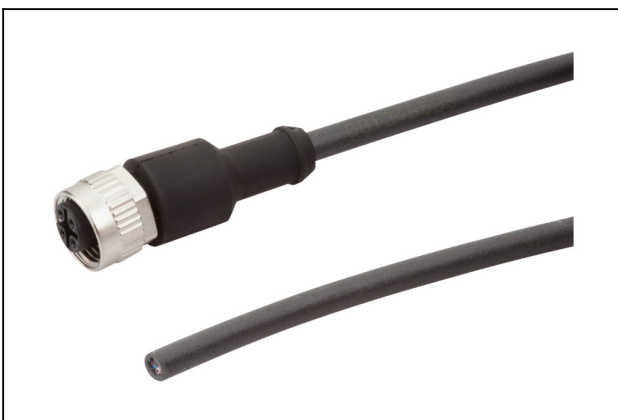
Length L: 111 mm

Width B: 21 mm

Height H: 45 mm

for: Compact ejectors SMPi/SCPi

### Accessories



#### ASK B-M12-5 5000 K-5P

Part no.21.04.05.00080

Connection cable

Interface Connection 1:

Fem connect M12, 5 pol

Cable length: 5000 mm

Interface Connection 2: Cable 5

Material: PUR-Cable

Shape: Straight

## Compact ejector

### SMPi 15 IMP RD M12-5

Part no.:10.02.02.03341

<https://www.schmalz.com/10.02.02.03341>



#### ASV SMPI/SCPI 3xS-M12-4

Part no.10.02.02.03372

Connection distributor

for: Ejector SMPI/SCPI

Interface Connection cable:

Fem connect M12, 5 pol

Interface Connection cable:

3xConnect M12, 4 pol

Length L: 1075 mm



#### ASV SMPI/SCPI 2xS-M12-4

Part no.10.02.02.03490

Connection distributor

for: Ejector SMPI/SCPI

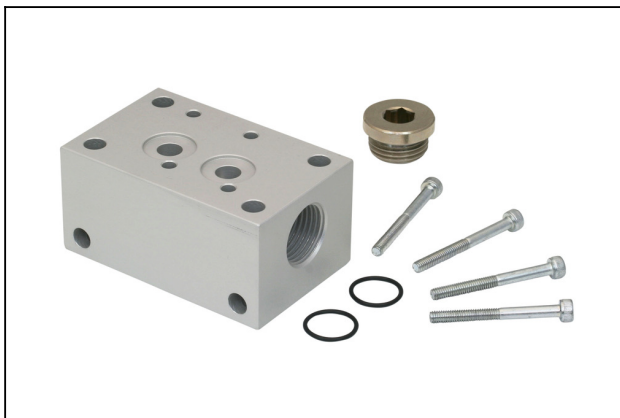
Interface Connection cable:

Fem connect M12, 5 pol

Interface Connection cable:

2xConnect M12, 4 pol

Length L: 1050 mm



#### GP 2 SMP 15..30/SCP 20..30

Part no.10.02.02.00917

Compressed air distributor for use as a manifold and for building ejector blocks

Number of connections: 2

Length L: 78 mm

Width B: 38 mm

Height H: 49.5 mm

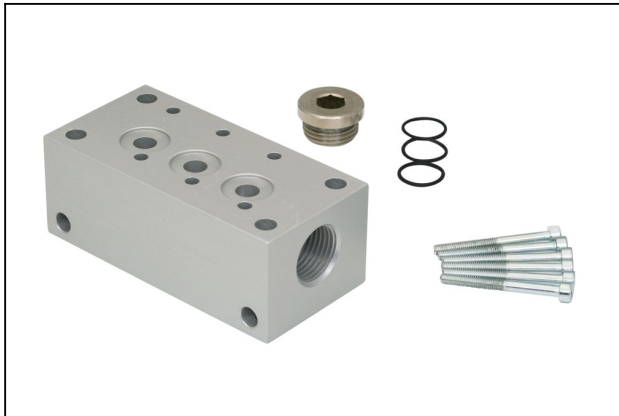
for: SMP 15..30/SCP 20..30

## Compact ejector

### SMPi 15 IMP RD M12-5

Part no.:10.02.02.03341

<https://www.schmalz.com/10.02.02.03341>



#### GP 3 SMP 15..25/SCP 20..25

Part no.10.02.02.00918

Compressed air distributor for use as a manifold and for building ejector blocks

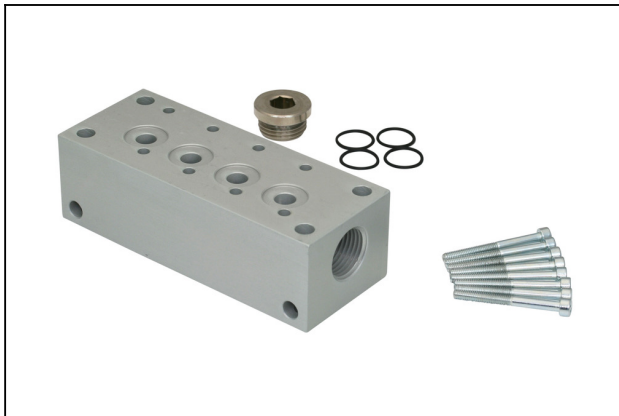
Number of connections: 3

Length L: 101 mm

Width B: 38 mm

Height H: 49.5 mm

for: SMP 15..25/SCP 20..25



#### GP 4 SMP 15..20/SCP 20

Part no.10.02.02.00919

Compressed air distributor for use as a manifold and for building ejector blocks

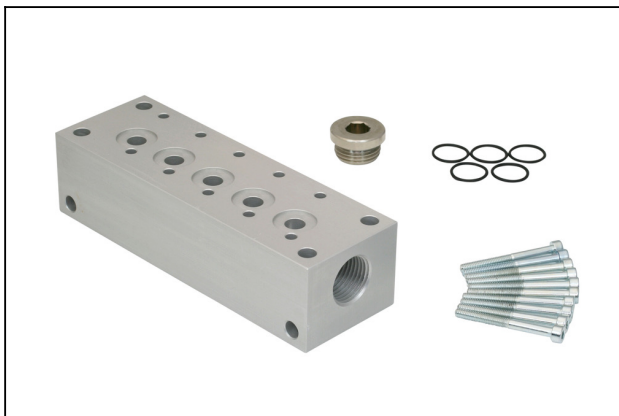
Number of connections: 4

Length L: 124 mm

Width B: 38 mm

Height H: 49.5 mm

for: SMP 15..20/SCP 20



#### GP 5 SMP 15

Part no.10.02.02.00920

Compressed air distributor for use as a manifold and for building ejector blocks

Number of connections: 5

Length L: 147 mm

Width B: 38 mm

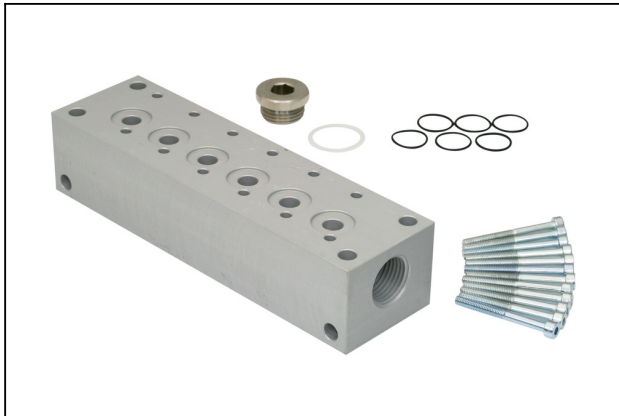
Height H: 49.5 mm

for: SMP 15

## Compact ejector SMPi 15 IMP RD M12-5

Part no.:10.02.02.03341

<https://www.schmalz.com/10.02.02.03341>



### GP 6 SMP 15

Part no.10.02.02.00921

Compressed air distributor for use as a manifold and for building ejector blocks

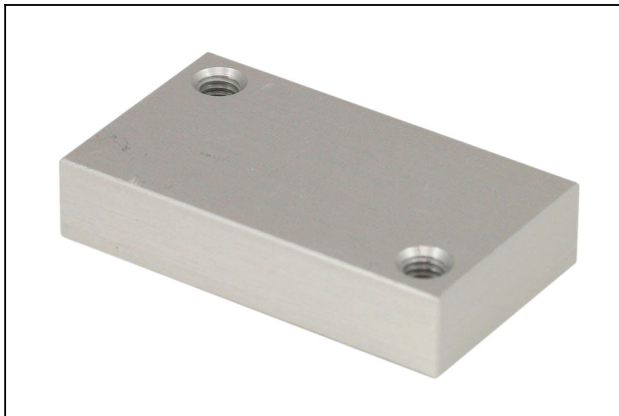
Number of connections: 6

Length L: 170 mm

Width B: 38 mm

Height H: 49.5 mm

for: SMP 15



### EJEK-PL SMP(i)15..30/SCP(i)20..30

Part no.10.02.02.00728

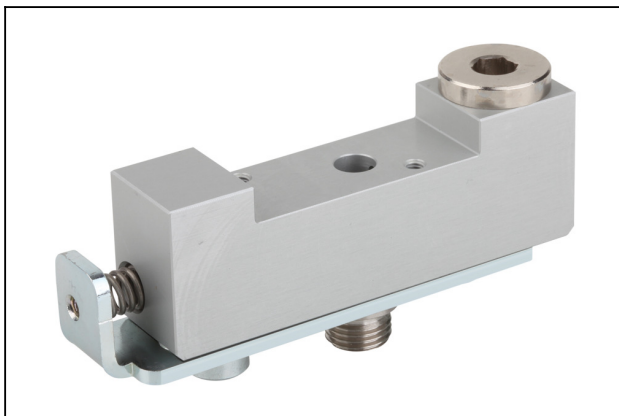
Ejector blanking plate

Length L: 38 mm

Width B: 22 mm

Height H: 8 mm

for: SMP(i) 15..30/SCP(i) 20..30



### ADP-Q 90.5x22x29.7 SMPi/SCPi

Part no.10.02.02.03463

Baseplate for the construction of ejector blocks

Length L: 90.5 mm

Width B: 22 mm

Height H: 29.7 mm

Number of connections: 1

for: Compact ejectors SMPi/SCPi

## Compact ejector SMPi 15 IMP RD M12-5

Part no.:10.02.02.03341

<https://www.schmalz.com/10.02.02.03341>



### EJEK-TEST SMPi/SCPi

Part no.10.02.02.03588

Ejector tester

for: Compact ejectors SMPi/SCPi



### VFT G1/4-IG 80

Part no.10.07.01.00119

Vacuum cup filter with transparent housing and replaceable filter

Connection: G1/4"-F

Shape: Short filter insert

Nominal flow rate: 6.6 m<sup>3</sup>/h

Filter pore size: 80 μm

## X-ON Electronics

Largest Supplier of Electrical and Electronic Components

*Click to view similar products for [Bench Top Tools](#) category:*

*Click to view products by [SCHMALZ](#) manufacturer:*

Other Similar products are found below :

[0027](#) [6104-201-2102](#) [6104-201-2502](#) [6-1372442-6](#) [62500-1584](#) [63801-7252](#) [63801-7269](#) [69002-5525](#) [691667-1](#) [768539-1](#) [854130-1](#)  
[854946-2](#) [856203-1](#) [904449-1](#) [9-22280-9](#) [986096-2](#) [992438-3](#) [1-21000-3](#) [1-21000-4](#) [1-21000-1](#) [1-25022-4](#) [1302263353](#) [1424264-1](#)  
[1424267-1](#) [1428211-1](#) [1-455755-6](#) [1752324-1](#) [1752744-1](#) [18023-9](#) [189763-1](#) [1901726-1](#) [1954222-1](#) [2079747-1](#) [21001-2](#) [2119083-1](#)  
[2119085-1](#) [2119371-1](#) [2161362-2](#) [2161930-1](#) [2217088-2](#) [2217339-1](#) [2217347-1](#) [22281-9](#) [22374-7](#) [240825-4](#) [992342-2](#) [2030790-2](#) [2063796-1](#) [2063799-2](#) [2119092-1](#)