

Compact ejector SMPi 15 IMP VD M12-5

Part no.:10.02.02.03338

<https://www.schmalz.com/10.02.02.03338>

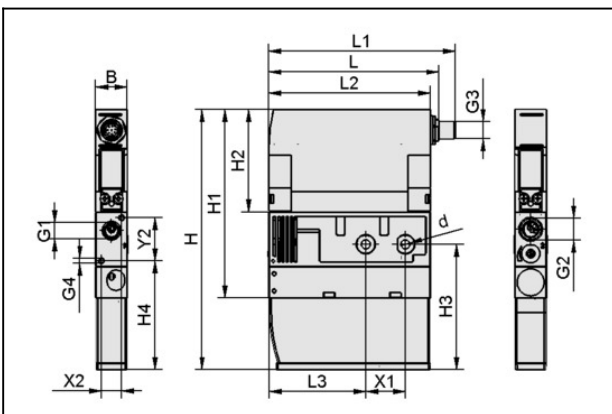
Homepage > Vacuum Technology for Automation > Vacuum Components > Vacuum Generators > Compact ejectors > Compact Ejectors SCPi / SMPi > SMPi 15 IMP VD M12-5

Compact ejector "MEGA PUMP" with power blow-off function



Nozzle size: 1,5 mm
 Suction rate (max): 75 l/min
 Air consumption (during evac.):
 115 l/min
 Noise level (free): 75 dB
 at operating press.: 4.0 ... 7.0 bar
 Vacuum (max): -850 mbar
 Control: Double pilot valve
 with: digital vacuum switch
 Electrical connection:
 Male connect M12, 5 pol
 Protection: IP 65

Design Data



| Attribute | Value |
|-----------|----------|
| B | 22 mm |
| d | 6.6 mm |
| G1 | G1/4"-IG |
| G2 | G3/8"-F |
| G3 | M12x1-M |
| G4 | M4-F |
| H | 181.5 mm |
| H1 | 131.5 mm |
| H2 | 71.5 mm |
| H3 | 87.5 mm |
| H4 | 76 mm |

Compact ejector

SMPi 15 IMP VD M12-5

Part no.:10.02.02.03338

<https://www.schmalz.com/10.02.02.03338>



| Attribute | Value |
|-----------|----------|
| L | 118.5 mm |
| L1 | 129.7 mm |
| L2 | 112.5 mm |
| L3 | 67.5 mm |
| X1 | 27.5 mm |
| X2 | 14 mm |
| Y2 | 30 mm |

Technical Data

| Attribute | Value |
|---|-----------------------|
| Degree of evacuation | 85 % |
| Suction rate (max.) | 4.5 m ³ /h |
| Suction rate (max.) | 75 l/min |
| Air consumption suction | 7.2 m ³ /h |
| Air consumption suction | 115 l/min |
| Max. air consumption blow off | 200 l/min |
| Sound level free | 75 dB(A) |
| Pressure range (operating pressure) | 4.0 ... 7.0 bar |
| Recomm. internal hose diameter compressed air | 6 mm |
| Recomm. internal hose diameter vacuum | 6 mm |
| Control valve | Impulsventil |
| Nozzle diameter | 1.5 mm |
| Weight | 0.56 kg |
| Operating temperature | 0 ... 50 °C |
| Pressure range (operating pressure) | 58.0...101.5 |

Compact ejector

SMPi 15 IMP VD M12-5

Part no.:10.02.02.03338

<https://www.schmalz.com/10.02.02.03338>



| Attribute | Value |
|-------------------------|------------|
| Suction rate (max.) | 2.648 cfm |
| Air consumption suction | 4.061 cfm |
| Max. vacuum | -25.1 inHg |

Note: The supply voltage for vacuum switches and solenoid valves is 24V DC Air consumption: At optimal operating pressure Hose diameter: For max. length 2 m

Spare Parts



SD 111x21x45 SMPi/SCPi

Part no.10.02.02.03381

Silencer for vacuum generators

Length L: 111 mm

Width B: 21 mm

Height H: 45 mm

for: Compact ejectors SMPi/SCPi

Accessories



ASK B-M12-5 5000 K-5P

Part no.21.04.05.00080

Connection cable

Interface Connection 1:

Fem connect M12, 5 pol

Cable length: 5000 mm

Interface Connection 2: Cable 5

Material: PUR-Cable

Shape: Straight

Compact ejector

SMPi 15 IMP VD M12-5

Part no.:10.02.02.03338

<https://www.schmalz.com/10.02.02.03338>



ASV SMPI/SCPI 3xS-M12-4

Part no.10.02.02.03372

Connection distributor

for: Ejector SMPI/SCPI

Interface Connection cable:

Fem connect M12, 5 pol

Interface Connection cable:

3xConnect M12, 4 pol

Length L: 1075 mm



ASV SMPI/SCPI 2xS-M12-4

Part no.10.02.02.03490

Connection distributor

for: Ejector SMPI/SCPI

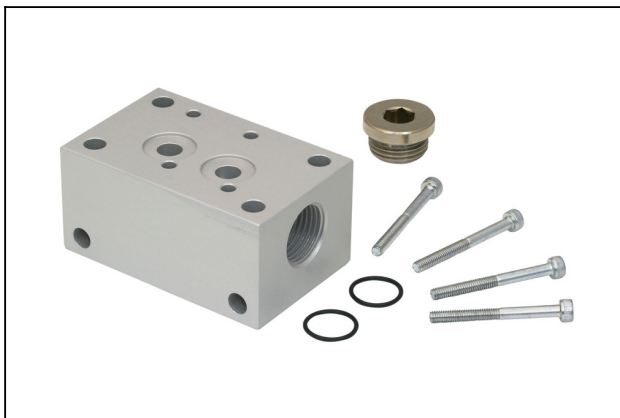
Interface Connection cable:

Fem connect M12, 5 pol

Interface Connection cable:

2xConnect M12, 4 pol

Length L: 1050 mm



GP 2 SMP 15..30/SCP 20..30

Part no.10.02.02.00917

Compressed air distributor for use as a manifold and for building ejector blocks

Number of connections: 2

Length L: 78 mm

Width B: 38 mm

Height H: 49.5 mm

for: SMP 15..30/SCP 20..30

Compact ejector

SMPi 15 IMP VD M12-5

Part no.:10.02.02.03338

<https://www.schmalz.com/10.02.02.03338>



GP 3 SMP 15..25/SCP 20..25

Part no.10.02.02.00918

Compressed air distributor for use as a manifold and for building ejector blocks

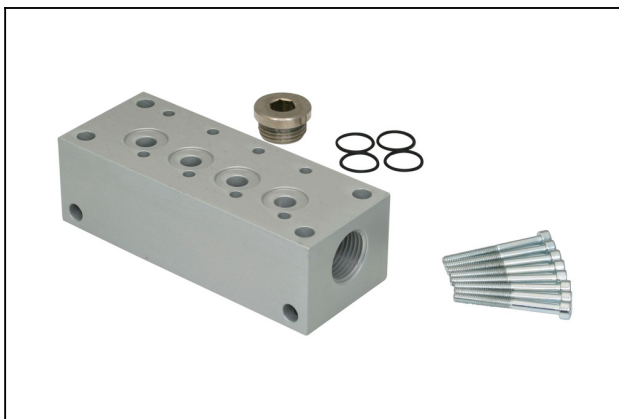
Number of connections: 3

Length L: 101 mm

Width B: 38 mm

Height H: 49.5 mm

for: SMP 15..25/SCP 20..25



GP 4 SMP 15..20/SCP 20

Part no.10.02.02.00919

Compressed air distributor for use as a manifold and for building ejector blocks

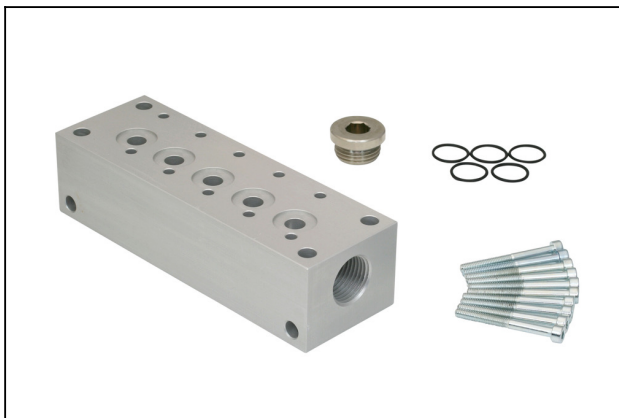
Number of connections: 4

Length L: 124 mm

Width B: 38 mm

Height H: 49.5 mm

for: SMP 15..20/SCP 20



GP 5 SMP 15

Part no.10.02.02.00920

Compressed air distributor for use as a manifold and for building ejector blocks

Number of connections: 5

Length L: 147 mm

Width B: 38 mm

Height H: 49.5 mm

for: SMP 15

Compact ejector SMPi 15 IMP VD M12-5

Part no.:10.02.02.03338

<https://www.schmalz.com/10.02.02.03338>



GP 6 SMP 15

Part no.10.02.02.00921

Compressed air distributor for use as a manifold and for building ejector blocks

Number of connections: 6

Length L: 170 mm

Width B: 38 mm

Height H: 49.5 mm

for: SMP 15



EJEK-PL SMP(i)15..30/SCP(i)20..30

Part no.10.02.02.00728

Ejector blanking plate

Length L: 38 mm

Width B: 22 mm

Height H: 8 mm

for: SMP(i) 15..30/SCP(i) 20..30



ADP-Q 90.5x22x29.7 SMPi/SCPi

Part no.10.02.02.03463

Baseplate for the construction of ejector blocks

Length L: 90.5 mm

Width B: 22 mm

Height H: 29.7 mm

Number of connections: 1

for: Compact ejectors SMPi/SCPi

Compact ejector SMPi 15 IMP VD M12-5

Part no.:10.02.02.03338

<https://www.schmalz.com/10.02.02.03338>



EJEK-TEST SMPi/SCPi

Part no.10.02.02.03588

Ejector tester

for: Compact ejectors SMPi/SCPi



VFT G1/4-IG 80

Part no.10.07.01.00119

Vacuum cup filter with transparent housing and replaceable filter

Connection: G1/4"-F

Shape: Short filter insert

Nominal flow rate: 6.6 m³/h

Filter pore size: 80 μm

X-ON Electronics

Largest Supplier of Electrical and Electronic Components

Click to view similar products for [Bench Top Tools](#) category:

Click to view products by [SCHMALZ](#) manufacturer:

Other Similar products are found below :

[0027](#) [6104-201-2102](#) [6104-201-2502](#) [6-1372442-6](#) [62500-1584](#) [63801-7252](#) [63801-7269](#) [69002-5525](#) [691667-1](#) [768539-1](#) [854130-1](#)
[854946-2](#) [856203-1](#) [904449-1](#) [9-22280-9](#) [986096-2](#) [992438-3](#) [1-21000-3](#) [1-21000-4](#) [1-21000-1](#) [1-25022-4](#) [1302263353](#) [1424264-1](#)
[1424267-1](#) [1428211-1](#) [1-455755-6](#) [1752324-1](#) [1752744-1](#) [18023-9](#) [189763-1](#) [1901726-1](#) [1954222-1](#) [2079747-1](#) [21001-2](#) [2119083-1](#)
[2119085-1](#) [2119371-1](#) [2161362-2](#) [2161930-1](#) [2217088-2](#) [2217339-1](#) [2217347-1](#) [22281-9](#) [22374-7](#) [240825-4](#) [992342-2](#) [2030790-2](#) [2063796-1](#) [2063799-2](#) [2119092-1](#)