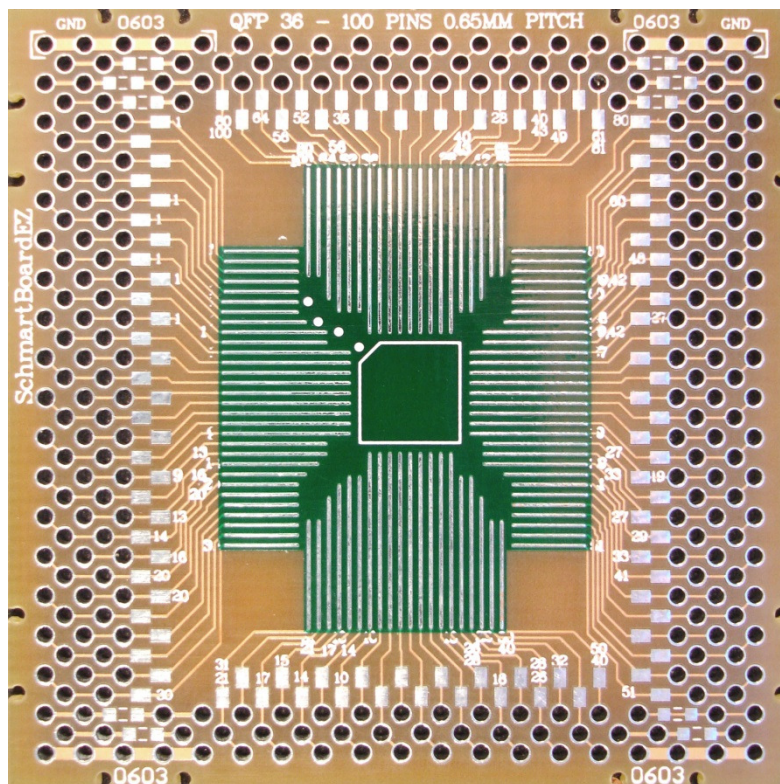
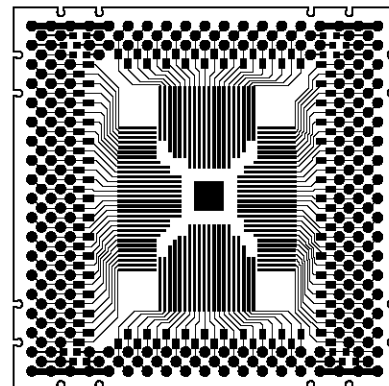


202-0010-02 0.65mm Pitch for QFP, 36-100 Pins With Schmartboard|ez™ Technology



Actual Size



Support up to 100 pins QFP, TQFP, PQFP package IC with .65mm Pitch; 10 pcs. of 0603 package, and some thru hole passive components. 9 ground holes are connected a copper plane on the bottom side. A hole in the center gives access to a ground or thermal pad on IC.

This 2" x 2" Schmartboard utilizes "Schmartboard|ez". Only Schmartboard has this patented technology to assure fast, easy and flawless hand soldering of surface mount components!

Related Part Numbers:

912-0010-02: 10 Pack of 202-0010-02 Schmartboards

Schmartboard|ez Surface Mount Family



Schmartboard, Inc.
37423 Fremont Blvd.
Fremont, CA 94536

510-744-9900(P)
510-744-9909(F)
<http://www.schmartboard.com>
<http://www.facebook.com/Schmartboard>
<http://www.twitter.com/Schmartboard>

X-ON Electronics

Largest Supplier of Electrical and Electronic Components

Click to view similar products for PCBs & Breadboards category:

Click to view products by SchmartBoard manufacturer:

Other Similar products are found below :

[8004](#) [8007](#) [8016](#) [8017](#) [8028](#) [8029](#) [1268-12](#) [1268-10](#) [1320833-1](#) [923252-R](#) [3410](#) [3396](#) [15107](#) [15101](#) [8006](#) [8015](#) [8018](#) [8019](#) [8020](#) [1268-19](#)
[1268-20](#) [8026](#) [1239-19](#) [SBBTH1520-1](#) [SBBTH1506-1](#) [SBBTH4080-1](#) [SBBTH3030-1](#) [SBBTH1512-1](#) [SBBTH1508-1](#) [SBBSM2120-1](#)
[SBB2808-1](#) [SBB2805-1](#) [SBB1605-1](#) [SBB1602-1](#) [SBB1005-1](#) [SBB1002-1](#) [3426](#) [32P15WE](#) [ZAS1X206203XRPU160](#) [SBBTH3040-1](#)
[SBB0004-1](#) [SBB830-QTY10](#) [7115](#) [923749-I](#) [RE013-LF](#) [RE014-LF](#) [RE015-LF](#) [RE1210-LF](#) [RE200-C3](#) [RE210-S1](#)