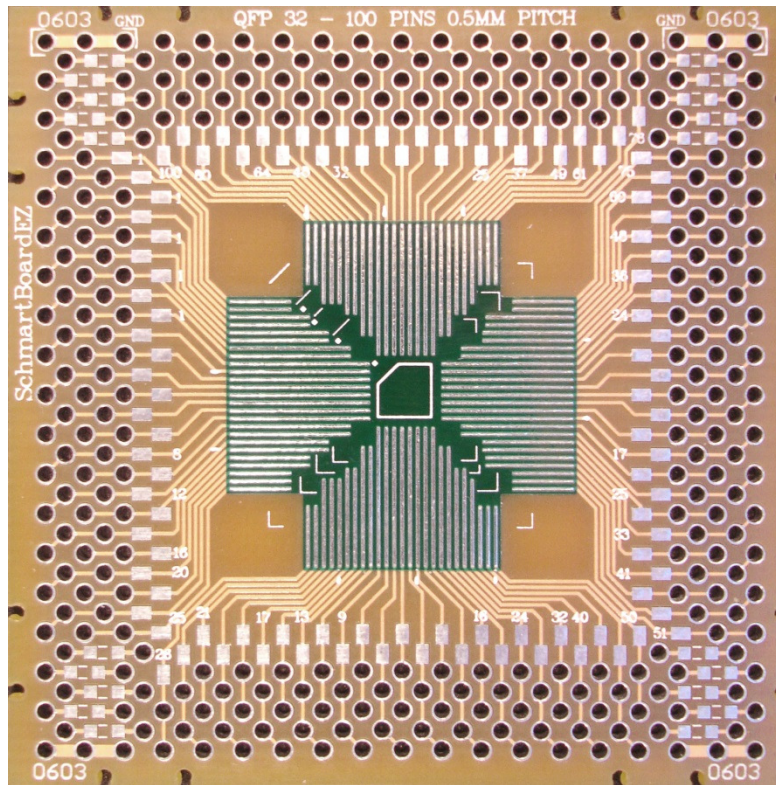
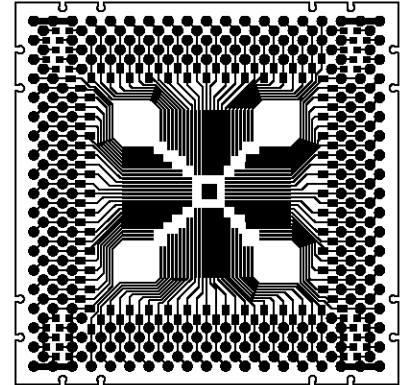


# 202-0011-01 0.5mm Pitch for QFP, 32-100 Pins With Schmartboard|ez™ Technology



Actual Size



Support up to 100 pins QFP, TQFP, PQFP package IC with .5mm Pitch; 20 pcs. of 0603 package, and some thru hole passive components. 6 ground holes are connected a copper plane on the bottom side. A hole in the center gives access to a ground or thermal pad on IC.

This 2" x 2" Schmartboard utilizes "Schmartboard|ez". Only Schmartboard has this patented technology to assure fast, easy and flawless hand soldering of surface mount components!

## Related Part Numbers:

912-0011-01: 10 Pack of 202-0011-01 Schmartboards

# Schmartboard|ez Surface Mount Family



Schmartboard, Inc.  
37423 Fremont Blvd.  
Fremont, CA 94536

510-744-9900(P)  
510-744-9909(F)  
<http://www.schmartboard.com>  
<http://www.facebook.com/Schmartboard>  
<http://www.twitter.com/Schmartboard>

## X-ON Electronics

Largest Supplier of Electrical and Electronic Components

*Click to view similar products for [PCBs & Breadboards](#) category:*

*Click to view products by [SchmartBoard](#) manufacturer:*

Other Similar products are found below :

[8004](#) [8007](#) [8016](#) [8017](#) [8028](#) [8029](#) [1268-12](#) [1268-10](#) [1320833-1](#) [923252-R](#) [3410](#) [3396](#) [15107](#) [15101](#) [8006](#) [8015](#) [8018](#) [8019](#) [8020](#) [1268-19](#)  
[1268-20](#) [8026](#) [1239-19](#) [SBBTH1520-1](#) [SBBTH1506-1](#) [SBBTH4080-1](#) [SBBTH3030-1](#) [SBBTH1512-1](#) [SBBTH1508-1](#) [SBB2808-1](#)  
[SBB2805-1](#) [SBB1605-1](#) [SBB1602-1](#) [SBB1005-1](#) [SBB1002-1](#) [3426](#) [32P15WE](#) [ZAS1X206203XRPU160](#) [SBBTH3040-1](#) [SBB0004-1](#)  
[SBB830-QTY10](#) [7115](#) [923749-I](#) [RE013-LF](#) [RE014-LF](#) [RE015-LF](#) [RE1210-LF](#) [RE200-C3](#) [RE210-S1](#) [RE317-HP](#)