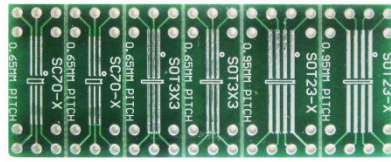
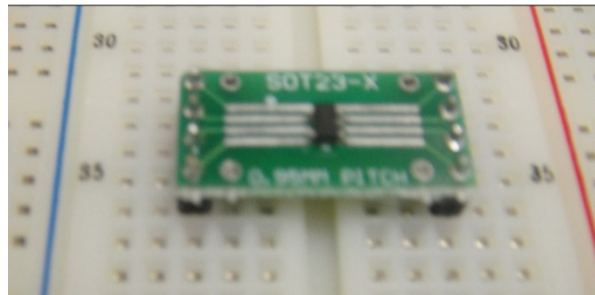
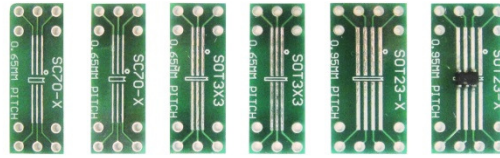
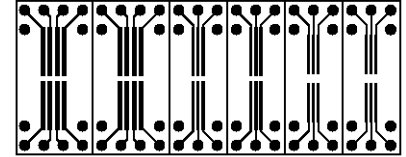


204-0003-01 SC70 & SOT 23 to DIP Adapter With Schmartboard | ez™ Technology



Actual Size



This product is an SOIC to DIP adapter with a twist. These have our patented "ez" technology which means that soldering the surface mount component is simple, and as with all of our "ez" boards, we are the only company with a patented solution for easily soldering surface mount parts. This board is really six boards on one. It contains quantity 2 boards for SOT 23(up to 8 legs), with a .95mm pitch, quantity 2 boards for SOT 323, 353, 363 parts with a .65mm pitch and quantity 2 boards for SC70(up to 6 legs) with a .65 mm pitch. A standard row of 40 headers has been included as a bonus for your convenience.

Related Part Numbers:

204-0003-31: Two 204-0003-01 Schmartboards with a Free 830 Test Points Breadboard

914-0003-01: 10 Pack of 204-0003-01 Schmartboards

Schmartboardlez SMT to DIP Family



Schmartboard, Inc.
37423 Fremont Blvd.
Fremont, CA 94536

510-744-9900(P)
510-744-9909(F)
<http://www.schmartboard.com>
<http://www.facebook.com/Schmartboard>
<http://www.twitter.com/Schmartboard>

X-ON Electronics

Largest Supplier of Electrical and Electronic Components

Click to view similar products for [PCBs & Breadboards category](#):

Click to view products by [SchmartBoard manufacturer](#):

Other Similar products are found below :

[8004](#) [8007](#) [8016](#) [8017](#) [8028](#) [8029](#) [1268-12](#) [1268-10](#) [1320833-1](#) [923252-R](#) [3410](#) [3396](#) [15107](#) [15101](#) [8006](#) [8015](#) [8018](#) [8019](#) [8020](#) [1268-19](#)
[1268-20](#) [8026](#) [1239-19](#) [SBBTH1506-1](#) [SBBTH4080-1](#) [SBBTH3030-1](#) [SBBTH1512-1](#) [SBBTH1508-1](#) [SBBSM2120-1](#) [SBB2808-1](#)
[SBB2805-1](#) [SBB1605-1](#) [SBB1602-1](#) [SBB1005-1](#) [SBB1002-1](#) [3426](#) [32P15WE](#) [ZAS1X206203XRPU160](#) [SBBTH3040-1](#) [SBB0004-1](#)
[SBB830-QTY10](#) [7115](#) [923749-I](#) [RE013-LF](#) [RE014-LF](#) [RE015-LF](#) [RE1210-LF](#) [RE200-C3](#) [RE210-S1](#) [RE317-HP](#)