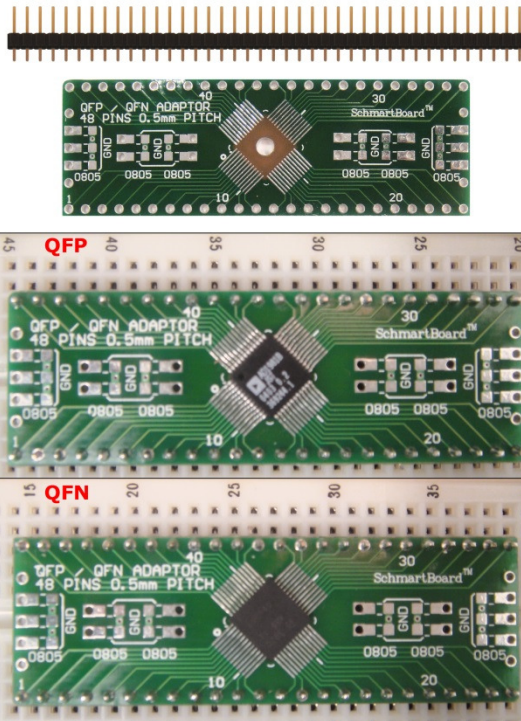
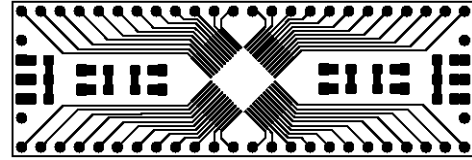


204-0014-01 0.5 Pitch 48 Pin QFP/QFN to DIP Adapter With Schmartboard | ez™ Technology



Actual Size

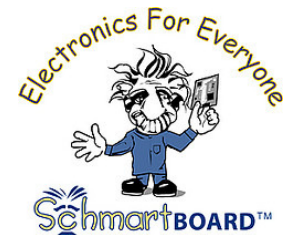


This product is a QFP and QFN to DIP adapter with a twist. These have our patented "ez" technology which means that soldering the surface mount component is simple, and as with all of our "ez" boards, we are the only company with a patented solution for easily soldering surface mount parts. This board supports .5mm pitch, 48 pin devices in both QFP and QFN packages. This board also includes room for 0805 SMT discrete components such as a bypass capacitor and pads for easy access to a ground. Additionally a large plated hole in the center of the device area, allows for the addition of solder to utilize ground pads on the bottom of the device. Standard headers have been included as a bonus for your convenience.

Related Part Numbers:

- 204-0014-31: Two 204-0014-01 Schmartboards with a Free 830 Test Points Breadboard
- 914-0014-01: 10 Pack of 204-0014-01 Schmartboards

Schmartboardlez SMT to DIP Family



Schmartboard, Inc.
37423 Fremont Blvd.
Fremont, CA 94536

510-744-9900(P)
510-744-9909(F)
<http://www.schmartboard.com>
<http://www.facebook.com/Schmartboard>
<http://www.twitter.com/Schmartboard>

X-ON Electronics

Largest Supplier of Electrical and Electronic Components

Click to view similar products for PCBs & Breadboards category:

Click to view products by SchmartBoard manufacturer:

Other Similar products are found below :

[8004](#) [8007](#) [8016](#) [8017](#) [8028](#) [8029](#) [1268-12](#) [1268-10](#) [1320833-1](#) [923252-R](#) [3410](#) [3396](#) [15107](#) [15101](#) [8006](#) [8015](#) [8018](#) [8019](#) [8020](#) [1268-19](#)
[1268-20](#) [8026](#) [1239-19](#) [SBBTH1520-1](#) [SBBTH1506-1](#) [SBBTH4080-1](#) [SBBTH3030-1](#) [SBBTH1512-1](#) [SBBTH1508-1](#) [SBBSM2120-1](#)
[SBB2808-1](#) [SBB2805-1](#) [SBB1605-1](#) [SBB1602-1](#) [SBB1005-1](#) [SBB1002-1](#) [3426](#) [32P15WE](#) [ZAS1X206203XRPU160](#) [SBBTH3040-1](#)
[SBB0004-1](#) [SBB830-QTY10](#) [7115](#) [923749-I](#) [RE013-LF](#) [RE014-LF](#) [RE015-LF](#) [RE1210-LF](#) [RE200-C3](#) [RE210-S1](#)