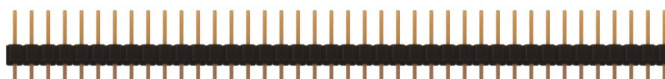
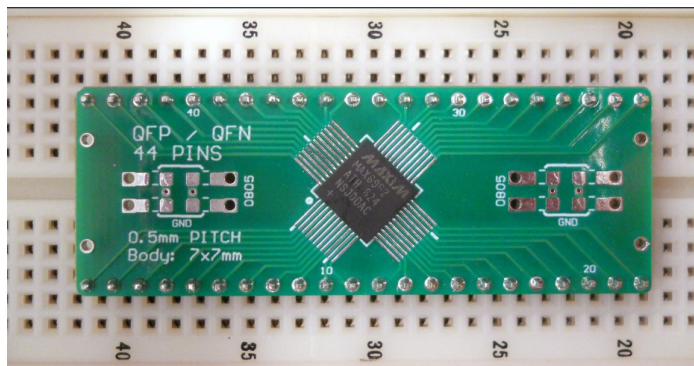
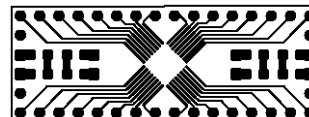
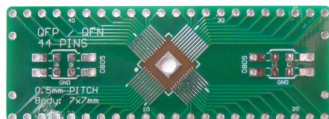


# 204-0045-01 0.5 Pitch 44 Pin QFP/QFN to DIP Adapter With Schmartboard|ez™ Technology



Actual Size



This product is an QFP/QFN to DIP adapter with a twist. These have our patented "ez" technology which means that soldering the surface mount component is simple, and as with all of our "ez" boards, we are the only company with a patented solution for easily soldering surface mount parts. Included in the package is 0.5mm pitch adapter board for 44 Lead QFP or QFN and a row of headers to use the boards with a breadboard. This board also includes room for 0805 SMT discrete components such as a bypass capacitor and pads for easy access to a ground. Additionally a plated hole in the center of the device area, allows for the addition of solder to utilize ground pads on the bottom of the IC. A standard row of 40 headers has been included as a bonus for your convenience.

#### Related Part Numbers:

204-0045-31: Two 204-0045-01 Schmartboards with a Free 830 Test Points Breadboard

914-0045-01: 10 Pack of 204-0045-01 Schmartboards

## Schmartboard|ez SMT to DIP Family



Schmartboard, Inc.  
37423 Fremont Blvd.  
Fremont, CA 94536

510-744-9900(P)  
510-744-9909(F)  
<http://www.schmartboard.com>  
<http://www.facebook.com/Schmartboard>  
<http://www.twitter.com/Schmartboard>

## **X-ON Electronics**

Largest Supplier of Electrical and Electronic Components

*Click to view similar products for [PCBs & Breadboards category](#):*

*Click to view products by [SchmartBoard manufacturer](#):*

Other Similar products are found below :

[8004](#) [8007](#) [8016](#) [8017](#) [8028](#) [8029](#) [1268-12](#) [1268-10](#) [1320833-1](#) [923252-R](#) [3410](#) [3396](#) [15107](#) [8006](#) [8015](#) [8018](#) [8019](#) [8020](#) [1268-19](#) [1268-20](#) [8026](#) [1239-19](#) [SBBTH1520-1](#) [SBBTH1506-1](#) [SBBTH4080-1](#) [SBBTH3030-1](#) [SBBTH1512-1](#) [SBBTH1508-1](#) [SBBSM2120-1](#) [SBB2808-1](#) [SBB2805-1](#) [SBB1605-1](#) [SBB1602-1](#) [SBB1005-1](#) [SBB1002-1](#) [3426](#) [32P15WE](#) [ZAS1X206203XRPU160](#) [SBBTH3040-1](#) [SBB0004-1](#) [SBB830-QTY10](#) [7115](#) [923749-I](#) [RE013-LF](#) [RE014-LF](#) [RE015-LF](#) [RE1210-LF](#) [RE200-C3](#) [RE210-S1](#) [RE317-HP](#)