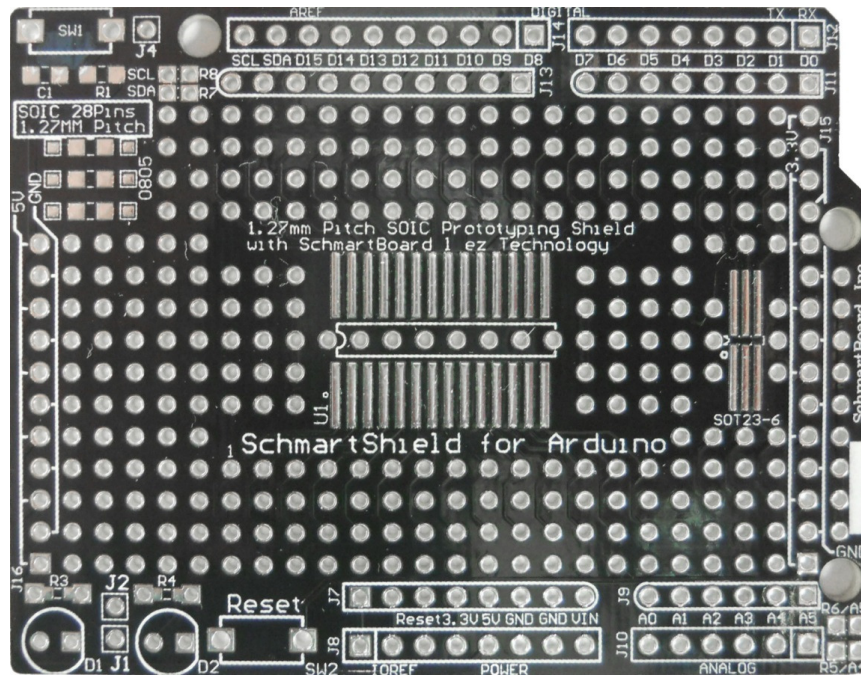


206-0004-01 - Schmartboard | ez 1.27mm Pitch SOIC Surface Mount Prototyping shield for Arduino Uno (Bareboard)

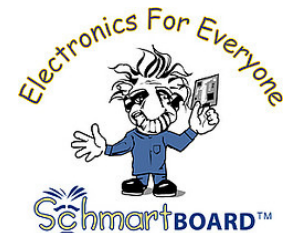


SchmartBoard | ez 1.27mm Pitch SOIC Surface Mount Prototyping shield for Arduino Uno (Bareboard)

Schmartboard has made surface mount components available to Arduino users. These boards utilize our "EZ" soldering technology to assure fast, easy and flawless soldering.

- 1.27mm pitch SOIC footprint for prototyping
- SOT23-6 footprint for prototyping
- Onboard reset button for the Arduino IC
- Additional Push-Button switch circuit
- 5V/GND rail for easy connection
- 3.3V/GND rail for easy connection
- 2 General purpose LEDs
- Optional Pull-up resistors footprints (Through-Hole or SMD) for I2C
- Spare 0805 footprint x3
- Surface Mount bypass footprints available on the bottom side

Schmartboard Arduino Family



Schmartboard, Inc.
37423 Fremont Blvd.
Fremont, CA 94536

510-744-9900(P)
510-744-9909(F)
<http://www.schmartboard.com>
<http://www.facebook.com/Schmartboard>
<http://www.twitter.com/Schmartboard>

X-ON Electronics

Largest Supplier of Electrical and Electronic Components

Click to view similar products for [PCBs & Breadboards](#) category:

Click to view products by [SchmartBoard](#) manufacturer:

Other Similar products are found below :

[8004](#) [8007](#) [8016](#) [8017](#) [8028](#) [8029](#) [1268-12](#) [1268-10](#) [1320833-1](#) [923252-R](#) [3410](#) [3396](#) [15107](#) [8006](#) [8015](#) [8018](#) [8019](#) [8020](#) [1268-19](#) [1268-20](#) [8026](#) [1239-19](#) [SBBTH1520-1](#) [SBBTH1506-1](#) [SBBTH4080-1](#) [SBBTH3030-1](#) [SBBTH1512-1](#) [SBBTH1508-1](#) [SBBSM2120-1](#) [SBB2808-1](#) [SBB2805-1](#) [SBB1605-1](#) [SBB1602-1](#) [SBB1005-1](#) [SBB1002-1](#) [3426](#) [32P15WE](#) [ZAS1X206203XRPU160](#) [SBBTH3040-1](#) [SBB0004-1](#) [SBB830-QTY10](#) [7115](#) [923749-I](#) [RE013-LF](#) [RE014-LF](#) [RE015-LF](#) [RE1210-LF](#) [RE200-C3](#) [RE210-S1](#) [RE317-HP](#)