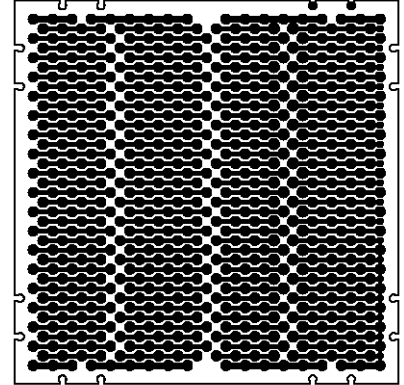


201-0001-01

## 2" x 2" Through Hole Board 0.1" Spacing With Schmartboard's Signature 0.05" Offset Grid



Actual Size



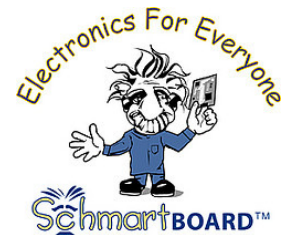
Through Hole 0.1" Spacing With Schmartboard's Signature 0.05" Offset Grid, 2" X 2"

100% support of the through hole components with the 0.1" spacing pitch. 12 ground holes are connected a copper plane on the bottom side. Components such as capacitor, resistor, diode, inductor, crystal, headers, jumpers, fuse, transistors, voltage regulators, DIP IC 70 pins or sockets, DIP switches, relay, RJ11, RJ45 connector...etc. are supported.

Related Part Numbers:

910-0001-01: 10 Pack of 201-0001-01 Schmartboards

# Schmartboardlez Through Hole Family



Schmartboard, Inc.  
37423 Fremont Blvd.  
Fremont, CA 94536

510-744-9900(P)  
510-744-9909(F)  
<http://www.schmartboard.com>  
<http://www.facebook.com/Schmartboard>  
<http://www.twitter.com/Schmartboard>

## X-ON Electronics

Largest Supplier of Electrical and Electronic Components

*Click to view similar products for PCBs & Breadboards category:*

*Click to view products by SchmartBoard manufacturer:*

Other Similar products are found below :

[8004](#) [8007](#) [8016](#) [8017](#) [8028](#) [8029](#) [1268-12](#) [1268-10](#) [1320833-1](#) [923252-R](#) [3410](#) [3396](#) [15107](#) [15101](#) [8006](#) [8015](#) [8018](#) [8019](#) [8020](#) [1268-19](#)  
[1268-20](#) [8026](#) [1239-19](#) [SBBTH1520-1](#) [SBBTH1506-1](#) [SBBTH4080-1](#) [SBBTH3030-1](#) [SBBTH1512-1](#) [SBBTH1508-1](#) [SBBSM2120-1](#)  
[SBB2808-1](#) [SBB2805-1](#) [SBB1605-1](#) [SBB1602-1](#) [SBB1005-1](#) [SBB1002-1](#) [3426](#) [32P15WE](#) [ZAS1X206203XRPU160](#) [SBBTH3040-1](#)  
[SBB0004-1](#) [SBB830-QTY10](#) [7115](#) [923749-I](#) [RE013-LF](#) [RE014-LF](#) [RE015-LF](#) [RE1210-LF](#) [RE200-C3](#) [RE210-S1](#)