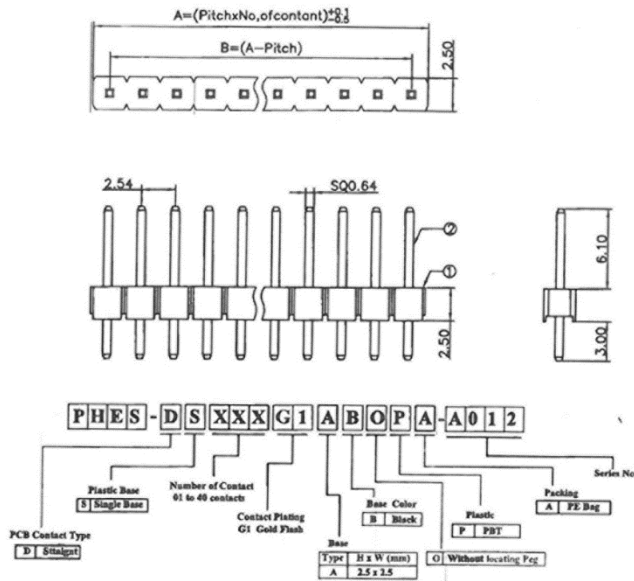
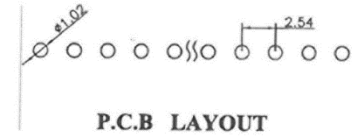


920-0012-01 - Qty. Ten 0.1" Spacing 40-Dual Row Headers



LTR	Part Name	Material	Description
1	Housing	PBT UL94V-0	200° C for 20 Seconds . Initial : 1000M Ohms Min. After Test : 500M Ohms Min.
2	Contact	Brass C2600	Current Rating : 3.0A Initial : 20m Ohms Max. After Test : 40m Ohms Max.

Normal Force : 800 Grams Average .
 Temperature Rating : -40° C ~ +125° C .
 Dielectric Withstanding Voltage : 1000V AC/Min



L=11.6 mm

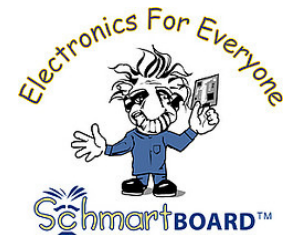
RoHS compliant



Qty. Ten 0.1" Spacing 40-Dual Row Headers

Breakable for use in whatever quantity you need from 1 to 40; 11.5mm long, .1" spacing, perfect for use with most Schmartboards and breadboards; Schmartboard headers are always immersed in gold to assure the best connection and to avoid oxidation.

Schmartboard Accessory Family



Schmartboard, Inc.
37423 Fremont Blvd.
Fremont, CA 94536

510-744-9900(P)
510-744-9909(F)
<http://www.schmartboard.com>
<http://www.facebook.com/Schmartboard>
<http://www.twitter.com/Schmartboard>

X-ON Electronics

Largest Supplier of Electrical and Electronic Components

Click to view similar products for [Headers & Wire Housings](#) category:

Click to view products by [SchmartBoard](#) manufacturer:

Other Similar products are found below :

[892-18-020-10-001101](#) [58102-G61-06LF](#) [582553-1](#) [0009485154](#) [009176003701906](#) [0050291907](#) [LY20-4P-DT1-P1E-BR](#) [02.125.8002.8](#)
[609-3404](#) [61062-3](#) [61082-181009](#) [622-3653LF](#) [63453-116](#) [636-1030](#) [636-1427](#) [636-3427](#) [636-4007](#) [641938-9](#) [641991-4](#) [644827-2](#) [65817-](#)
[010LF](#) [65817-015LF](#) [65863-015LF](#) [66207-023LF](#) [67095-007LF](#) [67601157](#) [68648-049](#) [70.362.1628.0](#) [70-4210](#) [70-4226B](#) [70-4853B](#) [707-](#)
[5020](#) [707-5028](#) [71.350.2428.0](#) [71918-208LF](#) [71961-016LF](#) [733-134](#) [733-162](#) [754199-000](#) [760-3052](#) [787-8014-00](#) [79531-3000](#) [FCN-](#)
[360C032-B](#) [FCN-367T-T012/H](#) [FCN-723D010/2](#) [80.063.4001.1](#) [800-90-001-10-001000](#) [800-90-010-10-002000](#) [801-43-002-10-013000](#)
[801-43-006-10-002000](#)