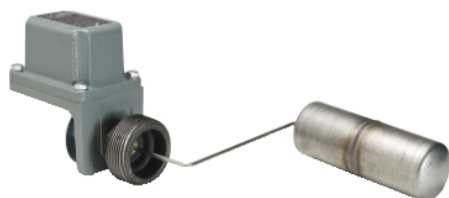


Product availability: Non-Stock - Not normally stocked in distribution facility



Main

Range of product	Square D Pumptrol
Product or component type	Float switch
Device application	Closed tank
Device short name	9037H
Product specific application	Liquid level control
Electrical circuit type	Power circuit
Quantity per set	Set of 1
Type of packing	Individual

Complementary

Product destination	For closed tank
Device mounting	Screw-in bushing
Cable entry number	2 conduit entries for 3/4"-14 NPT UL 508
Contacts type and composition	2 NC snap action DPST-DB Form YY
Controlled fluid	Fresh water @ specific gravity of 0.85 in or higher 0...220 °F Sea water @ specific gravity of 0.85 in or higher 0...220 °F Hydraulic oil @ specific gravity of 0.85 in or higher 0...220 °F Corrosive fluid @ specific gravity of 0.85 in or higher 0...220 °F
Motor power kW	1.5 kW 2 hp @ 115 V AC 1 phase 2.2 kW 3 hp @ 115 V AC 3 phases 2.2 kW 3 hp @ 230 V AC 1 phase 3.7 kW 5 hp @ 230 V AC 3 phases 0.75 kW 1 hp @ 460 V AC 3 phases 0.75 kW 1 hp @ 475 V AC 3 phases 0.18 kW 0.25 hp @ 32 V DC 0.37 kW 0.5 hp @ 115 V DC 0.37 kW 0.5 hp @ 230 V DC
Electrical connection	Screw-clamp terminals 10 AWG
Contact operation	Contacts close on liquid rise
Float movement	2...5 in adjustable
Float position	Right
Float rod angle	45°
Short-circuit protection	Cartridge fuse gG
Local signalling	With external pointer
Materials in contact with fluid	Cast iron 316 stainless steel Nitrile (Buna-N) or equivalent rubber Yellow brass 304 stainless steel
Enclosure material	Cast aluminium
Operating position	Vertical position only
Electrical durability	100 cycles @ 60 cyc/mn
Mechanical durability	300 cycles
Terminal block type	4 terminals
Operating rate	60 cyc/mn
[Ui] rated insulation voltage	575 V UL 508
Terminals description ISO n°1	Line-load-load-line

The information provided in this documentation contains general descriptions and/or technical characteristics of the performance of the products contained herein. This documentation is not intended as a substitute for and is not to be used for determining suitability or reliability of these products for specific user applications. It is the duty of any such user or integrator to perform the appropriate and complete risk analysis, evaluation and testing of the products with respect to the relevant specific application or use thereof. Neither Schneider Electric Industries SAS nor any of its affiliates or subsidiaries shall be responsible or liable for misuse of the information contained herein.

Factory modification	Without
Kit composition	Float Rod Float switch

Environment

Standards	CE UL 508
Ambient air temperature for operation	-22...220 °F
Ambient air temperature for storage	-22...220 °F
NEMA degree of protection	NEMA 7/9 UL 698
Product certifications	UL listed file E12443 CSA file LR26817

Ordering and shipping details

Category	21601 - 9037,9038 COMMERCIAL FLOAT SWITCHES
Discount Schedule	CP7G
GTIN	00785901075486
Nbr. of units in pkg.	1
Package weight(Lbs)	9.6300000000000008
Returnability	N
Country of origin	MX

Offer Sustainability

RoHS (date code: YYWW)	Will not be compliant
REACH	Reference not containing SVHC above the threshold
Product environmental profile	Available
Product end of life instructions	Available
California proposition 65	WARNING: This product can expose you to chemicals including:
----- Substance 1	Lead and lead compounds, which is known to the State of California to cause cancer and birth defects or other reproductive harm.
----- Substance 2	Di-isodecyl phthalate (DIDP) which is known to the State of California to cause birth defects or other reproductive harm.
----- More information	For more information go to www.p65warnings.ca.gov

Contractual warranty

Warranty period	18 months
-----------------	-----------

X-ON Electronics

Largest Supplier of Electrical and Electronic Components

Click to view similar products for [Schneider manufacturer](#):

Other Similar products are found below :

[ATV312H037M2](#) [LU9M1](#) [7D](#) [7S](#) [7XA1](#) [FNQR2](#) [8501RS44V24](#) [8501RSD14P14V51](#) [8501XO20V03Y414](#) [9001KR9RH13](#) [9001KXRK](#)
[9001SKR9P35RH25](#) [9001SKT35L31](#) [9003K2C003GA](#) [9007AA1](#) [9007BA1](#) [9007C54D](#) [9007C62A2](#) [9007CA11](#) [9007FA3](#) [9007HA4](#)
[9007HA6](#) [9007KA1](#) [9007KB11](#) [9007MS01S0206](#) [9012GAR4](#) [9012GAW2](#) [9012GBW1](#) [9012GDW5E3](#) [9012GFW1](#) [9012GNG1](#) [9012GNG3](#)
[9012GNG6](#) [9013FHG39J69](#) [9013FSG52J33M4](#) [9013GHG2J30](#) [9050JCK2F30V14](#) [GZ1E02](#) [ABL8MEM24003](#) [ABL8RPS24030](#)
[ATS01N206QN](#) [RSL1PRJU](#) [9001KA35](#) [9001KA3G](#) [9001KA4](#) [9001KR16H13](#) [9001KR1GH5](#) [9001KR1U](#) [9001KXSDC](#) [9007C52A2](#)