

Product availability: Stock - Normally stocked in distribution facility



Main

Range of product	TeSys GV2
Range	TeSys
Device short name	GK2AF
Product or component type	Adaptor plate
Accessory / separate part category	Mounting accessory
Product compatibility	LC1K LC1D09...D25

Complementary

Height	5.31 in (135 mm)
Width	2.13 in (54 mm)
Depth	0.94 in (24 mm)
Product weight	0.26 lb(US) (0.12 kg)

Ordering and shipping details

Category	22367 - MANUAL STR PROTECTOR - GV2
Discount Schedule	I11
GTIN	00785901223399
Nbr. of units in pkg.	1
Package weight(Lbs)	0.1499999999999999
Returnability	Y
Country of origin	FR

Offer Sustainability

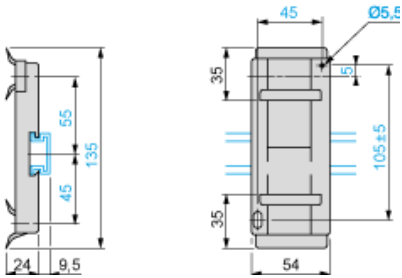
RoHS (date code: YYWW)	Compliant - since 0910 - Schneider Electric declaration of conformity Schneider Electric declaration of conformity
REACH	Reference not containing SVHC above the threshold
California proposition 65	WARNING: Cancer - www.P65Warnings.ca.gov

Contractual warranty

Warranty period	18 months
-----------------	-----------

The information provided in this documentation contains general descriptions and/or technical characteristics of the performance of the products contained herein. This documentation is not intended as a substitute for and is not to be used for determining suitability or reliability of these products for specific user applications. It is the duty of any such user or integrator to perform the appropriate and complete risk analysis, evaluation and testing of the products with respect to the relevant specific application or use thereof. Neither Schneider Electric Industries SAS nor any of its affiliates or subsidiaries shall be responsible or liable for misuse of the information contained herein.

Adapter Plate GK2AF01



X-ON Electronics

Largest Supplier of Electrical and Electronic Components

Click to view similar products for [Contactor Accessories](#) category:

Click to view products by [Schneider](#) manufacturer:

Other Similar products are found below :

[3RT1945-5AP61](#) [SZ-N2SJ](#) [YC9Z-CI6](#) [CA5-22M](#) [EHTK210](#) [MS325-SM1](#) [13222574](#) [SW182B-1](#) [SW190B-24DC-CW4](#) [SZ-CD1](#) [SZ-N8J](#)
[SZ-ZM1E](#) [YC9Z-CNA111SR](#) [YC9Z-CUA422](#) [DPEAN11](#) [3RH1911-1GA40](#) [3RH29111GA22](#) [3RT1924-5AC21](#) [3RT1924-5AK61](#) [3RT1935-](#)
[5AP61](#) [3RT1944-5AC21](#) [3RT1944-5AP61](#) [3RT1945-5AC21](#) [3TY6483-0AK6](#) [CA7-PA-10](#) [CA7-PV-S22](#) [CA7-S9](#) [B88269X2200C101](#)
[CAL5-11](#) [DB25/25A](#) [DB42](#) [DB80](#) [LDC4](#) [SZ-A11](#)